

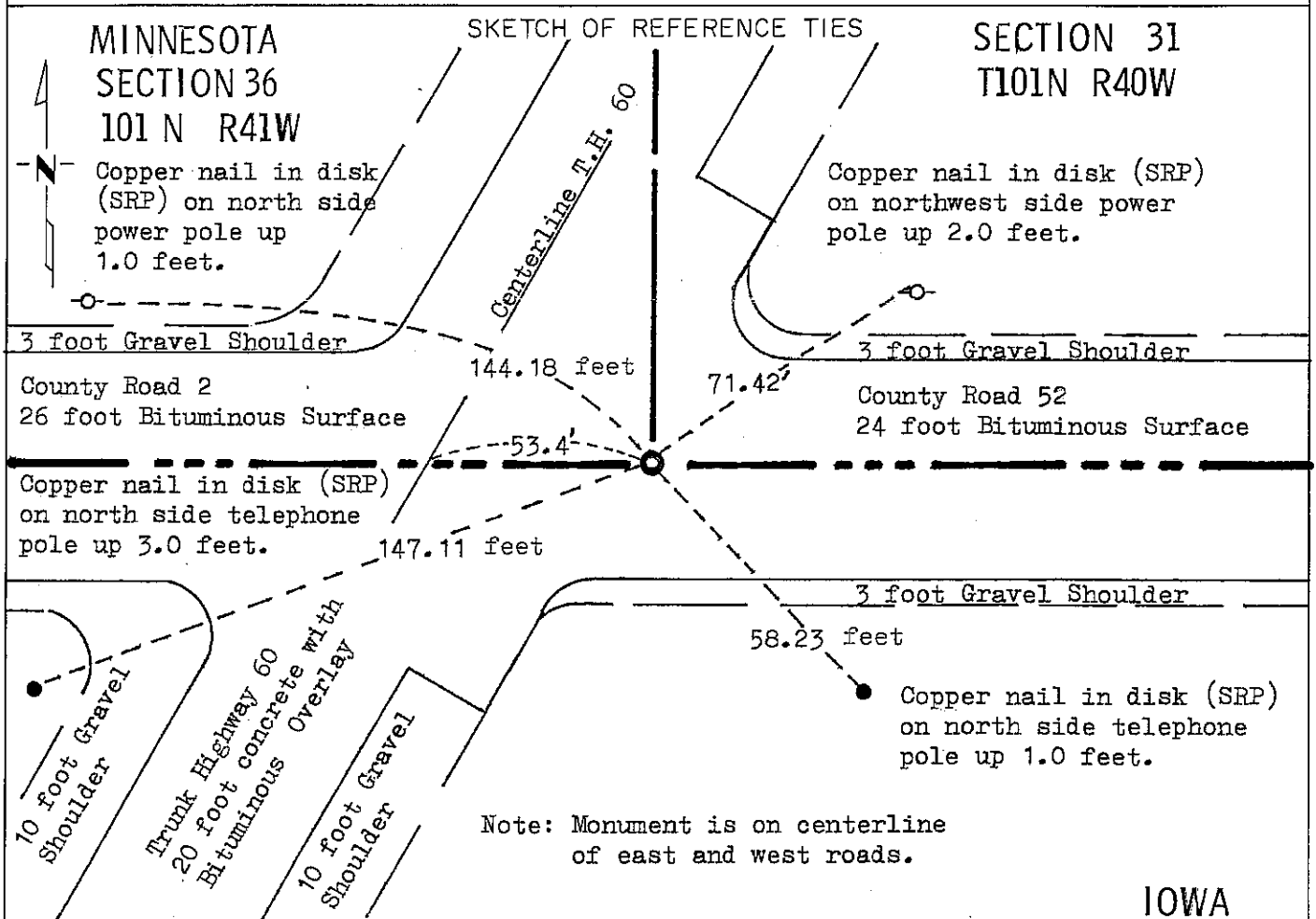
CERTIFICATE OF LOCATION OF GOVERNMENT CORNER

SOUTHEAST Corner of Section 36, Township 101 N, Range 41 W, 5 P.M.

STATE OF MINNESOTA, County of NOBLES

At the corner location shown on the sketch:

- On Aug. 31, 1977 found a 15 inch by 14 inch by 13 inch stone with "+" on it
DATE
down 6.5 feet, nothing below stone.
 left monument as found, lowered monument, removed monument (explain)
- On Aug. 31, 1977 placed a Minnesota Highway Department Cast Iron Monument
DATE
down 0.1 foot.



Statement of evidence relative to this corner location is on back of page.

I hereby certify that this document and the data contained herein was prepared by me or under my direct supervision.

S. Eldon Lober
SIGNATURE

2-4-83
DATE

Registration No. 11933

- Land Surveyor, Professional Engineer
- County Surveyor, County Engineer

OFFICE OF THE COUNTY RECORDER

County of Nobles

I hereby certify that this document was filed in the Co. Recorders office at 4:20 P. M. on the 6th day of September A.D., 1991

County Recorder Jay Howard

By _____, Deputy

DOCUMENT NO. 245397

Statement of Evidence: Southeast Corner 36 T101N R41W 5th P.M.

- Aug. 7, 1852 Andrew Talcott, survey south boundary of Minnesota "Set a post in mound of earth & soil with Trench & Pits as per instructions for corner to sections 31 and 36 between ranges 40 & 41 west of the 5th Meridian. "Surface level wet prairie, Soil first rate and excellent land for grass but to wet and flat to cultivate".
- 1914 Nobles County Highway Department "found stone".
- June 25, 1914 Wm. A. Saxon, county surveyor of Nobles county made a survey on section 31 T101N R40W. Corner to section 31 and 36 is 2652 feet from east quarter corner stone to section 36.
- 1935 Minnesota Highway Department, right of way print. "field stone 2 feet below surface, 53.4 feet east of P.O.T. 0+02.3."
- Aug. 31, 1977 Minnesota Department of Transportation (George Koens) excavated with a tractor backhoe and found stone 15 inches by 14 inches by 13 inches with a chiseled "+" and down 6.5 feet below bituminous road surface, no monument below stone. The location of the stone was perpetuated by placing a Minnesota Highway Department Cast Iron Monument directly over "+" in stone and flush with bituminous surface of road.

The location of the cast iron monument over a stone marked "+" (stone was set prior to 1914) coincide with the original field measurements and occupation lines within adjoining sections. The "+" on the stone is 53.4 feet east of the highway centerline. Therefore, I accept it as the southeast corner to section 36.

For additional information, including field measurements and photographs, contact the Minnesota Department of Transportation in Windom.

Tract 36 Compared da
 Photo da
 Fee nc