

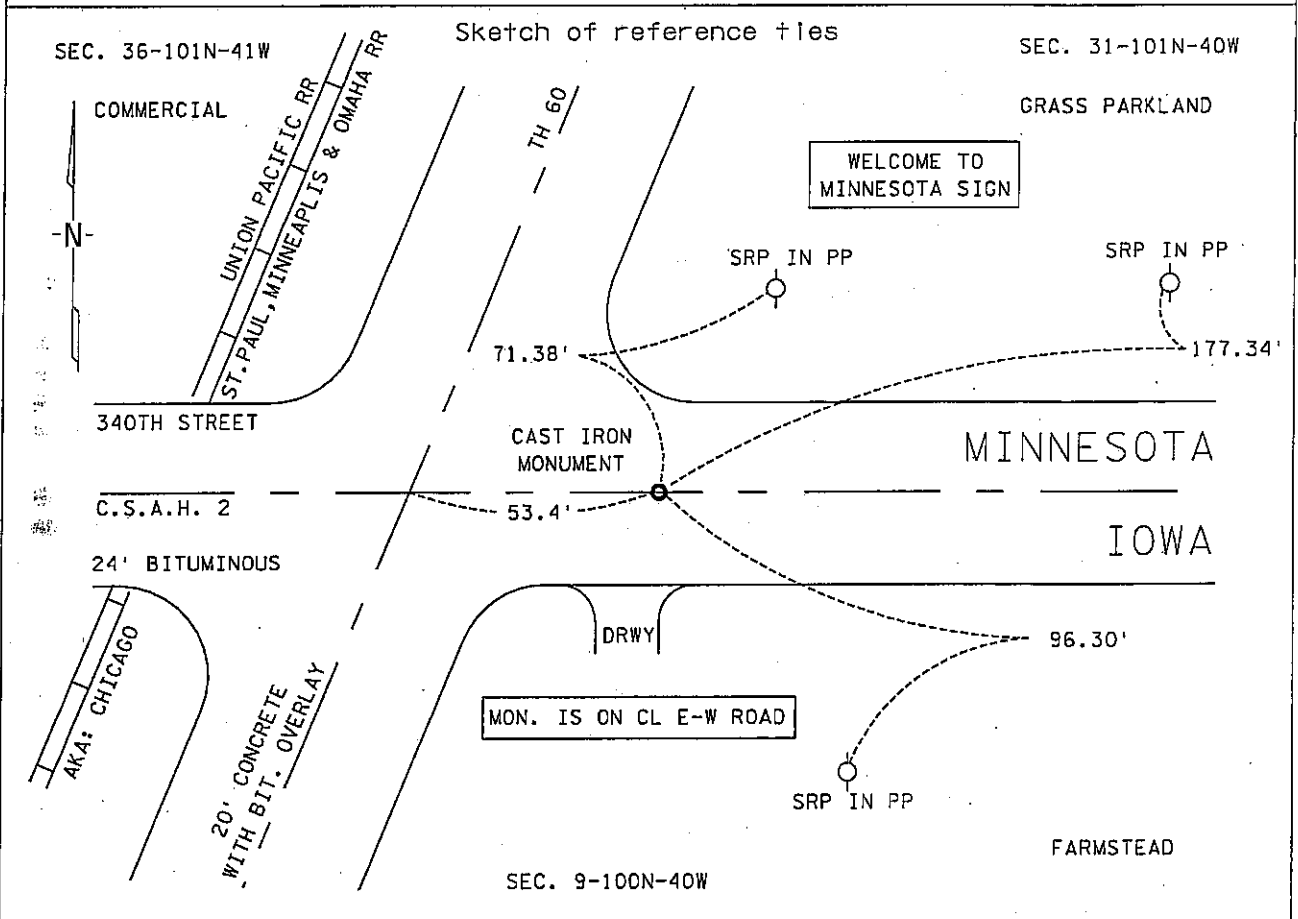
CERTIFICATE OF LOCATION OF GOVERNMENT CORNER

SOUTHEAST Corner of Section 36, Township 101N, Range 41W, 5th P.M.

STATE OF MINNESOTA, County of NOBLES

At the corner location shown on the sketch :

- On 2 JANUARY 2001 found 2" X 2" UNISTRUT WITH MN/DOT CAST IRON CAP,
DOWN 0.5'
 - left monument as found, lowered monument, removed monument (explain)
- On _____ set _____



Statement of evidence relative to this corner location is on back page.

I hereby certify that this document and the data contained herein was prepared by me or under my direct supervision.

[Handwritten Signature]
 Signature _____ Date 29 Nov. 05

Registration No. 22683

Land Surveyor, Professional Engineer
 County Surveyor, County Engineer

OFFICE OF THE COUNTY RECORDER
 County of NOBLES

I hereby certify that this document was filed in the Co. Recorders office at _____ .M. on the day of _____ A.D., 20____

County Recorder _____
 By _____, Deputy

DOCUMENT NO. _____

Statement of Evidence:

SOUTHEAST CORNER
SECTION 36, TOWNSHIP 101 NORTH, RANGE 41 WEST, 5th P.M.
NOBLES COUNTY, MINNESOTA

- 7 Aug. 1852 - Captain Andrew Talcott, Principle Deputy Surveyor, his notes read: "East on South Side of Section 36, Variation 11° 45' East." @ 80.00 chs. "Set a Post in mound of earth & sod with Trench & Pits as per instructions for corner to Sections 31 & 36 between Ranges 40 & 41 West of the 5th Meridian." No ties.
- Circa 1914 - Nobles County Highway Department, Bigelow Twp. Corner Book, states that a stone was in place at the Southwest Corner of Section 31-101-40.
- 25 June 1917 - Nobles County Recorder's Office, Surveyor's Record, Volume B, Page 94, by William A. Saxon, County Surveyor, states that the corner to Section 31 and 36 is 2652 feet from East Quarter Corner stone to Section 36.
- 30 June 1917 - Chicago, St. Paul, Minneapolis & Omaha Railway Company, Right of Way and Track Map, St. Paul to Sioux City, shows the south line of the SE ¼ of Sec. 36-101-41 at station 3498+71.0 which is also the state line.
- Circa 1935 - Minnesota Highway Department, Right of Way Map notes "field stone 2 feet below surface, 53.4 feet east of P.O.T. 0+02.3".
- Circa 1963 - Nobles County Highway Department, Bigelow Twp. Corner Book, states that a brass plug was in place at the Southwest Corner of Section 31-101-40.
- 31 Aug. 1977 - Nobles County Recorder's Office, Document No. 245397, Certificate of Location of Gov't Corner, Southeast Corner, Sec. 36-101-41, by G. Eldon Lober, RLS # 11933, states that a survey crew working on a Monumentation Plat No. 53-M3, excavated with a tractor backhoe and found a 15" X 14" X 13" stone with a chiseled "+" and down 6.5' below bituminous road surface, no monument below stone. A Minnesota Highway Department cast iron monument was placed over the stone.
- 11 Jan. 1978 - Nobles County Recorder's Office, Document No. 201300, the plat of *STATE LINE ADDITION TO BIGELOW, MINNESOTA* by Delbert Rieke, RLS # 5094, which denotes a found Mn/DOT monument at the Southwest Corner of Section 31-101-40.
- 2 Jan. 2001 - Minnesota Department of Transportation, survey crew working on TH 60, SP 5305-51, found the previously identified MHD cast iron monument, down 0.5' for the Southeast Corner of Sec. 36-101-41. Returning in the first week of Dec. 2003 to perform a GPS survey where a distance north of 2646.76' and a distance east of 2644.12' and a distance west of 2652.22' were computed to corresponding quarter section corners.

The written evidence is continuous back to 1914, however there is nothing that connects the stone to the original corner location. The long and continuous history, supported by occupational and collateral evidence suggests that there is no other reasonable location as to the corner and therefore I accept this position. Additional information regarding the preparation of this certificate can be obtained by contacting: Survey Section, Minnesota Department of Transportation, 501 South Victory Drive, Mankato, MN 56001.