

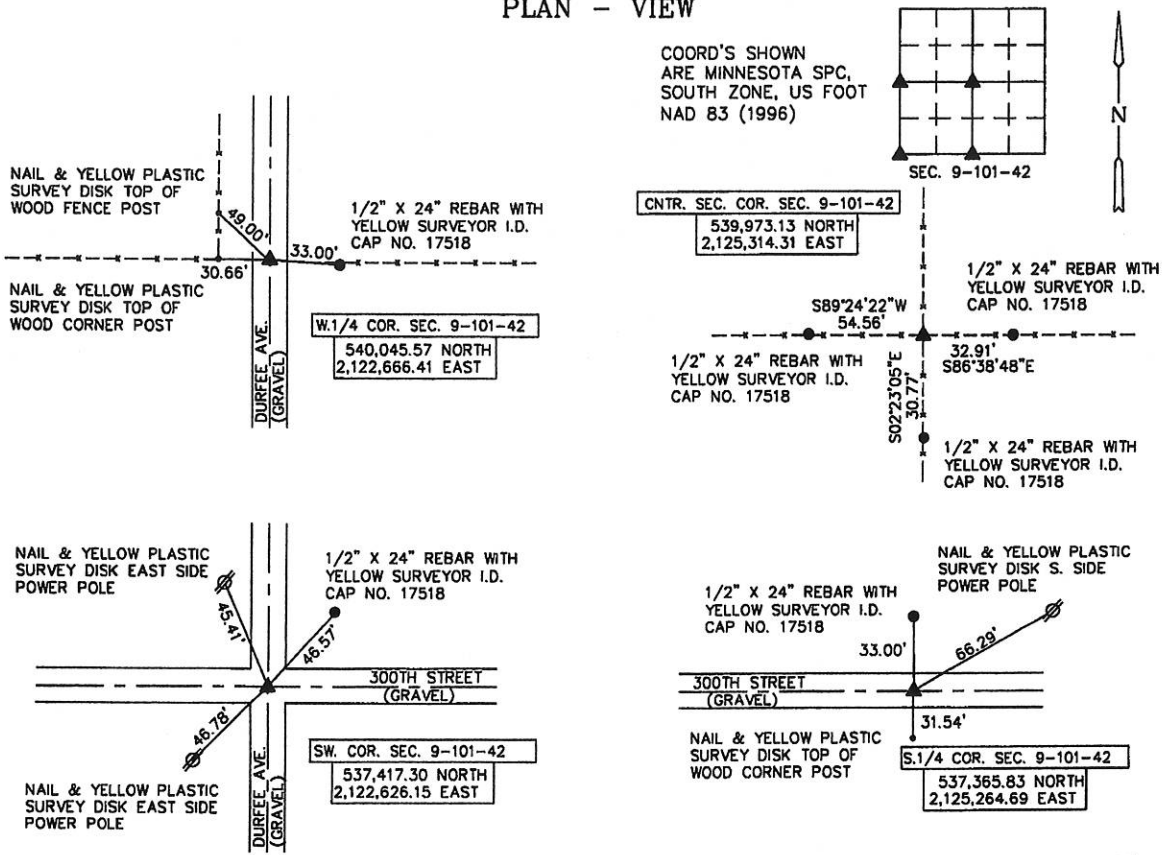
## UNITED STATES PUBLIC LAND SURVEY CORNER CERTIFICATE OF

Land Survey Monuments situated in Section 9, Township 101, Range 42, of the Fifth Principal Meridian, NOBLES County, MINNESOTA.

**Monument Description and Remarks:**

- W.1/4 CORNER—FOUND 60d NAIL WITH PINK WHISKERS IN C.L. GRAVEL (DURFEE AVE), 4" DEEP, IN LINE WITH FENCES WEST AND EAST
- SW CORNER—FOUND 60d NAIL WITH PINK WHISKERS IN C.L.—C.L. OF GRAVEL INTERSECTION OF DURFEE AVE & 300TH ST, 6" DEEP
- S.1/4 CORNER—FOUND 60d NAIL WITH PINK WHISKERS IN C.L. GRAVEL (300TH ST), 4" DEEP, IN LINE WITH FENCES NORTH AND SOUTH
- CNTR. SEC. CORNER—SET 1/2" X 24" REBAR WITH YELLOW SURVEYOR'S I.D. CAP NO. 17518 IN LINE WITH FENCES NORTH, WEST, SOUTH AND EAST

### PLAN - VIEW



I hereby certify that this land surveying document was prepared and the related survey work was performed by me or under my direct personal supervision and that I am a duly licensed Land Surveyor under the laws of the State of Minnesota.

Signature: Kevin D. Jongerius  
 Name typed or printed: KEVIN D. JONGERIUS  
 Date: APRIL 25, 2014 LIC. No. 17518

Corners	List Corners to be Indexed Section	Twp	Range
W.1/4 COR.	9	101	42
SW COR.	9	101	42
S.1/4 COR.	9	101	42
CNTR SEC COR.	9	101	42

