

CERTIFICATE OF LOCATION OF GOVERNMENT CORNER

North Quarter Corner of Section 13, Township 101, Range 42 W, 5th P.M.

STATE OF MINNESOTA, County of Nobles

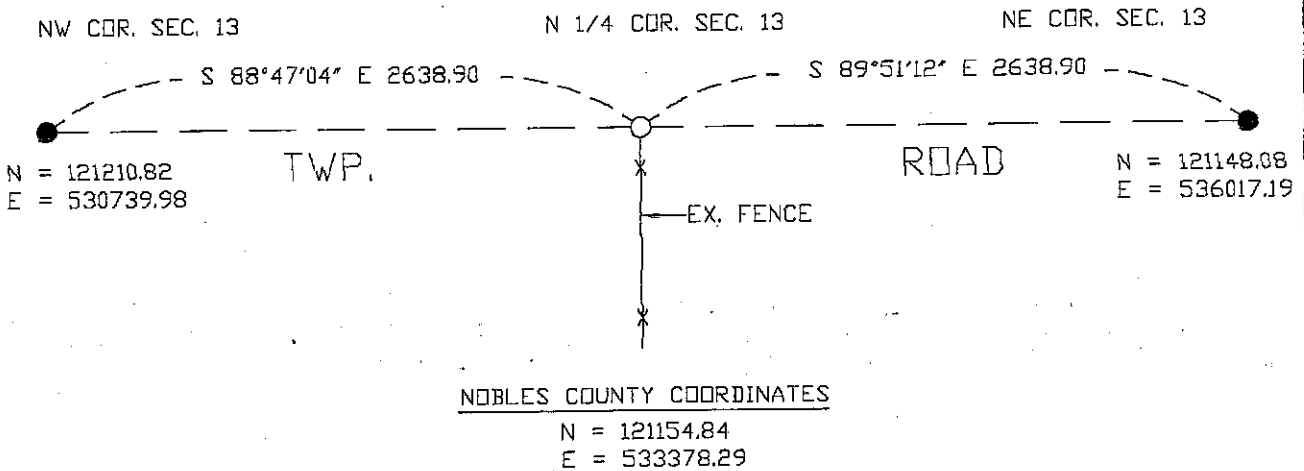
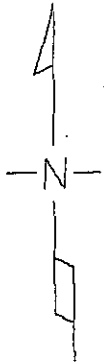
At the corner location shown on the sketch

On 6/24/04 found a Nothing. Dug 8' X 12' X 4' Hole with Backhoe.

left monument as found lowered monument, removed monument (explain)

On 7/13/04 placed a 1" Iron Pipe with survey cap 23008 as shown below at road
and midway between Northwest and Northeast section corners.

SKETCH OF REFERENCE TIES



Statement of evidence relative to this corner location is on back of page.

I hereby certify that this document and the data contained herein was prepared by me or under my direct supervision.

Perry L. Zieske 7-20-04
 SIGNATURE DATE

MN. REGISTRATION NO. 23008

- Land Surveyor, Professional Engineer
 County Surveyor, County Engineer

OFFICE OF THE COUNTY RECORDER

I hereby certify that this document was filed in the Co. Recorder's Office at _____ on the

_____ day of _____

County Recorder _____

By _____, Deputy

DOCUMENT NO. _____