

PREPARED BY: DGR ENGINEERING, 1302 S. UNION STREET, P.O. BOX 511, ROCK RAPIDS, IOWA 51246 (712) 472-2531

UNITED STATES PUBLIC LAND SURVEY CORNER CERTIFICATE OF

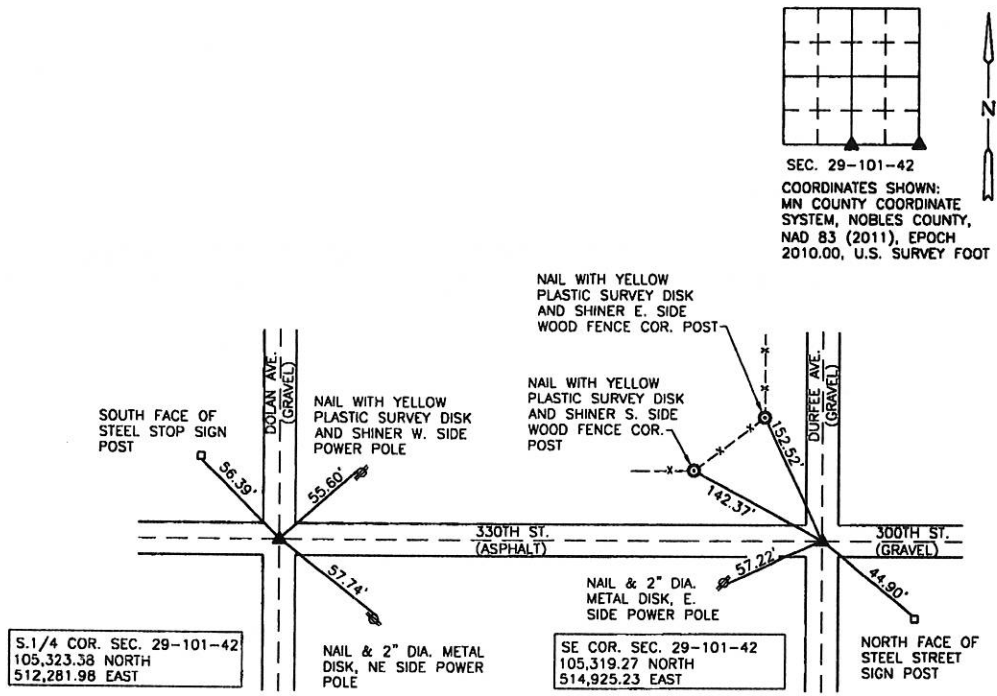
Land Survey Monuments situated in Section 29, Township 101, Range 42, of the Fifth Principal Meridian, NOBLES County, MINNESOTA.

Monument Description and Remarks: NO PREVIOUS RECORDING

S.1/4 CORNER - FOUND 5/8" DIA. REBAR NEAR C.L. ASPHALT ROAD (330TH ST.). MONUMENT PREVIOUSLY USED ON SURVEY IN SE1/4 SECTION 29-101-42 AND MATCHES TIES FROM NOBLES CO. ENGINEER'S OFFICE.

SE CORNER - FOUND 5/8" DIA. REBAR NEAR C.L. ASPHALT ROAD (330TH ST.). MONUMENT PREVIOUSLY USED ON SURVEY IN SE1/4 SECTION 29-101-42 AND MATCHES TIES FROM NOBLES CO. ENGINEER'S OFFICE.

PLAN - VIEW



I hereby certify that this land surveying document was prepared and the related survey work was performed by me or under my direct personal supervision and that I am a duly licensed Land Surveyor under the laws of the State of Minnesota.

Signature: Tim M. Laleman
Name typed or printed: TIM M. LALEMAN
Date: 7-15-2015 LIC. No. 51702



Corners	List Section	Corners to be Indexed Twp	Range
S.1/4 COR.	29	101	42
SE COR.	29	101	42

DOCUMENT NUMBER A 347756
Certified, Filed and or Recorded on
July 20, 2015 9:05 AM

Lynn M. Wilson

NOBLES COUNTY RECORDER
LYNN M. WILSON
507-295-5268
Page: 2