

UNITED STATES PUBLIC LAND SURVEY CORNER CERTIFICATE FOR

Land survey monuments situated in Section 2, Township 101 North, Range 43 West, of the Fifth Principal Meridian, Nobles County, Minnesota..

Previously recorded in N/A in County Recorder's Office.

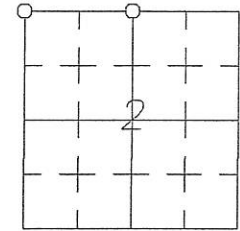
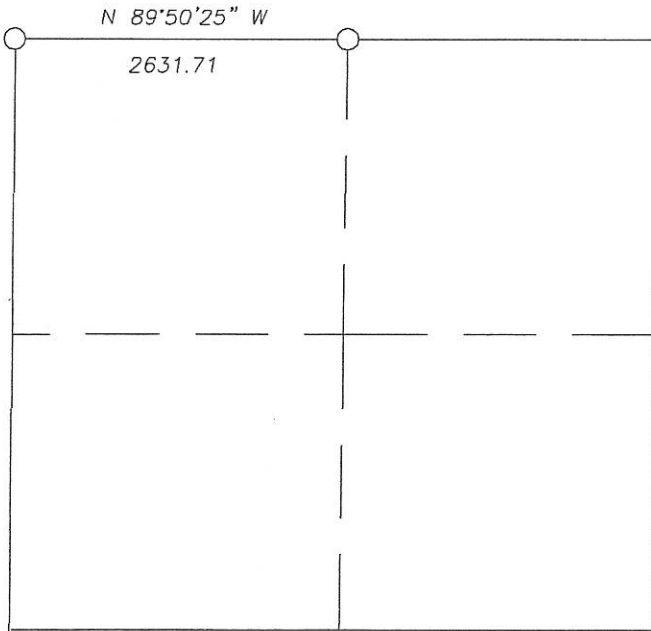
(Show reason for preparing this certificate, the evidence and detailed procedure used in establishing the corner position & monumentation found or placed.)

MONUMENT DESCRIPTION AND REMARKS: On April 5, 2012 we dug for NW corner with backhoe & found a 8" X 8" stone at intersection of Township Road centerline south & east 3.8' deep. I accepted stone as corner & set 5/8" iron stake with survey cap 23008 over top center of stone. County Highway records indicated a stone in 1937 & an iron pin placed. There was no iron pin at this time. We dug for North 1/4 corner with backhoe & found a 5" X 15" limestone 2.7' deep at centerline of Township Road in line with occupation North & South. I accepted stone as corner & set a 5/8" iron stake with survey cap 23008 over top center stone. County Highway records indicated no information for corner.

NOBLES COUNTY COORDINATES NAD 83 (2007) PLAN-VIEW

N = 131747.24
E = 496352.48

N = 131754.58
E = 493720.78



TWP. 101 N., RG. 43 W.



I hereby certify that this land surveying document was prepared and related survey work was performed by me or under my direct supervision and that I am a duly licensed Land Surveyor under the laws of the State of Minnesota.

Perry L. Zieske 4-11-12
Signature Date
Perry Zieske
License number 23008

Corners to be Indexed

Corners	Section	Township	Range
NW	2	101	43
N 1/4	2	101	43

