

UNITED STATES PUBLIC LAND SURVEY CORNER CERTIFICATE OF

Land Survey Monuments situated in Section 27, Township 101, Range 43, of the Fifth Principal Meridian, NOBLES County, Minnesota. Previously recorded in NO PREVIOUS RECORDINGS in County Recorder's Office. (book, page, document number, etc.)

(Show reason for preparing this certificate, the evidence and detailed procedures used in establishing the corner positions and monumentation found or placed.)

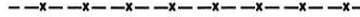
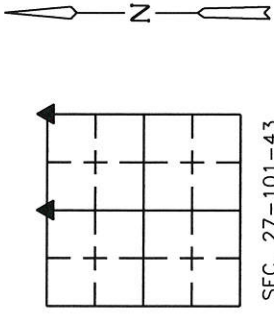
Monument Description and Remarks: FOR SURVEY IN THE NE 1/4 SECTION 27-101-43

NE CORNER - FOUND 1/2" DIA. REBAR NEAR ϕ - ϕ GRAVEL ROADS; 2" BELOW GRAVEL SURFACE. COUNTY ENGINEER'S OFFICE INDICATES A STONE IN 1939, NO TIES.

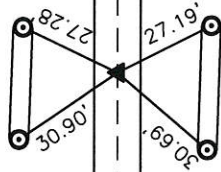
N.1/4 CORNER - SET 1/2" X 24" REBAR WITH YELLOW SURVEYOR'S I.D. CAP NO. 51727 AT ϕ GRAVEL ROAD, INLINE WITH FENCE RUNNING NORTH. COUNTY ENGINEER'S OFFICE RECORDS INDICATE A OAK STAKE IN 1899, NO TIES.

PLAN - VIEW

(Show a minimum of three reference ties to durable physical objects, relevant monuments and physical conditions that will enable recovery of the corner.)

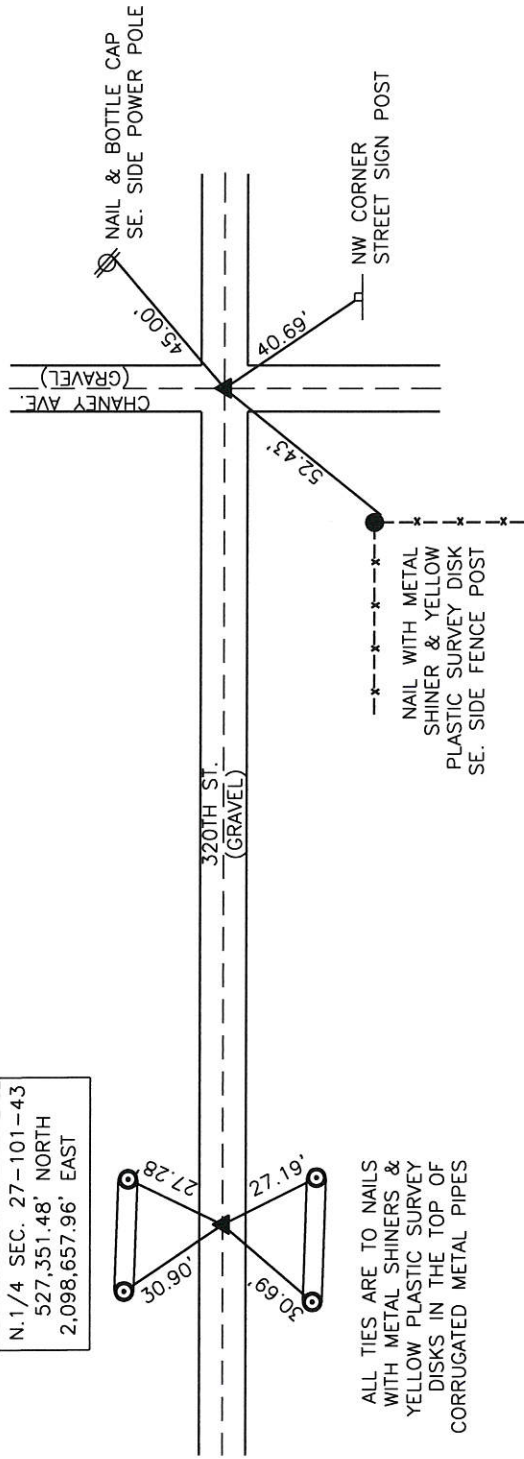


N.1/4 SEC. 27-101-43
527,351.48' NORTH
2,098,657.96' EAST



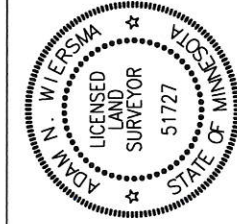
ALL TIES ARE TO NAILS WITH METAL SHINERS & YELLOW PLASTIC SURVEY DISKS IN THE TOP OF CORRUGATED METAL PIPES

NE COR. SEC. 27-101-43
527,270.32' NORTH
2,101,290.22' EAST



COORDINATES LISTED ARE
US STATE PLANE, MINNESOTA SOUTH ZONE,
NAD 83 (2011) EPOCH 2010.00
US SURVEY FOOT

ALL DISTANCES SHOWN ARE HORIZONTAL



I hereby certify that this plan, specification, or report was prepared by me or under my direct supervision and that I am a duly Licensed Land Surveyor under the laws of the State of Minnesota.

By: *Adam Wiersma* 12-28-15 (Date)
Adam N. Wiersma, L.S. License No. 51727
My license renewal date is June 30, 2016

Sheets covered by this seal: THIS SHEET ONLY

| CORNER | SECTION | TWP | RANGE |
|------------|---------|-----|-------|
| NE COR. | 27 | 101 | 43 |
| N.1/4 COR. | 27 | 101 | 43 |