

CERTIFICATE OF LOCATION OF GOVERNMENT CORNER

East Quarter _____ Corner of Section 10 , Township 102 , Range 39W , 5th P.M.

STATE OF MINNESOTA, County of Nobles

At the corner location shown on the sketch

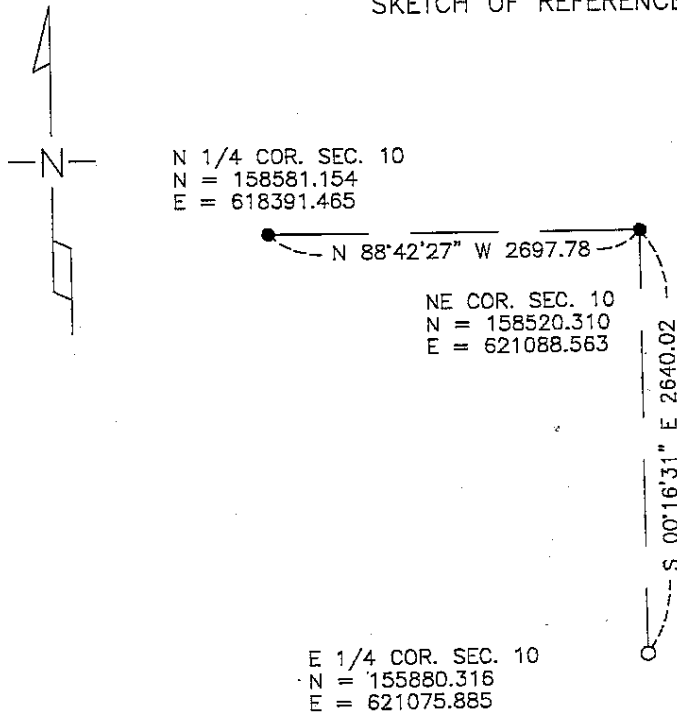
On May 10, 2004 found a 8" X 12" stone 2.1' deep

left monument as found lowered monument, removed monument (explain)

On May 10, 2004 placed a 1" Iron Pipe directly over top center of stone

SKETCH OF REFERENCE TIES

PROJECT COORDINATES



Statement of evidence relative to this corner location is on back of page.

I hereby certify that this document and the data contained herein was prepared by me or under my direct supervision.

Perry L. Zieske 5-13-04
SIGNATURE DATE

MN. REGISTRATION NO. 23008

Land Surveyor, Professional Engineer

County Surveyor, County Engineer

OFFICE OF THE COUNTY RECORDER

I hereby certify that this document was filed in the Co. Recorder's Office at _____ on the

_____ day of _____

County Recorder _____
By _____, Deputy

DOCUMENT NO. _____