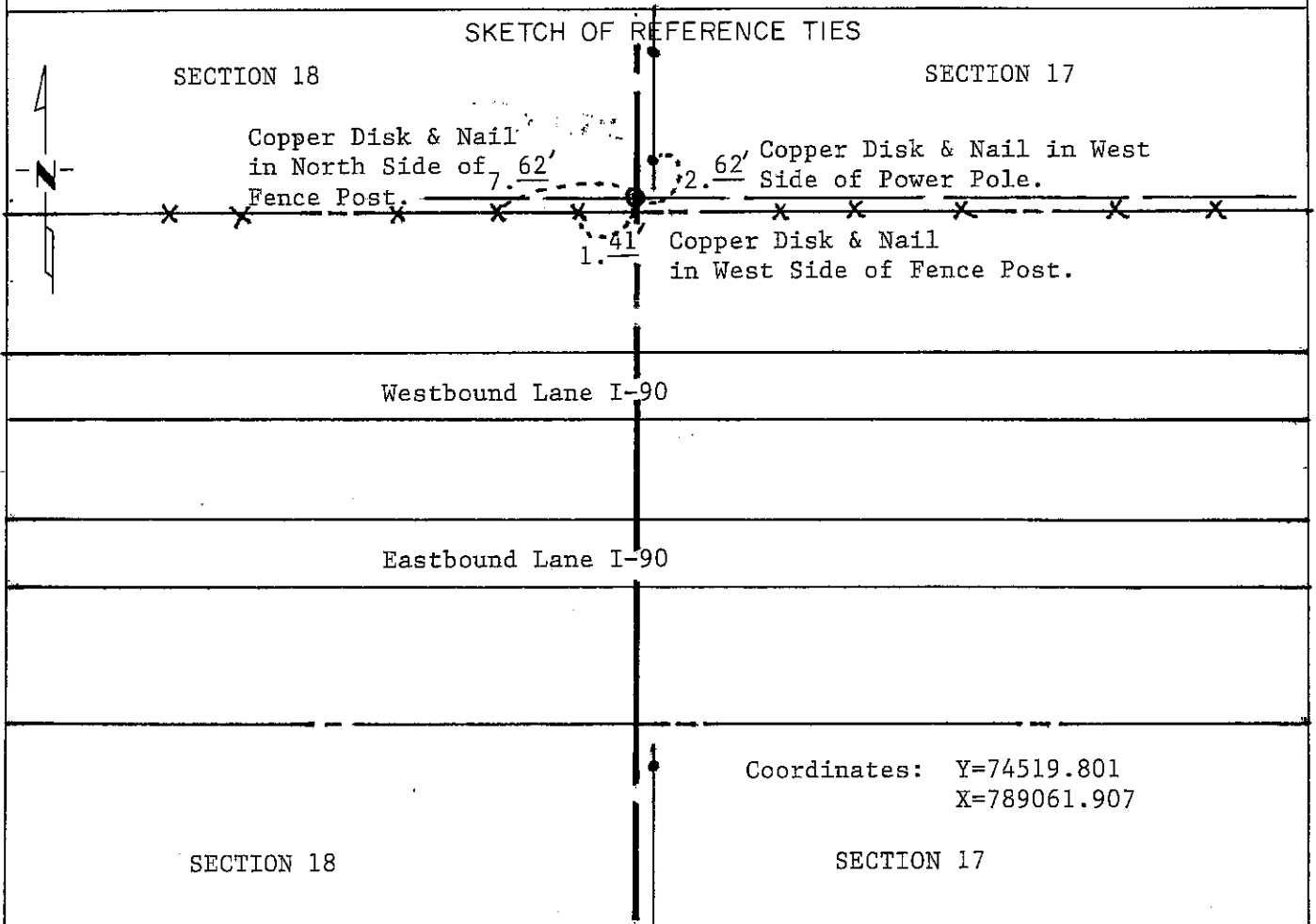


**CERTIFICATE OF LOCATION OF GOVERNMENT CORNER**  
**EAST QUARTER** Corner of Section 18, Township 102N, Range 39W, 5<sup>th</sup> P.M.  
 STATE OF MINNESOTA, County of NOBLES

At the corner location shown on the sketch:

- On Sept. 27, 1989 found a Minnesota Highway Department Cast Iron Monument 0.2 foot  
DATE  
below ground surface  
 left monument as found,  lowered monument,  removed monument (explain)
- On \_\_\_\_\_ placed a \_\_\_\_\_  
DATE



Statement of evidence relative to this corner location is on back of page.

I hereby certify that this document and the data contained herein was prepared by me or under my direct supervision.

Allan E. Schow 1-07-93  
SIGNATURE DATE

Registration No. 11858

Land Surveyor,  Professional Engineer

County Surveyor,  County Engineer

OFFICE OF THE COUNTY RECORDER

County of Nobles

I hereby certify that this document was filed in the Co. Recorders office at 8:55 A. M. on the 20th day of January A.D., 1993

County Recorder James Howard

By \_\_\_\_\_, Deputy

DOCUMENT NO. 250858

Statement of Evidence: East Quarter Corner of Section 18, T102N, R39W, 5th P.M.

- Oct. 23, 1868      The original Public Land Survey was run in 1868 by Deputy Surveyor George G. Howe and his notes read, "Set post in mound with pits for quarter section corner".
- May 11, 1899      Milton S. Smith, Nobles County Surveyor, did a survey in Section 18 at the request of George Griggs. He does not describe monument at quarter corner, but certifies a distance of 2618.4 feet to "original stake and Iron" at center section. There was also a sixteenth corner at equidistance between these corners.
- 1912              Nobles County Highway Department records indicate "Iron pin set in 1912". It was also recovered in 1959. Minnesota Highway Department Cast Iron Monument in 1969.
- Oct. 2, 1969      E. Lober, Minnesota Highway Department survey party chief, states in his notes that the "¼ corner is a Cast Iron Monument placed flush with the ground-with a 3/4" I.P. below". (This was 100 feet left of P.I. Station 2416+29.78, also S.P. 5380-07 field notes show reference ties to concrete witness posts flush with the ground.)
- Sept. 27, 1989    A survey crew with the Minnesota Department of Transportation, found the Minnesota Highway Department Cast Iron Monument 0.2 foot below ground surface.
- Dec. 23, 1992    A Minnesota Department of Transportation survey crew, found the Cast Iron Monument. They established reference ties for the monument for future relocation.

The inplace location of the Minnesota Highway Department Cast Iron Monument set in 1969 is compatible with the occupation lines within the section. An analysis of the Statement of Evidence and the field measurements indicate that the cast iron monument is in a reasonable location. I therefore accept the monument as the perpetuation of the corner location as established in 1969.

For additional information, including field measurements and photographs, contact the Minnesota Department of Transportation in Windom.