

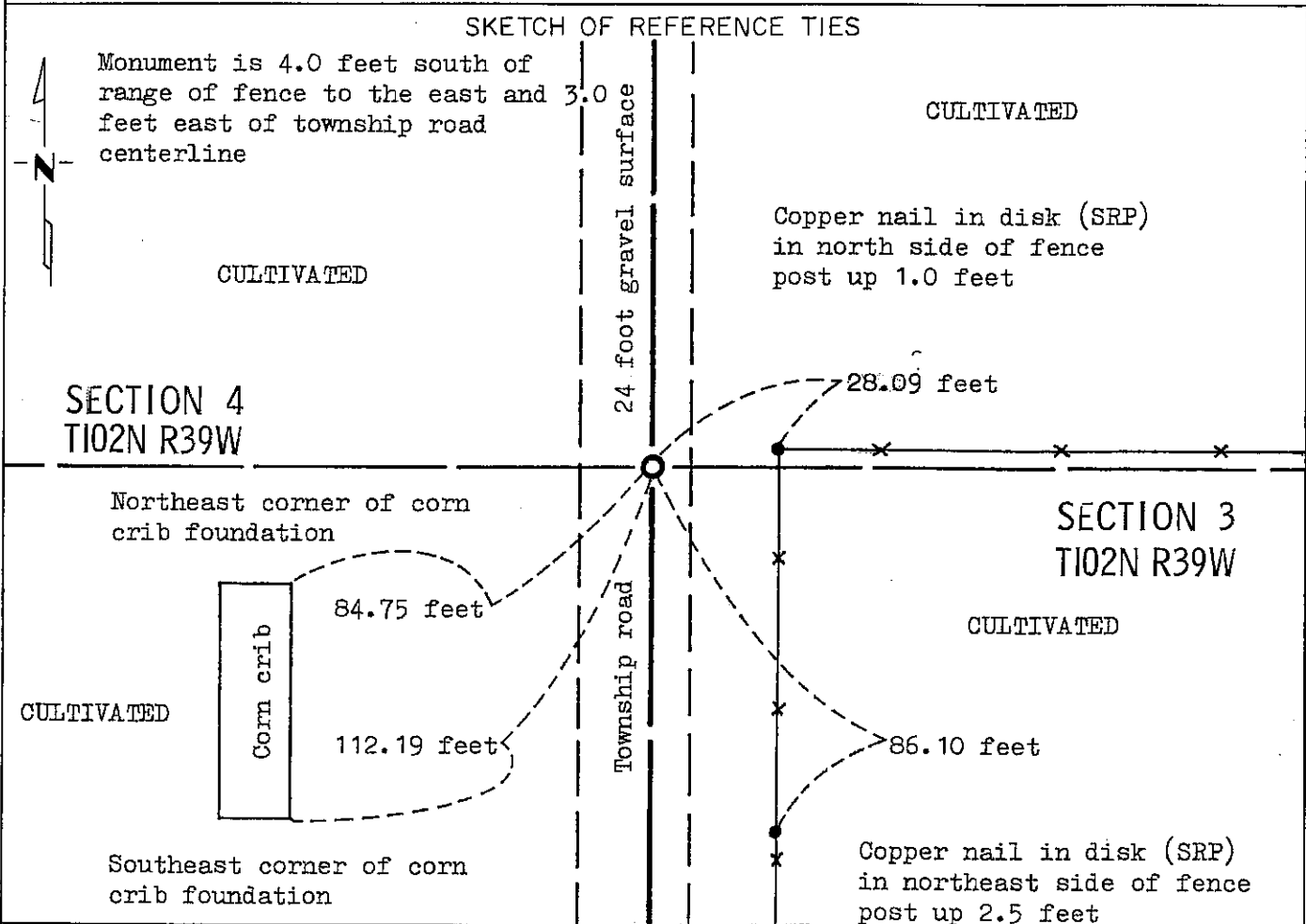
# CERTIFICATE OF LOCATION OF GOVERNMENT CORNER

EAST QUARTER Corner of Section 4, Township 102N, Range 39W, 5 P.M.

STATE OF MINNESOTA, County of NOBLES

At the corner location shown on the sketch:

- On Aug. 17, 1989 found a 16 inch by 14 inch by 9 inch stone with broken surface  
DATE  
on south side. Stone 1.0 foot below gravel surface  
 left monument as found,  lowered monument,  removed monument (explain)
- On Aug. 29, 1989 placed a Minnesota Department of Transportation cast iron  
DATE  
monument 5 inch below gravel surface



Statement of evidence relative to this corner location is on back of page.

I hereby certify that this document and the data contained herein was prepared by me or under my direct supervision.

Allan E. Schorn 3-14-91  
SIGNATURE DATE

Registration No. 11858  
 Land Surveyor,  Professional Engineer  
 County Surveyor,  County Engineer

OFFICE OF THE COUNTY RECORDER  
County of Nobles

I hereby certify that this document was filed in the Co. Recorders office at 4:40 P. .M. on the 6th day of September A.D., 1991

County Recorder James Howard  
By \_\_\_\_\_, Deputy  
DOCUMENT NO. 245401

Statement of Evidence: East Quarter Corner Section 4 T102N R39W 5th P.M.

- Oct. 23, 1868 The original Public Land Survey was run in 1868 by Deputy Surveyor Richard H. L. Jewett, and his notes read: "Set post for  $\frac{1}{4}$  sec. corner in mound with pits".
- June 24, 1896 M. S. Smith, Nobles County Surveyor, states on a survey plat: "E $\frac{1}{4}$  post orig stake in mound".
- 1896 Nobles County Highway Department records show a stake in 1896.
- Oct. 31, 1902 M. S. Smith, Nobles County Surveyor, states on a survey plat: "stone original stake & mound".
- 1902 Nobles County Highway Department records show a stone in 1902.
- Sept. 6, 1912 A plat by William A. Saxon, Nobles County Surveyor, indicates: "found stone".
- 1912 Nobles County Highway Department records show a stone in 1912.
- Aug. 17, 1989 A Minnesota Department of Transportation field survey crew, consisting of R. Busse, K. Janovsky, M. Johnson and G. Menken, searched for the corner using a tractor mounted backhoe. During the course of their excavation, they found a 16 inch by 14 inch by 9 inch stone, broke off on the south side, down about 1 foot below the gravel surface. They lowered the stone and placed a 2 inch square by 27 inch long Minnesota Department of Transportation Public Land Survey Monument down about 5 inches below the gravel road surface directly over the stone.

The above chain of record, dating from the original Public Land Survey corner, indicates that the found stone is a perpetuation of the original Public Land Survey corner.

For additional information, including measurements and photographs, contact the Minnesota Department of Transportation in Windom, Minnesota.

Tract        Compares         
 Photo         
 Fee