

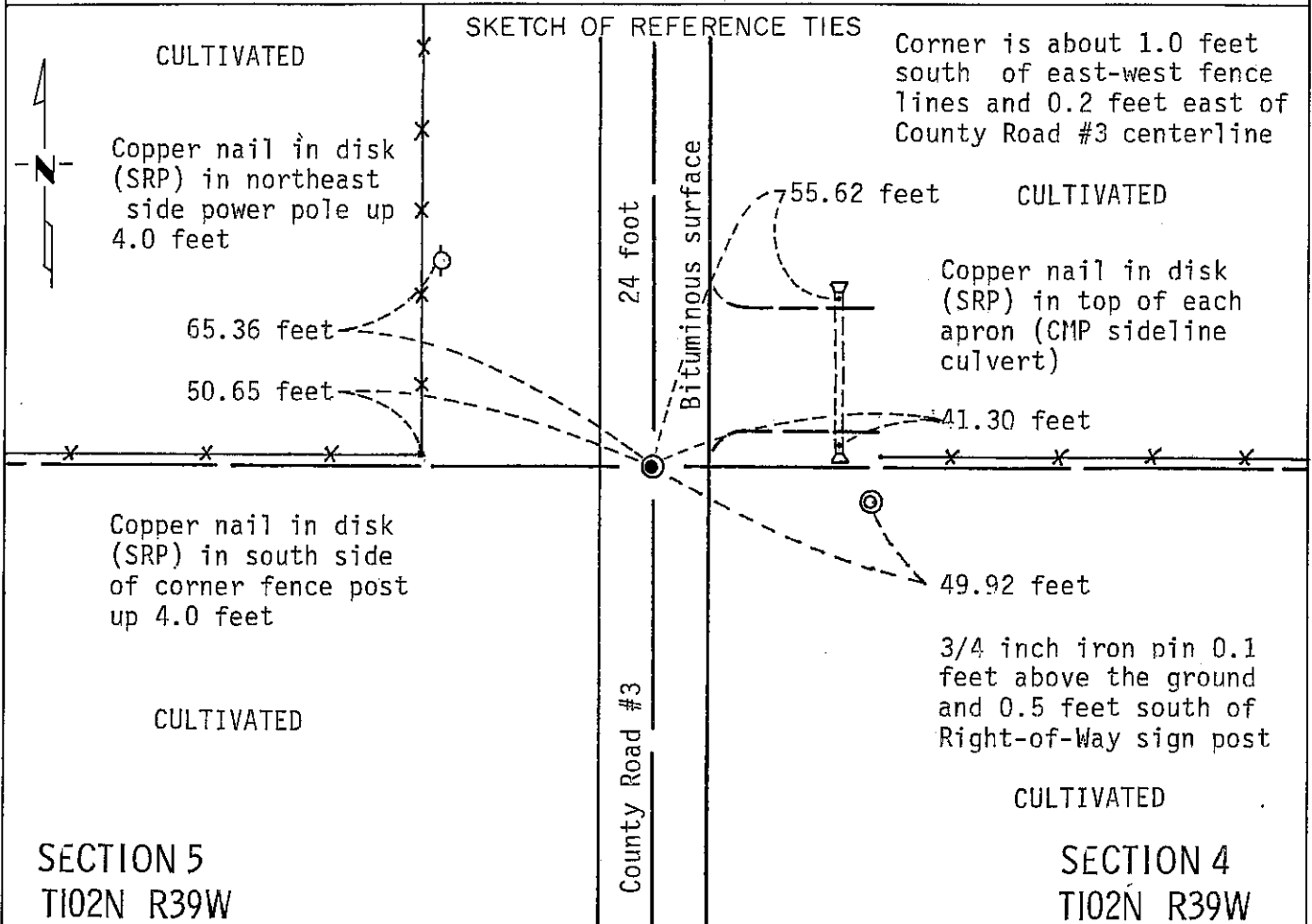
# CERTIFICATE OF LOCATION OF GOVERNMENT CORNER

EAST QUARTER Corner of Section 5, Township 102N, Range 39W, 5 P.M.

STATE OF MINNESOTA, County of NOBLES

At the corner location shown on the sketch:

- On Nov. 7, 1990 found a Bridge spike 1.4 feet below bituminous surface  
(See STATEMENT OF EVIDENCE)
  - left monument as found,  lowered monument,  removed monument (explain)
- On \_\_\_\_\_ placed a \_\_\_\_\_  
DATE



Statement of evidence relative to this corner location is on back of page.

I hereby certify that this document and the data contained herein was prepared by me or under my direct supervision.

Allan E. Schoon 3-11-91  
SIGNATURE DATE

Registration No. 11858

- Land Surveyor,  Professional Engineer
- County Surveyor,  County Engineer

OFFICE OF THE COUNTY RECORDER  
County of Nobles

I hereby certify that this document was filed in the Co. Recorders office at 4:45 P.M. on the 10th day of September A.D., 19 91

County Recorder Jane Howard

By \_\_\_\_\_, Deputy

DOCUMENT NO. 245402

Statement of Evidence: East Quarter Corner of Section 5 T102N R39W 5th P.M.

- Oct. 23, 1868 The original Public Land Survey was run in 1868 by Deputy Surveyor Richard H. L. Jewett, and his notes read: "Set post in mound with pits for  $\frac{1}{4}$  Sec. Corner".
- June 24, 1896 A survey plat by M. S. Smith, Nobles County Surveyor, indicates that he set a stone in a mound to mark the corner.
- 1896 Nobles County Highway Department records show a stone in 1896.
- 1963 Nobles County Highway Department records show a stone in 1963 -- placed a wood stake.
- 1965 Nobles County Highway Department records show a wood stake in 1965 -- placed an iron pin.
- Nov. 7, 1990 A Minnesota Department of Transportation field survey crew, consisting of R. Busse, D. Janke and B. Ostman, found a bridge spike using Nobles County Highway Department records and ties. The bridge spike is about 1 foot south of the east-west fence lines and about 0.2 foot east of the centerline of Nobles County Road #3.

An analysis of old survey records and occupation lines of long standing indicate that the in-place bridge spike is at a reasonable location for the corner.

For additional information, including measurements and photographs, contact the Minnesota Department of Transportation in Windom, Minnesota.

Tract 102N 39W 5th P.M. Compared dm  
 Photo 102N 39W 5th P.M.  
 Fee 200