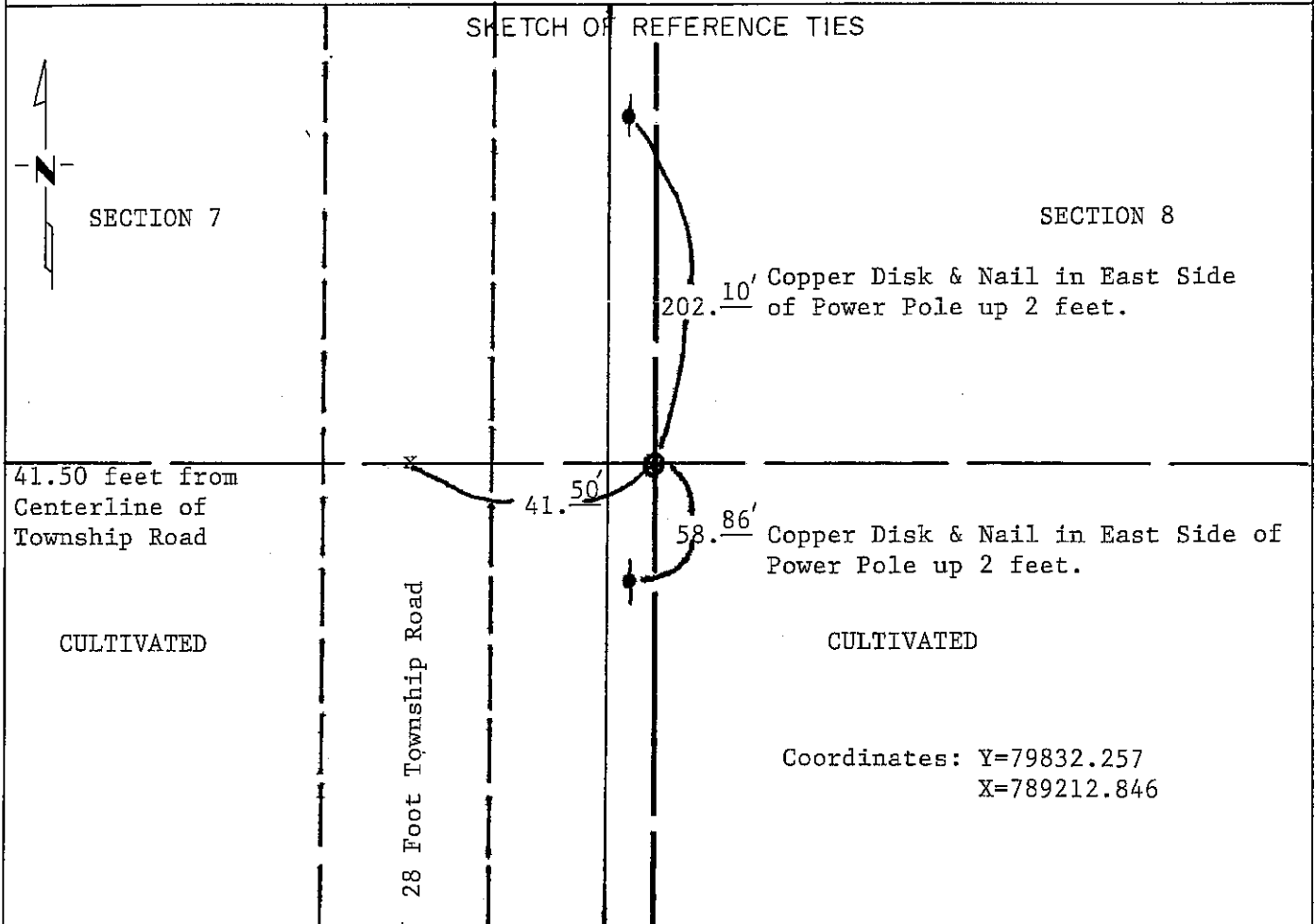


**CERTIFICATE OF LOCATION OF GOVERNMENT CORNER**  
**EAST QUARTER** Corner of Section 7, Township 102N, Range 39W, 5<sup>th</sup> P.M.  
 STATE OF MINNESOTA, County of NOBLES

At the corner location shown on the sketch:

- On \_\_\_\_\_ found a \_\_\_\_\_  
DATE
- left monument as found,  lowered monument,  removed monument (explain)
- On Dec. 21, 1992 placed a Minnesota Department of Transportation Cast Iron  
DATE  
Monument 2 feet below dirt field surface.



Statement of evidence relative to this corner location is on back of page.

I hereby certify that this document and the data contained herein was prepared by me or under my direct supervision.

Allen E. Schorn 1-07-93  
SIGNATURE DATE

Registration No. 11858

- Land Surveyor,  Professional Engineer  
 County Surveyor,  County Engineer

OFFICE OF THE COUNTY RECORDER  
 County of Nobles

I hereby certify that this document was filed in the Co. Recorders office at 8:45 A .M. on the 20th day of January A.D., 1993

County Recorder James Howard

By \_\_\_\_\_, Deputy

DOCUMENT NO. 250856

Statement of Evidence: East Quarter Corner of Section 7, T102N, R39W, 5th P.M.

- Oct. 23, 1868 The original Public Land Survey was run in 1868 by Deputy Surveyor George G. Howe and his notes read, "Set Post in mound with pits for  $\frac{1}{4}$  section corner".
- Oct. 17, 1989 A Minnesota Department of Transportation survey crew consisting of Roger Busse, Terry Knoll and Terry Makovsky, dug near the lost location a hole 12 feet north by 8 feet south by 4 feet west by 7 feet east of the lost location site with a depth of  $3\frac{1}{2}$  feet to 4 feet. They found no evidence of the corner.
- Oct. 18, 1989 A Minnesota Department of Transportation survey crew consisting of Roger Busse, Mike Murphy, Marcia Johnson and Terry Makovsky dug a hole  $5\frac{1}{2}$  feet south,  $3\frac{1}{2}$  feet north,  $3\frac{1}{2}$  feet west and  $8\frac{1}{2}$  feet east of possible occupation line. They found 3 stones in scattered locations on the west side of the hole just beneath the surface. No record of a rock being placed at this corner. Found no other evidence of the corner.
- Dec. 21, 1992 A Minnesota Department of Transportation survey crew consisting of Deni Ernst, Mike Murphy, Deni Janke and Terry Makovsky, dug a hole at the lost location site 4 feet west by 14 feet west by 10 feet north and 10 feet south. They found no evidence of the corner. They placed a Minnesota Department of Transportation Cast Iron Monument at the lost location site.

The lack of record and field evidence indicates that this corner be set by lost methods, midway and on line between section corners.

For additional information, including measurements and photographs, contact the Minnesota Department of Transportation in Windom.