

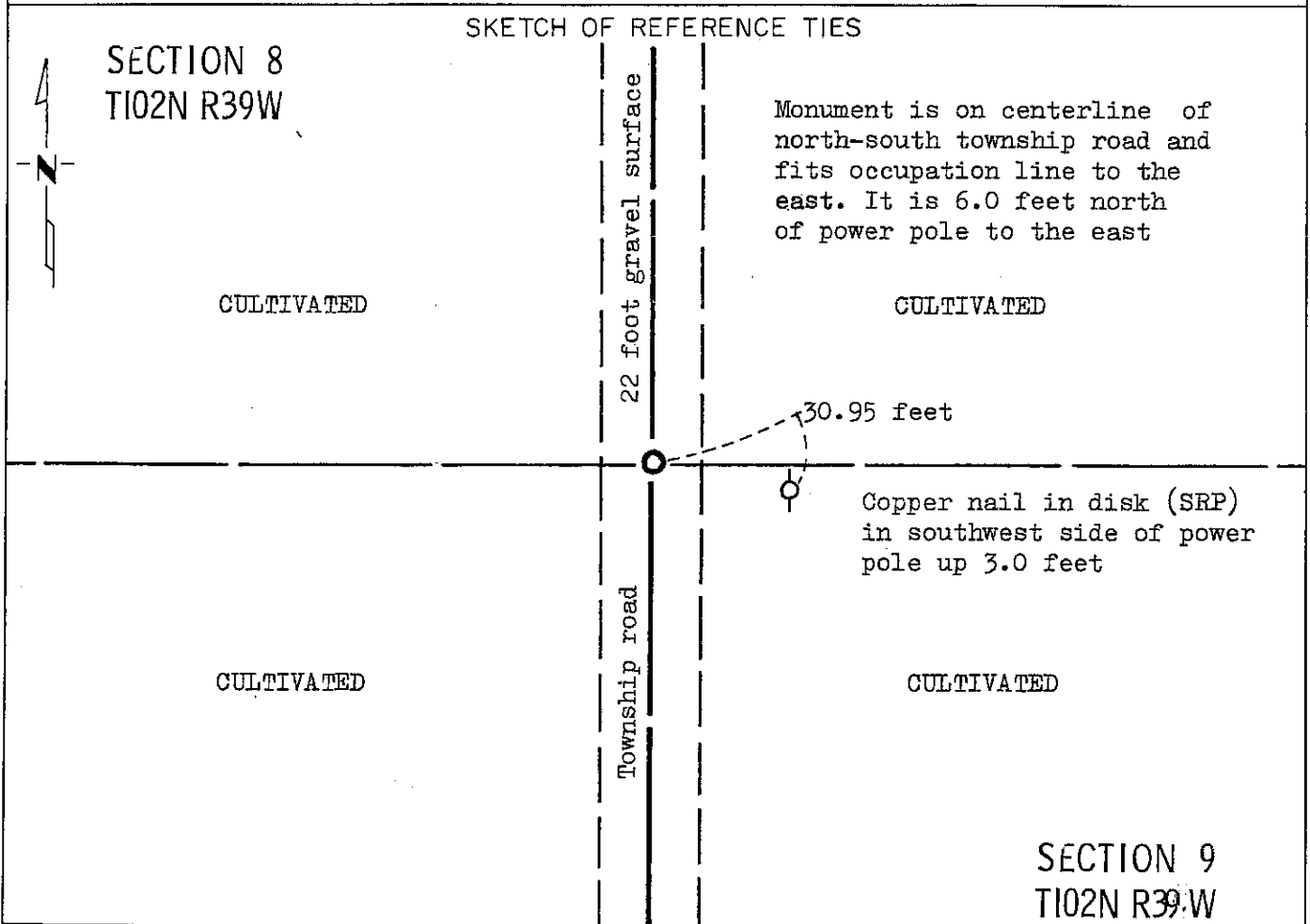
CERTIFICATE OF LOCATION OF GOVERNMENT CORNER

EAST QUARTER Corner of Section 8, Township 102N, Range 39W, 5 P.M.

STATE OF MINNESOTA, County of NOBLES

At the corner location shown on the sketch:

- On Aug. 18, 1989 found a 8 inch by 15 inch by 12 inch stone 2.9 feet below gravel surface (See statement of evidence)
DATE
 left monument as found, lowered monument, removed monument (explain)
- On Aug. 18, 1989 placed a Minnesota Department of Transportation cast iron monument 0.5 feet below gravel surface
DATE



Statement of evidence relative to this corner location is on back of page.

I hereby certify that this document and the data contained herein was prepared by me or under my direct supervision.

Allan E. Schorn 3-11-91
SIGNATURE DATE

Registration No. 11858

- Land Surveyor, Professional Engineer
- County Surveyor, County Engineer

OFFICE OF THE COUNTY RECORDER

County of Nobles

I hereby certify that this document was filed in the Co. Recorders office at 8:10 A. M. on the 11th day of September A.D., 1991

County Recorder Joyce Howard

By _____, Deputy

DOCUMENT NO. 245424

Statement of Evidence: East Quarter Corner Section 8 T102N R39W 5th P.M.

- Oct. 22, 1868 The original Public Land Survey was run in 1868 by Deputy Surveyor George G. Howe and his notes read: "Set post in mound with pits for $\frac{1}{4}$ section corner".
- June 13, 1934 Gebo, a Minnesota Highway Department field crew chief, found a grey granite rock with a flattened top and circular about 8 inches in diameter and 7 inches below the ground. He used the center of the rock as the corner location.
- 1935 Nobles County Highway Department records show a stone in 1935.
- 1964 Nobles County Highway Department records show a stone in 1964 -- placed a wood stake.
- Aug. 18, 1989 A Minnesota Department of Transportation field survey crew, consisting of R. Busse, K. Janovsky, M. Johnson and G. Menken, searched for the corner using a tractor mounted backhoe. During the course of their excavation, they found a 2 inch by 2 inch by 18 inch wood stake with a $\frac{3}{8}$ inch diameter rebar in the center over a 8 inch by 15 inch by 12 inch stone down 2.9 feet below the gravel surface. They removed the wood stake to accommodate a Minnesota Department of Transportation Public Land Survey Monument which was placed 0.5 foot below the gravel surface and directly over the stone.

The origin of the stone could not be determined, but an analysis of old survey records and occupation lines of long standing indicate that the in-place stone is at a reasonable location for the corner.

For additional information, including measurements and photographs, contact the Minnesota Department of Transportation in Windom, Minnesota.