

CERTIFICATE OF LOCATION OF GOVERNMENT CORNER

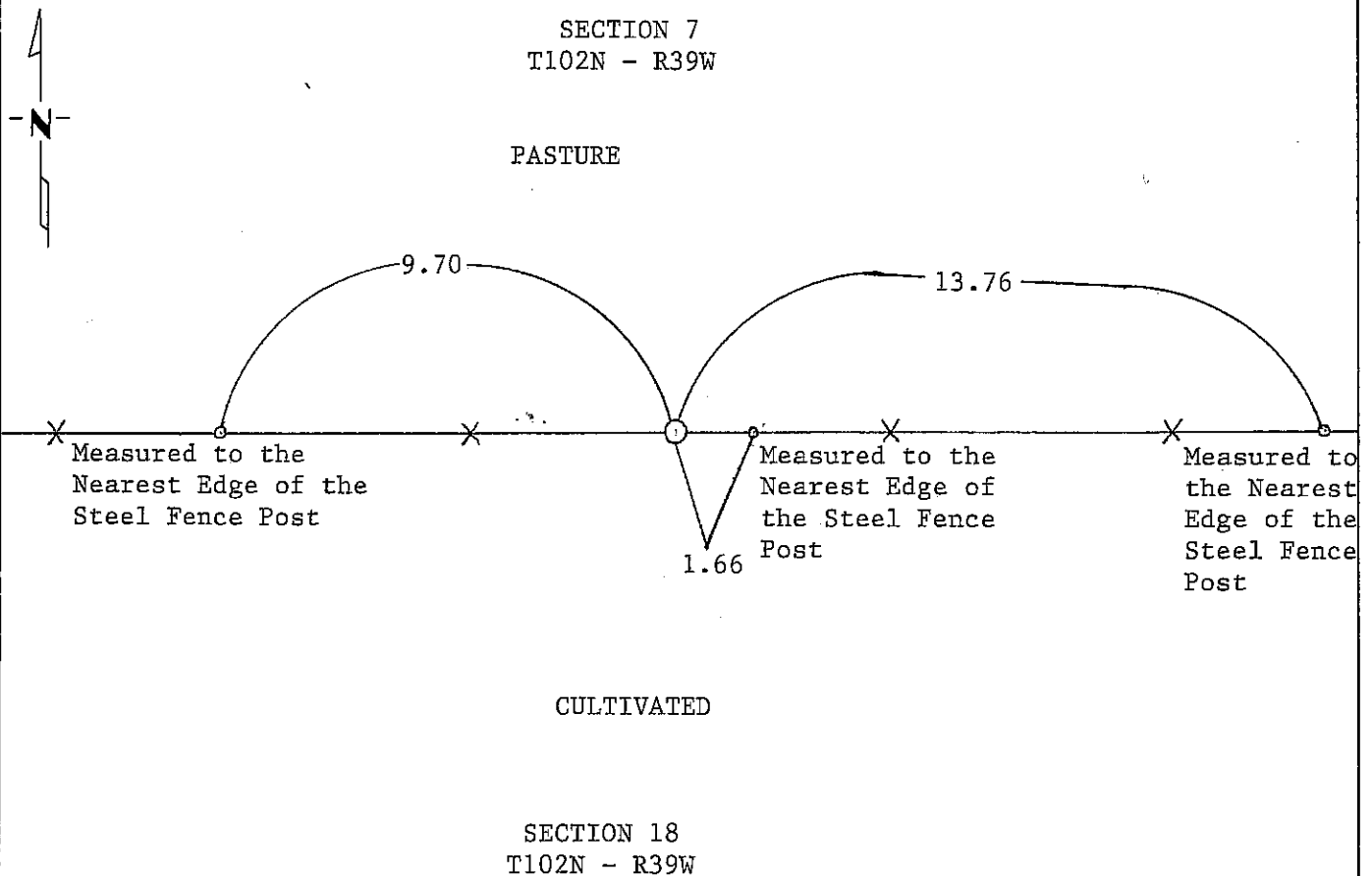
NORTH QUARTER Corner of Section 18, Township 102N, Range 39W, 5 P.M.

STATE OF MINNESOTA, County of NOBLES

At the corner location shown on the sketch:

- On _____ found a _____
DATE
- left monument as found, lowered monument, removed monument (explain)
- On 3-18-1992 placed a Square Tube (Unistrut) with a MN/DOT PLS Cap Flush
DATE

SKETCH OF REFERENCE TIES



Statement of evidence relative to this corner location is on back of page.

I hereby certify that this document and the data contained herein was prepared by me or under my direct supervision.

Allan E. Schoon 10-1-92
SIGNATURE DATE

Registration No. 11858

- Land Surveyor, Professional Engineer
- County Surveyor, County Engineer

OFFICE OF THE COUNTY RECORDER

County of Nobles

I hereby certify that this document was filed in the Co. Recorders office at 8:40 A.M. on the 21st day of October A.D., 1992

County Recorder Jay Howard

By _____, Deputy

DOCUMENT NO. 249751

Statement of Evidence: North Quarter Corner of Section 18, T102N, R39W, 5th P.M.

- Oct. 23, 1868 The original Public Land Survey was run in 1868 by Deputy Surveyor G. G. Howe and his notes read, "Set post in mound with pits for $\frac{1}{2}$ section corner".
- 1896 Nobles County Highway Department Records indicate "iron pin".
- 1912 Nobles County Highway Department Records indicate "stone".
- Oct. 23, 1912 Wm. A. Saxon, Nobles County Surveyor, notes indicate he "Set Stone".
- Oct. 30, 1912 Wm. A. Saxon, Nobles County Surveyor, indicates on his plat a "stone" at the quarter corner.
- June 19, 1934 Gebo, with the Minnesota Highway Department, and survey crew "Assumed Corner." Used fence corner - no evidence of monument.
- 1953 Nobles County Highway Records indicate "stone" in 1953.
- Feb. 24, 1978 Foster and Tessmer, with the Minnesota Highway Department, notes read, "Site of corner not accessible at this time because of deep snow".
- Oct. 30, 1989 Roger Busse, Rose Katke, Dan Flatgard and Terry Makovsky, of the Minnesota Department of Transportation, looked for the corner with a backhoe. They found no evidence of a stone. No reading with a magnetic locator. Dug $2\frac{1}{2}$ feet deep hole from fence to 5 feet North of fence and 15 feet East and 12 feet West of Lost Location.
- Oct. 31, 1989 Roger Busse, Dan Flatgard and Terry Makovsky, of the Minnesota Department of Transportation, looked for the corner using a backhoe. No evidence of stone and no reading with locator. Dug $2\frac{1}{2}$ feet deep hole from fence to 6 feet South of fence and 12 feet East and 11 feet West of Lost Location. Also dug hole 3 feet deep by 5 feet by 9 feet at Lost Location. Nothing found in these areas. Lost Location figured from Northeast Corner of Section 18-102-39.
- Mar. 18, 1992 John Brommer, Brian Ostman, Dennis Janke and Thomas Boser, of the Minnesota Department of Transportation, used lost location methods to set this corner. They placed a square tube (Unistrut) with a Minnesota Department of Transportation Public Land Survey Cap flush with the ground. The lack of record and field evidence indicates that this corner be set by lost methods, by double proportionate measurements from found corners.

For additional information, including field measurements and photographs, contact the Minnesota Department of Transportation in Windom.