

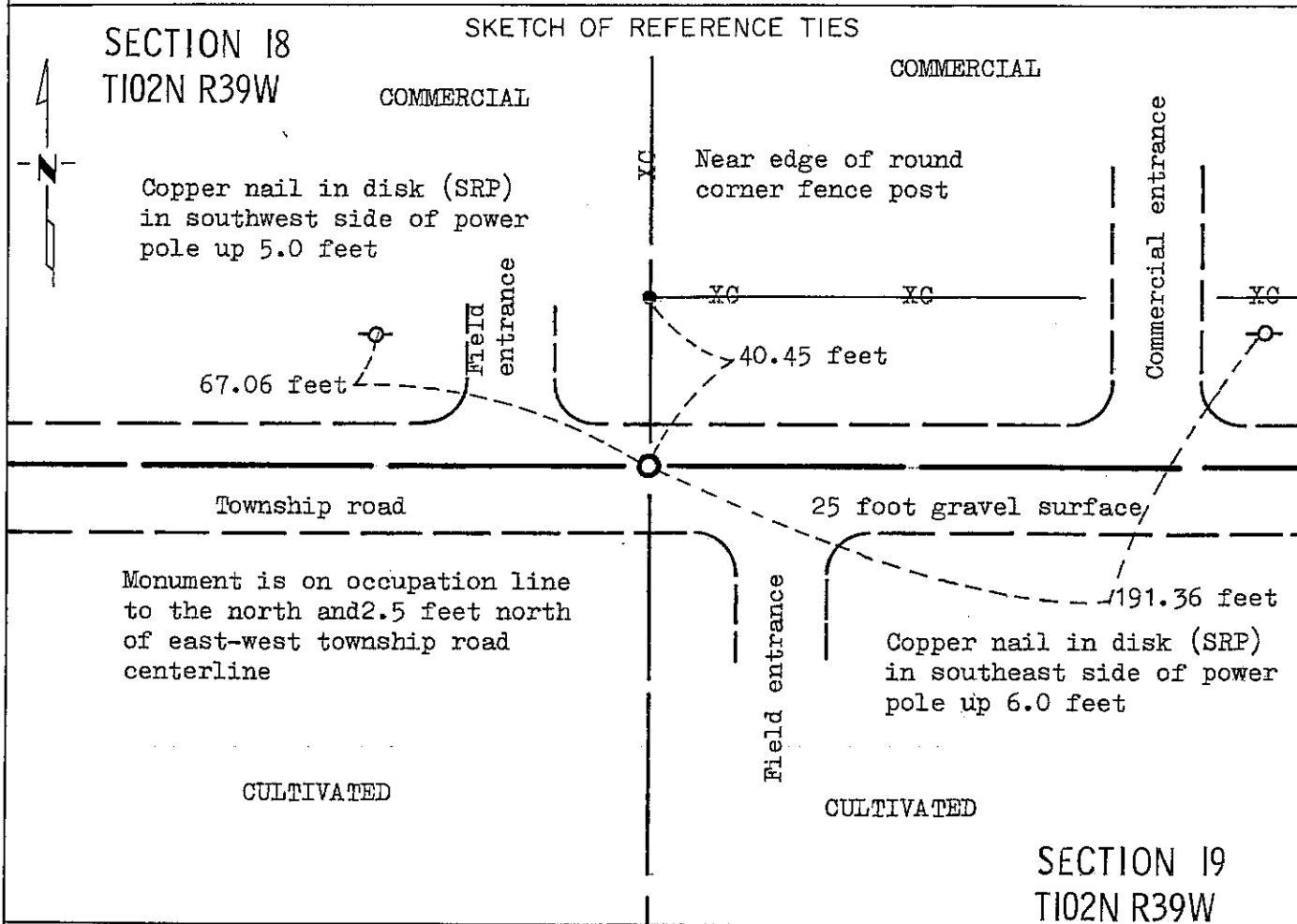
# CERTIFICATE OF LOCATION OF GOVERNMENT CORNER

NORTH QUARTER Corner of Section 19, Township T102N, Range R39W, 5 P.M.

STATE OF MINNESOTA, County of NOBLES

At the corner location shown on the sketch:

- On Oct. 13, 1989 found a 18 inch by 12 inch by 11 inch stone in an upright  
DATE  
position 18 inches below gravel surface (See statement of evidence)  
 left monument as found,  lowered monument,  removed monument (explain)
- On Oct. 13, 1989 placed a Minnesota Department of Transportation cast iron  
DATE  
monument 0.5 feet below gravel surface



Statement of evidence relative to this corner location is on back of page.

I hereby certify that this document and the data contained herein was prepared by me or under my direct supervision.

Allan E. Schorn 3-11-91  
SIGNATURE DATE

Registration No. 11858

- Land Surveyor,  Professional Engineer
- County Surveyor,  County Engineer

OFFICE OF THE COUNTY RECORDER

County of Nobles

I hereby certify that this document was filed in the Co. Recorders office at 8:35 A.M. on the 11th day of September A.D., 1991

County Recorder Joseph Howard

By \_\_\_\_\_, Deputy

DOCUMENT NO. 245429

Statement of Evidence: North Quarter Corner Section 19 T102N R39W 5th P.M.

- Oct. 22, 1868 The original Public Land Survey was run in 1868 by Deputy Surveyor Richard H. L. Jewett, and his notes read: "Set post in mound with pits for  $\frac{1}{4}$  sec. cor."
- 1896 Nobles County Highway Department records show a stone in 1896.
- 1899 Nobles County Highway Department records show an iron pin in 1899.
- May 11, 1899 M. S. Smith, Nobles County Surveyor, made a survey of part of Section 18 at the request of George Griggs. He certified on a plat of said survey that there is a 2 inch iron bolt at the South Quarter Corner. The quarter corner is 2604.6 feet from the stone at the section corner east and 1302.3 feet west of a stone monument at the 1/16 line.
- 1912 Nobles County Highway Department records show an iron pin in 1918 -- set a stone.
- Aug. 22, 1918 A plat by William A. Saxon, Nobles County Surveyor, reads: "iron and stone set".
- 1959 Nobles County Highway Department records show a stone in 1959 -- placed a wood stake.
- Feb. 27, 1978 R. Foster and D. Tessmer, Minnesota Department of Transportation Technicians found a 5/8 inch rebar down 0.2 feet near the centerline of an east-west road and on line with a north-south fence.
- Oct. 13, 1989 A Minnesota Department of Transportation field survey crew, consisting of R. Busse, R. Katke, M. Kruger and T. Makovsky, searched for the corner using a tractor mounted backhoe. They found a 5/8 inch diameter by 14 inch long rebar 0.3 feet below the gravel surface which was over an 18 inch by 12 inch by 11 inch rounded stone in an upright position 18 inches below the gravel surface, and the stone was directly over a 2 inch diameter by 24 inch long iron rod approximately 37 inches below the gravel surface. They removed the 5/8 inch diameter rebar and lowered the iron rod and stone to place a Minnesota Department of Transportation Public Land Survey Monument directly over the 2 inch diameter iron rod.

The found rebar, stone and iron rod are a perpetuation of the corner beginning with the survey of M. S. Smith, Nobles County Surveyor, in 1899. An analysis of old survey records and occupation lines of long standing indicate that the in place stone and iron rod are at a reasonable location for the corner.

For additional information, including measurements and photographs, contact the Minnesota Department of Transportation in Windom, Minnesota.

Tract 19 Compared dm  
 Photo MS  
 Fee RC