

255697

CERTIFICATE OF LOCATION OF GOVERNMENT CORNER

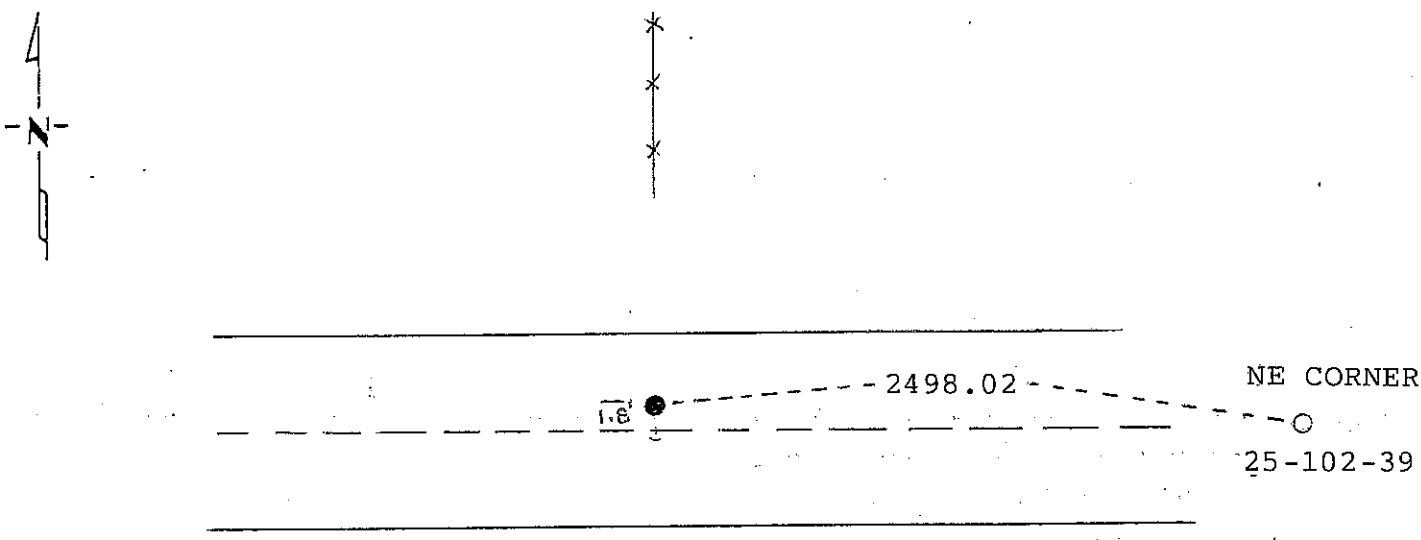
NORTH 1/4 Corner of Section 25, Township 102 N, Range 39 W, 5th P.M.

STATE OF MINNESOTA, County of NOBLES

At the corner location shown on the sketch:

- On _____ found a _____
DATE
- left monument as found, lowered monument, removed monument (explain)
- On 1/10/94 placed a CONCRETE NAIL 1.8 FEET NORTH OF CENTERLINE
DATE IN LINE WITH FENCE TO NORTH ACCORDING TO 1931 HIGHWAY

SKETCH OF REFERENCE TIES PLANS



Statement of evidence relative to this corner location is on back of page.

I hereby certify that this document and the data contained herein was prepared by me or under my direct supervision.

Steven B. Kor 1/28/94
SIGNATURE DATE

Registration No. 22461

- Land Surveyor, Professional Engineer
- County Surveyor, County Engineer

OFFICE OF THE COUNTY RECORDER
County of Nobles

I hereby certify that this document was filed in the Co. Recorders office at 9:05 A.M. on the 7th day of April, A.D., 1994

County Recorder James Howard

By _____, Deputy

DOCUMENT NO. 255697

Photo _____