

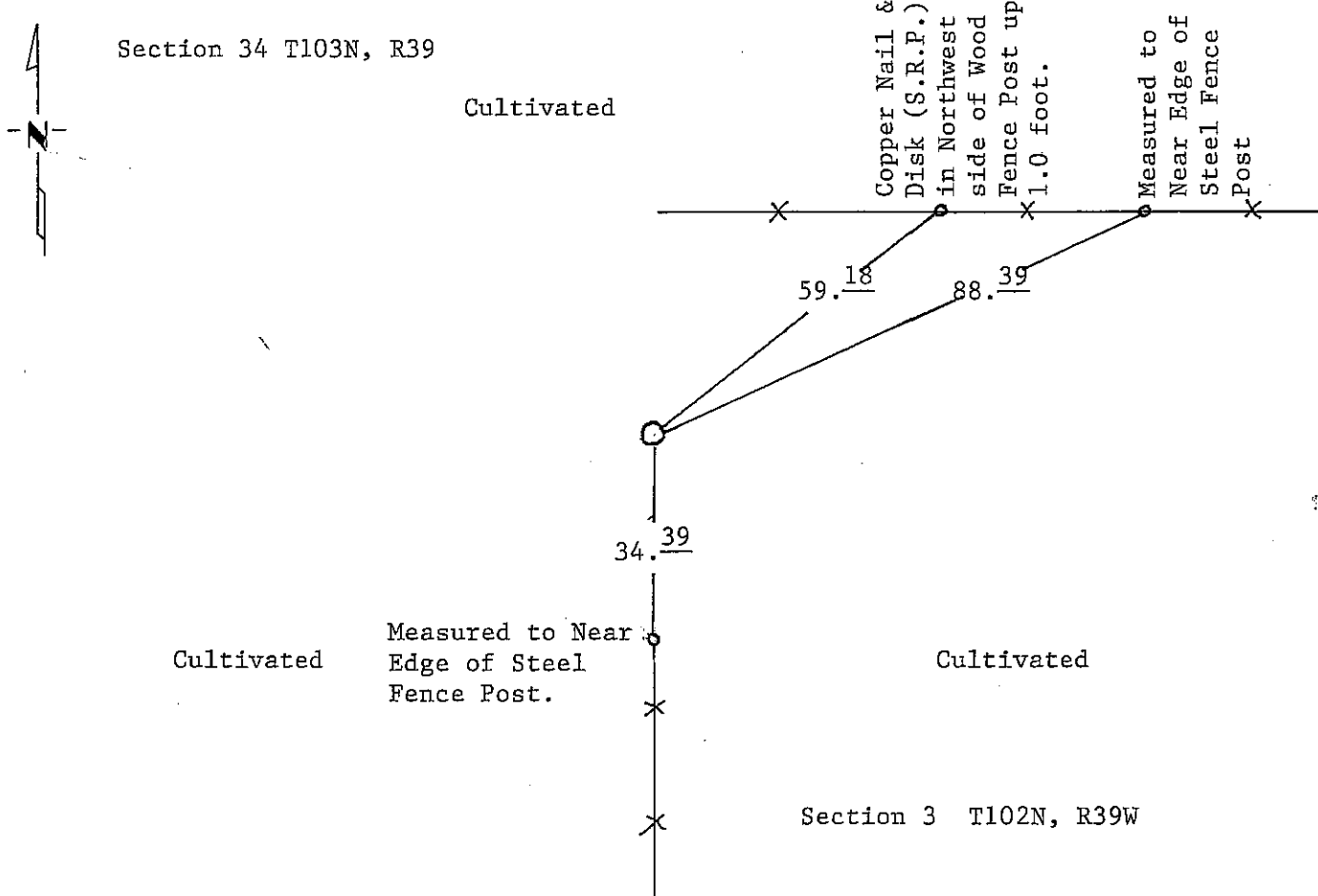
CERTIFICATE OF LOCATION OF GOVERNMENT CORNER

NORTH QUARTER Corner of Section 3, Township 10 2 N, Range 39 W, 5th P.M.
STATE OF MINNESOTA, County of NOBLES

At the corner location shown on the sketch:

- On _____ found a _____
DATE
- left monument as found, lowered monument, removed monument (explain)
- On 3-18-1992 placed a Square Tube (Unistrut) with MN/DOT PLS Cap down 1.5
DATE feet

SKETCH OF REFERENCE TIES



Statement of evidence relative to this corner location is on back of page.

I hereby certify that this document and the data contained herein was prepared by me or under my direct supervision.

Allan E. Schorn 10-1-92
SIGNATURE DATE

Registration No. 11858

- Land Surveyor, Professional Engineer
- County Surveyor, County Engineer

OFFICE OF THE COUNTY RECORDER
County of Nobles

I hereby certify that this document was filed in the Co. Recorders office at 8:30 A. .M. on the 21st day of October A.D., 1992

County Recorder Jasper Howard

By _____, Deputy

DOCUMENT NO. 249749

Statement of Evidence: North Quarter Corner of Section 3, T102N, R39W, 5th P.M.

- July 4, 1867 The original Public Land Survey was run in 1867 by Deputy Surveyor T. B. Walker, and his notes read, "Charred stake under $\frac{1}{4}$ corner for which post in mound".
- 1902 Nobles County Highway Records indicate "stake in 1902".
- Oct. 31, 1902 M. S. Smith, Nobles County Surveyor, notes indentify this corner as "original stake & mound".
- Nov. 15, 1990 A Minnesota Department of Transportation Survey Crew consisting of Roger Busse, John Brommer, Brian Ostman and Terry Makovsky, dug a hole at the intersection of the fences with a backhoe. The hole measured 8 feet by 14 feet by 3 feet deep (Clay) and found no evidence of the corner. They also dug a hole midway and on line between Section Corners (Lost Location) with measurements of 9 feet by 13 feet by 3 feet deep (Clay) and found no evidence of the corner.
- Mar. 18, 1992 A Minnesota Department of Transportation Survey Crew consisting of John Brommer, Brian Ostman, Dennis Janke and Thomas Boser, set the corner by lost location methods. They placed a square tube (Unistrut) with a Minnesota Department of Transportation Public Land Survey Cap down 1.5 feet below the field surface.

The lack of record and field evidence indicates that this corner be set by lost methods, by double proportionate measurements from found corners.

For additional information, including field measurements and photographs, contact the Minnesota Department of Transportation in Windom, MN.