

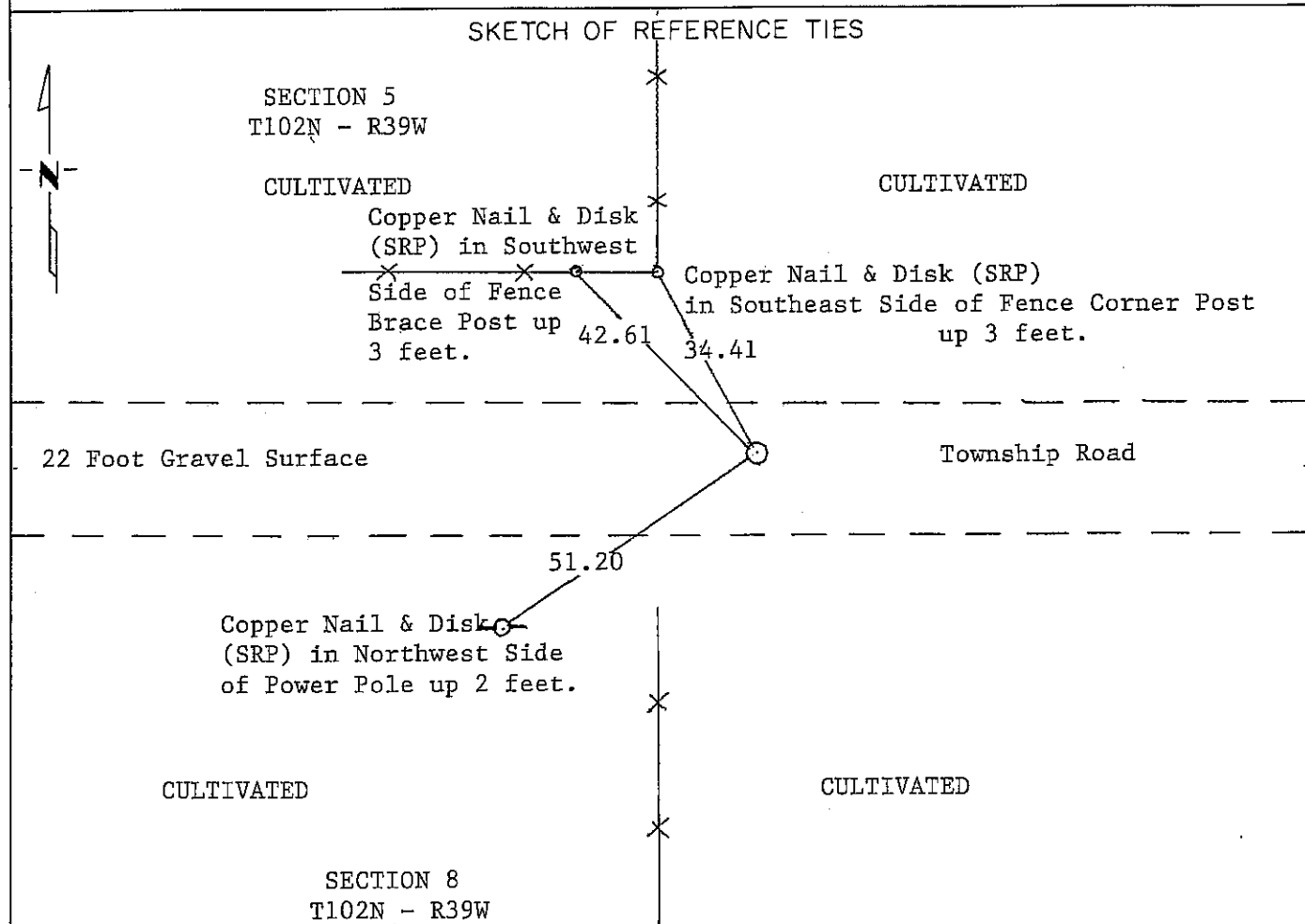
# CERTIFICATE OF LOCATION OF GOVERNMENT CORNER

NORTH QUARTER Corner of Section 8, Township 102N, Range 39W, 5 P.M.

STATE OF MINNESOTA, County of NOBLES

At the corner location shown on the sketch:

- On \_\_\_\_\_ found a \_\_\_\_\_  
DATE
- left monument as found,  lowered monument,  removed monument (explain)
- On 3-18-1992 placed a Square Tube (Unistrut) with MN/DOT PLS Cap down 0.4 of  
DATE a foot



Statement of evidence relative to this corner location is on back of page.

I hereby certify that this document and the data contained herein was prepared by me or under my direct supervision.

Allan E. Schoon 10-1-92  
SIGNATURE DATE

Registration No. 11858

- Land Surveyor,  Professional Engineer
- County Surveyor,  County Engineer

OFFICE OF THE COUNTY RECORDER  
County of Nobles

I hereby certify that this document was filed in the Co. Recorders office at 8:35 A.M. on the 21st day of October A.D., 1992

County Recorder Jayce Howard

By \_\_\_\_\_, Deputy

DOCUMENT NO. 249750

Statement of Evidence: North Quarter Corner of Section 8, T102N, R39W, 5th P.M.

- Oct. 23, 1868 The original Public Land Survey was run in 1868 by Deputy Surveyor George G. Howe. His original notes read, "Set post in mound with pits for  $\frac{1}{4}$  Section Corner."
- Aug. 21, 1989 R. Busse, K. Janovsky and G. Menken, a Minnesota Department of Transportation Field Crew, dug for  $\frac{1}{4}$  Section Corner. Found nothing but a few small rocks. Nothing to perpetuate a land corner.
- Oct. 12, 1989 R. Busse, R. Katke, M. Kruger and T. Makovsky, a Minnesota Department of Transportation Field Crew, dug a hole 6 feet East, 3 feet West, 4 feet South and  $4\frac{1}{2}$  feet North of lost location to a depth of about 5 feet. Found no evidence of original stake. Found a stone but no record of stone ever being placed here.
- Oct. 12, 1989 R. Busse, R. Katke, M. Kruger, and T. Makovsky, of the Minnesota Department of Transportation, placed an iron pin directly over the stone about 0.4 foot below the gravel surface. The location of the stone and iron pin is about 3 feet North and  $5\frac{1}{2}$  feet East of lost location.
- March 18, 1992 A Minnesota Department of Transportation Survey Crew, V. Lien, M. Murphy and A. Schafer, using lost location methods set and checked this corner on February 25, 1992. A square tube (unistrut) and a Minnesota Department of Transportation Public Land Survey Cap were placed at this corner. The location of this corner is close to the stone found on October 12, 1989. The lack of record and field evidence indicates that this corner be set by lost method by double proportionate measurements from found corners.

For additional information, including field measurements and photographs, contact the Minnesota Department of Transportation in Windom.