

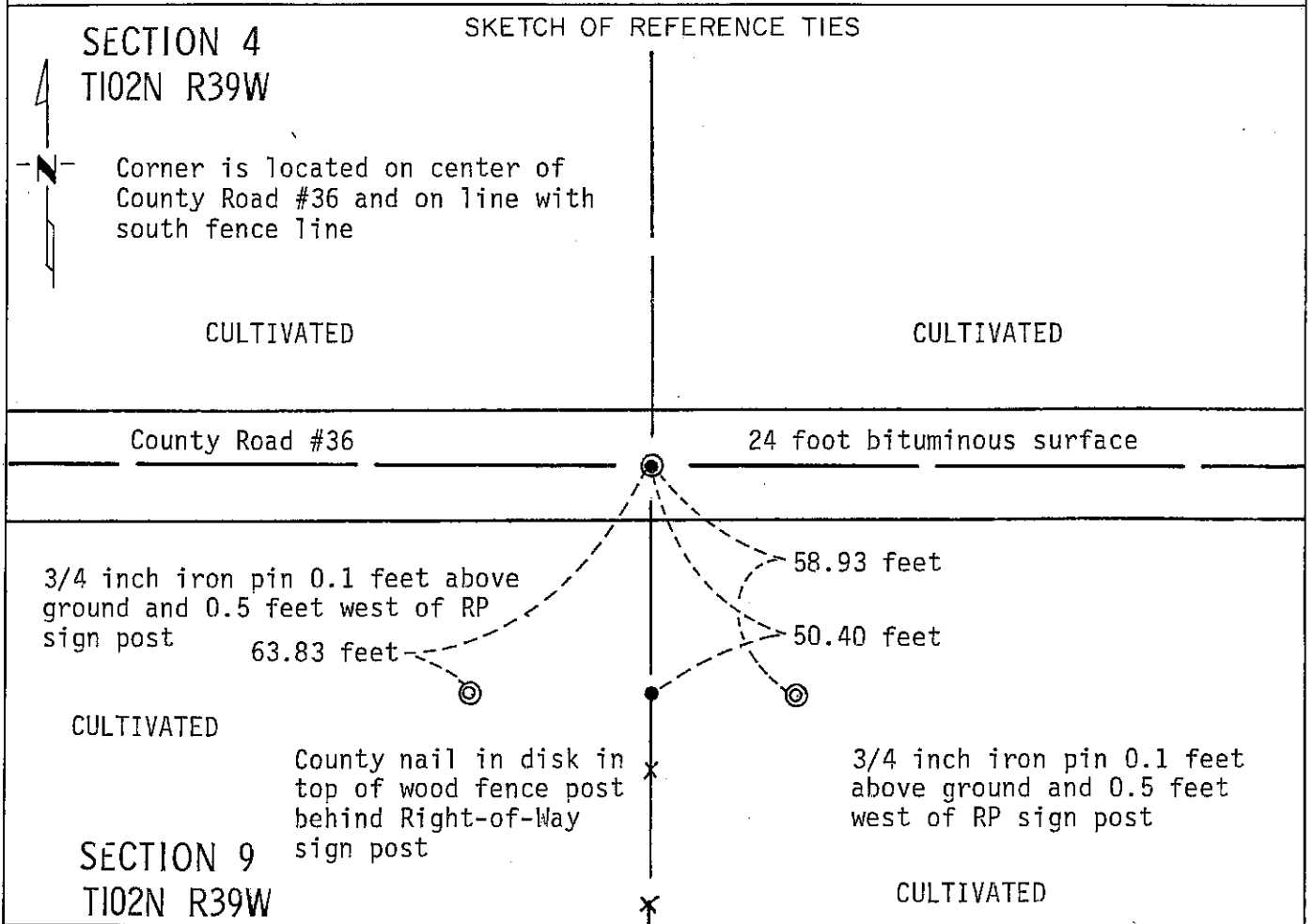
CERTIFICATE OF LOCATION OF GOVERNMENT CORNER

NORTH QUARTER Corner of Section 9, Township 102N, Range 39W, 5 P.M.

STATE OF MINNESOTA, County of NOBLES

At the corner location shown on the sketch:

- On Nov. 6, 1990 found a 3/8 inch diameter by 10 inch bridge spike, with missing head, down 0.2 feet below bituminous surface (See Statement of Evidence)
 - left monument as found, lowered monument, removed monument (explain)
- On _____ placed a _____



Statement of evidence relative to this corner location is on back of page.

I hereby certify that this document and the data contained herein was prepared by me or under my direct supervision.

Allan E. Schoon 3-11-91
SIGNATURE DATE

Registration No. 11858

- Land Surveyor, Professional Engineer
- County Surveyor, County Engineer

OFFICE OF THE COUNTY RECORDER

County of Nobles

I hereby certify that this document was filed in the Co. Recorders office at 8:15 A. M. on the 11th day of September A.D., 1991

County Recorder Grace Howard

By _____, Deputy

DOCUMENT NO. 245425

Statement of Evidence: North Quarter Corner Section 9 T102N R39W 5th P.M.

- Oct. 23, 1868 The original Public Land Survey was run in 1868 by Deputy Surveyor Richard H. L. Jewett and his notes read: "Set post in mound with pits for $\frac{1}{4}$ Section Corner".
- June 24, 1896 A survey plat by M. S. Smith, Nobles County Surveyor, reads: "S $\frac{1}{4}$ post stone".
- 1896 Nobles County Highway Department records show a stone in 1896.
- June 15, 1934 Gebo, a Minnesota Highway Department survey crew chief, found a red granite rock with a rounded top - no mark about 1 foot deep and to the south of the road centerline.
- 1964 Nobles County Highway Department records show a stone in 1964 with a concrete marker on top.
- 1973 Nobles County Highway Department records show an iron pin in 1973.
- Nov. 6, 1990 A Minnesota Department of Transportation field survey crew, composed of R. Busse, A. Schafer and D. Janke, found a bridge spike based on Nobles County Highway Department ties and records. The bridge spike is on the centerline of Nobles County Road No. 36 and on line with a fence to the south.

An analysis of old survey records and occupation lines of long standing indicate that the in place bridge spike is at a reasonable location for the corner.

For additional information, including measurements and photographs, contact the Minnesota Department of Transportation in Windom, Minnesota.