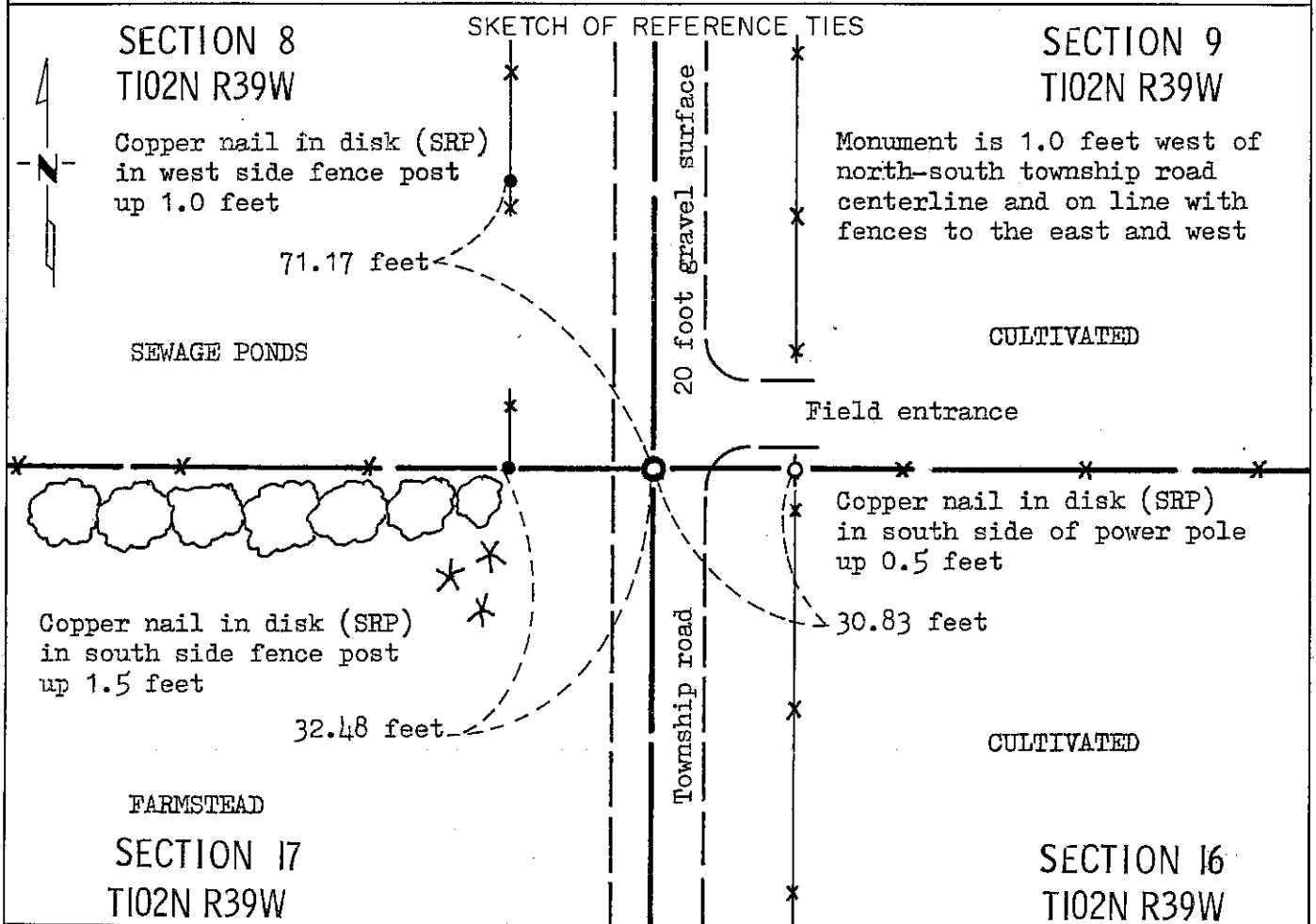


CERTIFICATE OF LOCATION OF GOVERNMENT CORNER

NORTHEAST Corner of Section 17, Township 102N, Range 39W, 5 P.M.
STATE OF MINNESOTA, County of NOBLES

At the corner location shown on the sketch:

- On Aug. 22, 1989 found a 13 inch by 12 inch by 6 inch field stone with chiseled
DATE "x" 17 inches below surface (See statement of evidence)
 left monument as found, lowered monument, removed monument (explain)
- On Aug. 22, 1989 placed a Minnesota Department of Transportation cast iron
DATE monument 0.5 feet below gravel surface



Statement of evidence relative to this corner location is on back of page.

I hereby certify that this document and the data contained herein was prepared by me or under my direct supervision.

Allan E. Schom 3-11-91
SIGNATURE DATE

Registration No. 11858

- Land Surveyor, Professional Engineer
- County Surveyor, County Engineer

OFFICE OF THE COUNTY RECORDER

County of Nobles

I hereby certify that this document was filed in the Co. Recorders office at 8:25 A. A.M. on the 11th day of September A.D., 1991

County Recorder Jay Howard

By _____, Deputy

DOCUMENT NO. 245427

Statement of Evidence: Northeast Corner Section 17 T102N R39W 5th P.M.

- Oct. 22, 1868 The original Public Land Survey was run in 1868 by Deputy Surveyor George G. Howe, and his notes read: "Set post in mound with pits for corner to secs. 8, 9, 16 & 17.
- Oct. 18, 1916 A plat by William A. Saxon, Nobles County Surveyor, show an old stone at the corner.
- 1916 Nobles County Highway Department records show a stone in 1916.
- Apr. 20, 1953 A plat by T. Nystrom, Nobles County Surveyor, indicates a stone is at the corner.
- 1953 Nobles County Highway Department records show a stone in 1953.
- 1959 Nobles County Highway Department records show a stone in 1959 -- placed an iron pin.
- Feb. 24, 1978 Foster and Tessmer, Minnesota Department of Transportation Technicians, using old field notes from a location survey of S.P. 5380-03 along Trunk Highway 60, found ties in a power pole to the east and a corner fence post to the west as described, but found a railroad spike 0.5 feet below the surface instead of a 5/8 inch rebar as the notes described. They made an additional tie to the northwest. No available information as to the origin of the railroad spike could be found.
- Aug. 22, 1989 A Minnesota Department of Transportation field survey crew, consisting of R. Busse, K. Janovsky, M. Johnson and G. Menken, searched for the corner using a tractor mounted backhoe. During the course of their excavation, they found a 9½ inch bridge spike down 1½ inches below the gravel surface over a 6 inch railroad spike which was over a 13 inch by 12 inch by 6 inch field stone with a chiseled "+" down 17 inches below the road surface. They removed the bridge spike and the railroad spike, and lowered the field stone to a depth of 3.2 feet below the gravel surface and set a Minnesota Department of Transportation Public Land Survey Monument directly over the "+" on the stone.

The origin of the stone could not be determined, but an analysis of old survey records and occupation lines of long standing indicate that the stone is at a reasonable location for the corner.

For additional information, including measurements and photographs, contact the Minnesota Department of Transportation in Windom, Minnesota.