

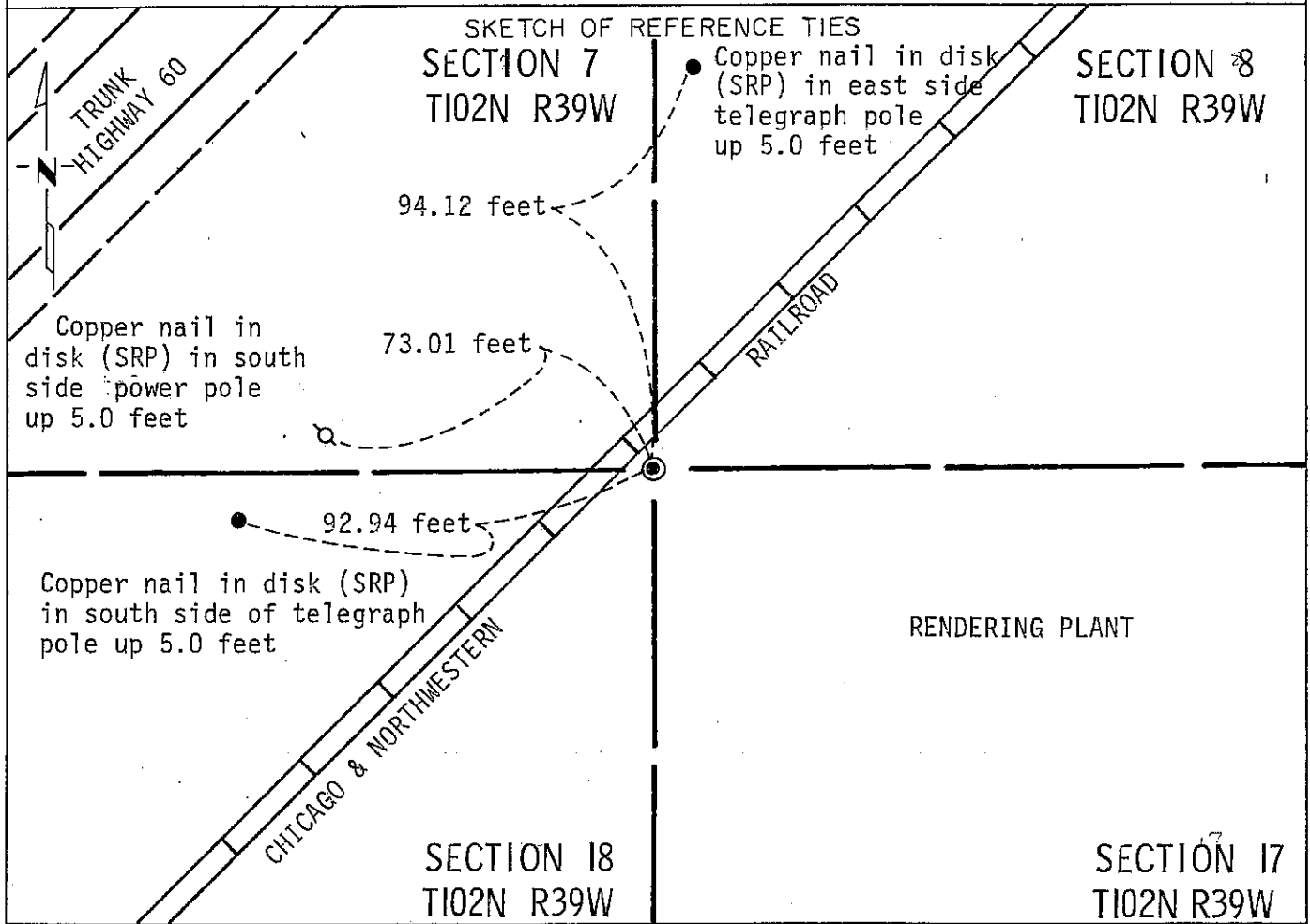
CERTIFICATE OF LOCATION OF GOVERNMENT CORNER

NORTHEAST Corner of Section 18, Township 102N, Range 39W, 5 P.M.

STATE OF MINNESOTA, County of NOBLES

At the corner location shown on the sketch:

- On Aug. 28, 1989 found a 1 3/4 inch outside diameter by 34 inch iron pipe flush
DATE
with surface of the ground
 - left monument as found, lowered monument, removed monument (explain)
- On _____ placed a _____
DATE



Statement of evidence relative to this corner location is on back of page.

I hereby certify that this document and the data contained herein was prepared by me or under my direct supervision.

Allan E. Schorn 3-11-91
SIGNATURE DATE

Registration No. 11858

- Land Surveyor, Professional Engineer
- County Surveyor, County Engineer

OFFICE OF THE COUNTY RECORDER
County of Nobles

I hereby certify that this document was filed in the Co. Recorders office at 8:30 A .M. on the 11th day of September A.D., 19 91

County Recorder Joyce Howard

By _____, Deputy

DOCUMENT NO. 245428

Statement of Evidence: Northeast Corner Section 18 T102N R39W 5th P.M.

- Oct. 23, 1868 The original Public Land Survey was run in 1868 by Deputy Surveyor George G. Howe, and his notes read: "Set post in mound with pits for corner to sec. 7, 8, 17 & 18".
- 1881 Nobles County Highway Department records show a stone set in 1881.
- May 11, 1899 M. S. Smith, Nobles County Surveyor, in a survey of Section 18 requested by George Griggs, certified on a plat that he "set stone" at the northeast corner of Section 18.
- Oct. 23 & 30 1912 A plat by William A. Saxon, Nobles County Surveyor, shows a quarried stone set in 1881.
- 1912 Nobles County Highway Department records show a stone in 1912.
- June 19, 1934 Gebo, a Minnesota Highway Department crew chief, found a flat limestone about 3 inches thick and 18 inches in diameter placed on edge with a field stone as a guard. The owner of a nearby rendering plant states that the stone is believed to be the true corner as placed by the Nobles County Surveyor. The notes indicate that the corner is 218.6 feet east of Truck Highway 60 P.O.T. 277+71.0 and 29 feet east of the railroad tracks.
- Nov., 1935 A Minnesota Highway Department Right-of-Way map indicates a stone at the corner.
- 1945 Minnesota Highway Department construction plans show the section corner is 195 feet south of Truck Highway 60 P.O.T. 280+64.5 and 25 feet south of the railroad tracks.
- Apr. 20, 1953 A plat by T. Nystrom, Nobles County Surveyor, indicates a stone at the section corner.
- 1953 Nobles County Highway Department records indicate a stone in 1953.
- Feb. 24, 1978 Foster and Tessmer, Minnesota Department of Transportation Technicians, used the notes from a Trunk Highway '60 location survey, S. P. 5380-03. These notes indicate an assumed corner at the junction of the road and a fence. They could not identify these land marks, but found a 1 3/4 inch pipe on line with the east-west fence and a north-south power pole line to the south.
- Aug. 28, 1989 R. Busse, Minnesota Department of Transportation field crew chief, accompanied by G. Menken, backhoe operator, and M. Johnson, dug for the corner using a tractor mounted backhoe. They located a 1 3/4 inch outside diameter by 34 inch long iron pipe flush with the ground. They excavated a 3 foot by 7.5 foot by 5 foot deep hole in the area of the pipe and found a quarried stone, but it did not appear to be in a "set" position. The entire area appears to have been disturbed as there are debris in the hole like an old landfill area.
- The origin of the iron pipe could not be determined, but an analysis of old survey records and occupation lines of long standing indicate that the in place iron pipe is at a reasonable location for the corner.
- For additional information, including measurements and photographs, contact the Minnesota Department of Transportation in Windom, MN.