

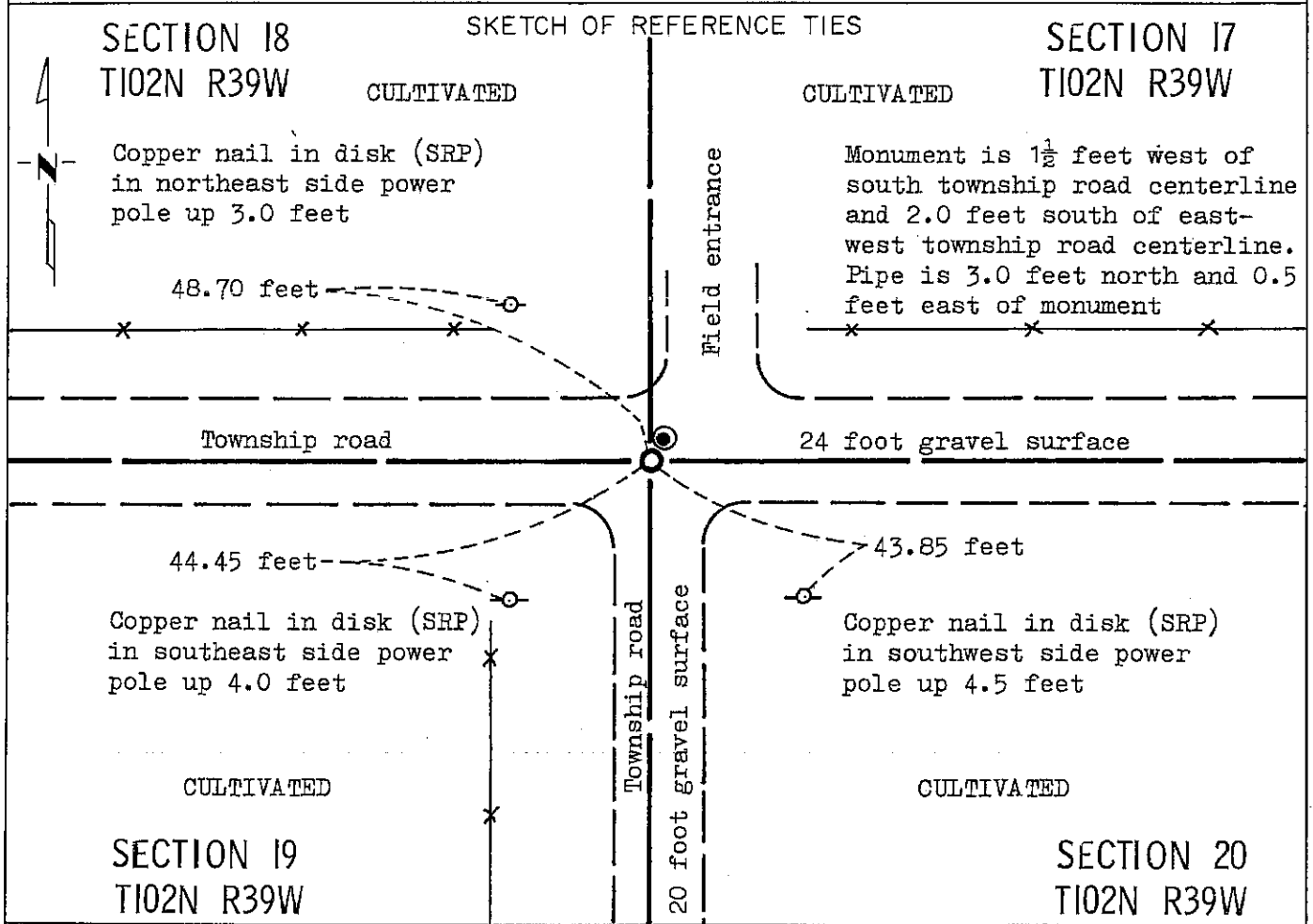
CERTIFICATE OF LOCATION OF GOVERNMENT CORNER

NORTHEAST Corner of Section 19, Township 102N, Range 39W, 5 P.M.

STATE OF MINNESOTA, County of NOBLES

At the corner location shown on the sketch:

- On Oct. 18, 1989 found a 1 1/4 inch diameter by 41 inch iron rod 35 inches below gravel surface. Found no evidence of a stone.
DATE
- left monument as found, lowered monument, removed monument (explain)
- On Oct. 19, 1989 placed a Minnesota Department of Transportation cast iron monument 0.5 feet below gravel surface
DATE



Statement of evidence relative to this corner location is on back of page.

I hereby certify that this document and the data contained herein was prepared by me or under my direct supervision.

Allan E. Schorn 3-11-91
SIGNATURE DATE

Registration No. 11858

- Land Surveyor, Professional Engineer
- County Surveyor, County Engineer

OFFICE OF THE COUNTY RECORDER

County of Nobles

I hereby certify that this document was filed in the Co. Recorders office at 8:40 A.M. on the 11th day of September A.D., 1991

County Recorder James Howard

By _____, Deputy

DOCUMENT NO. 245430

Statement of Evidence: Northeast Corner Section 19 T102N R39W 5th P.M.

- Oct. 22, 1868 The original Public Land Survey was run in 1868 by Deputy Surveyor Richard H. L. Jewett, and his notes read: "Set post in mound with pits for corner to secs. 17, 18, 19 & 20".
- May 11, 1899 M. S. Smith, Nobles County Surveyor, made a survey of part of Section 18 at the request of George Griggs. He certified by a plat of the survey that a stone is at the southeast corner of Section 18.
- 1899 Nobles County Highway Department records show a stone in 1899.
- 1910 Nobles County Highway Department records show an iron pin set in 1910.
- 1912 Nobles County Highway Department records show an iron pin set in 1912.
- Oct. 23, 1912 A plat by William A. Saxon, Nobles County Surveyor, shows an iron rod at the corner.
- 1966 Nobles County Highway Department records show an iron pin.
- Feb. 27, 1978 Minnesota Department of Transportation field crew of Foster, Dow and Tessmer, using field notes from a Trunk Highway 60 location survey, S. P. 5380-03, found a 1 3/4 inch iron pipe down 0.1 feet near the centerline of an east-west and a north-south township road and on line with a north-south power pole line to the north. The origin of the pipe could not be determined.
- Oct. 18, 1989 Minnesota Department of Transportation field crew chief, R. Busse, and crew, searched for the corner using a tractor mounted backhoe. They found a 1 3/8 inch outside diameter by 38 inch long pipe down 0.1 feet below the road surface. No record of the pipe's origin was found. Nothing was found below the pipe. They also found a 1 1/4 inch diameter by 41 inch long iron rod down 35 inches below the road surface, approximately 3 feet south and 0.5 feet west of the found pipe. Probing below the rod, they could find no evidence of a stone. They replaced the pipe in its original position approximately 0.3 feet below the gravel surface. The iron rod is apparently the same as indicated by William A. Saxon in 1912. They set a Minnesota Department of Transportation Public Land Survey Monument down 0.5 feet below the gravel surface and directly over the in place iron rod.

The found iron pipe was near the surface of the road, in comparison to the iron rod which was 35 inches below the road surface. There is no record of the origin of the pipe. The iron rod, indicated by William A. Saxon in his survey of October 23, 1912, is in a reasonable location based on his survey distance to the North Quarter Corner, Section 19, and on an analysis of old survey records and occupation lines of long standing.

For additional information, including measurements and photographs, contact the Minnesota Department of Transportation in Windom, Minnesota.

Tract Compared
 Photo
 Fee