

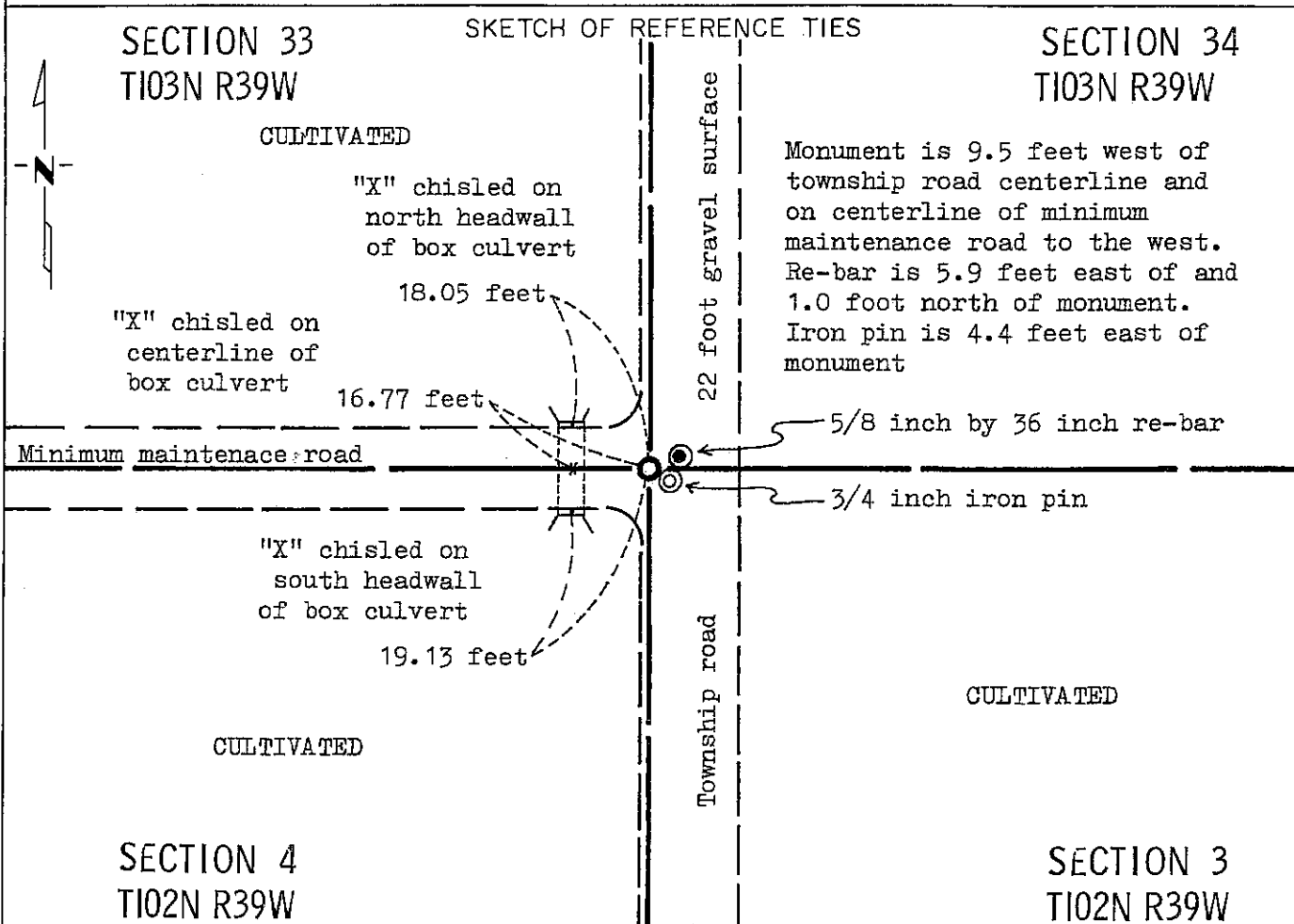
# CERTIFICATE OF LOCATION OF GOVERNMENT CORNER

NORTHEAST Corner of Section 4, Township 102N, Range 39W, 5 P.M.

STATE OF MINNESOTA, County of NOBLES

At the corner location shown on the sketch:

- On Aug. 16, 1989 found a 8 inch by 14 inch grey granite stone 4.3 feet below  
DATE  
gravel surface (See statement of evidence)
- left monument as found,  lowered monument,  removed monument (explain)
- On Aug. 17, 1989 placed a Minnesota Department of Transportation cast iron  
DATE  
monument 0.5 feet below gravel surface



Statement of evidence relative to this corner location is on back of page.

I hereby certify that this document and the data contained herein was prepared by me or under my direct supervision.

Allan E. Schorn 1-07-93  
SIGNATURE DATE

Registration No. 11858

- Land Surveyor,  Professional Engineer
- County Surveyor,  County Engineer

OFFICE OF THE COUNTY RECORDER  
County of Nobles

I hereby certify that this document was filed in the Co. Recorders office at 8:35 A. M. on the 20th day of January A.D., 1993

County Recorder Jayce Howard

By \_\_\_\_\_, Deputy

DOCUMENT NO. 250854

Statement of Evidence: Northeast Corner of Section 4, T102N, R39W, 5th P.M.

- July 4, 1867 The original Public Land Survey was run in 1867 by Deputy Surveyor T. B. Walker, and his notes read, " Charred stake under cor. secs. 3,4,33 & 34 for which post in mound".
- June 24, 1896 A survey plat by M. S. Smith, Nobles County Surveyor, indicates an original stake in a mound.
- Oct. 30 & 31,1902 A survey plat by M. S. Smith, Nobles County Surveyor, indicates an original stake in a mound.
- June 18, 1934 Gebo, with the Minnesota Highway Department, field crew chief, found a grey granite rock measuring about 8 inches by 14 inches, with the corner broken out of the north side, down about 12 inches below the road surface. He used the high point of the rock for the corner.
- Nov. 1935 A Minnesota Highway Department right-of-way map indicates a stone at the corner.
- Nobles County Highway Records show a stake in 1896, a stake in 1901, a stake in 1902 and a stone set in 1912.
- Aug. 16, 1989 A Minnesota Department of Transportation survey crew consisting of Roger Busse, Marcia Johnson and Gene Menken, dug a hole with a backhoe 11 feet north-south and 19 feet east-west in approximate center of roadways at a depth of 4 feet. They found three rocks within 0.4 foot of each other at depths of 1.6 feet to 2.2 feet below the gravel surface. They removed the rocks and placed a 3/4 inch iron pin over an average location of the rocks. The size of the rocks were 0.8 foot by 0.5 foot by 0.4 foot, 1.4 feet by 0.7 foot by 0.5 foot and 1.0 foot by 0.8 foot by 0.7 foot. They continued to dig down 4.3 feet and found a grey granite rock about 8 inches by 14 inches. They placed a Minnesota Department of Transportation Cast Iron Monument over the grey granite rock. The monument is about 9.5 feet west of the centerline of the Township Road and on centerline of the Minimum Maintenance Road, 5.9 feet west of 5/8 inch by 36 inch rebar(found inplace), and 1 foot north and 4.4 feet west of the 3/4 inch iron pin.

An analysis of the Statement of Evidence, occupation lines of long standing and field measurements indicate that the stone is at the corner.

For additional information, including field measurements and photographs, contact the Minnesota Department of Transportation in Windom.