

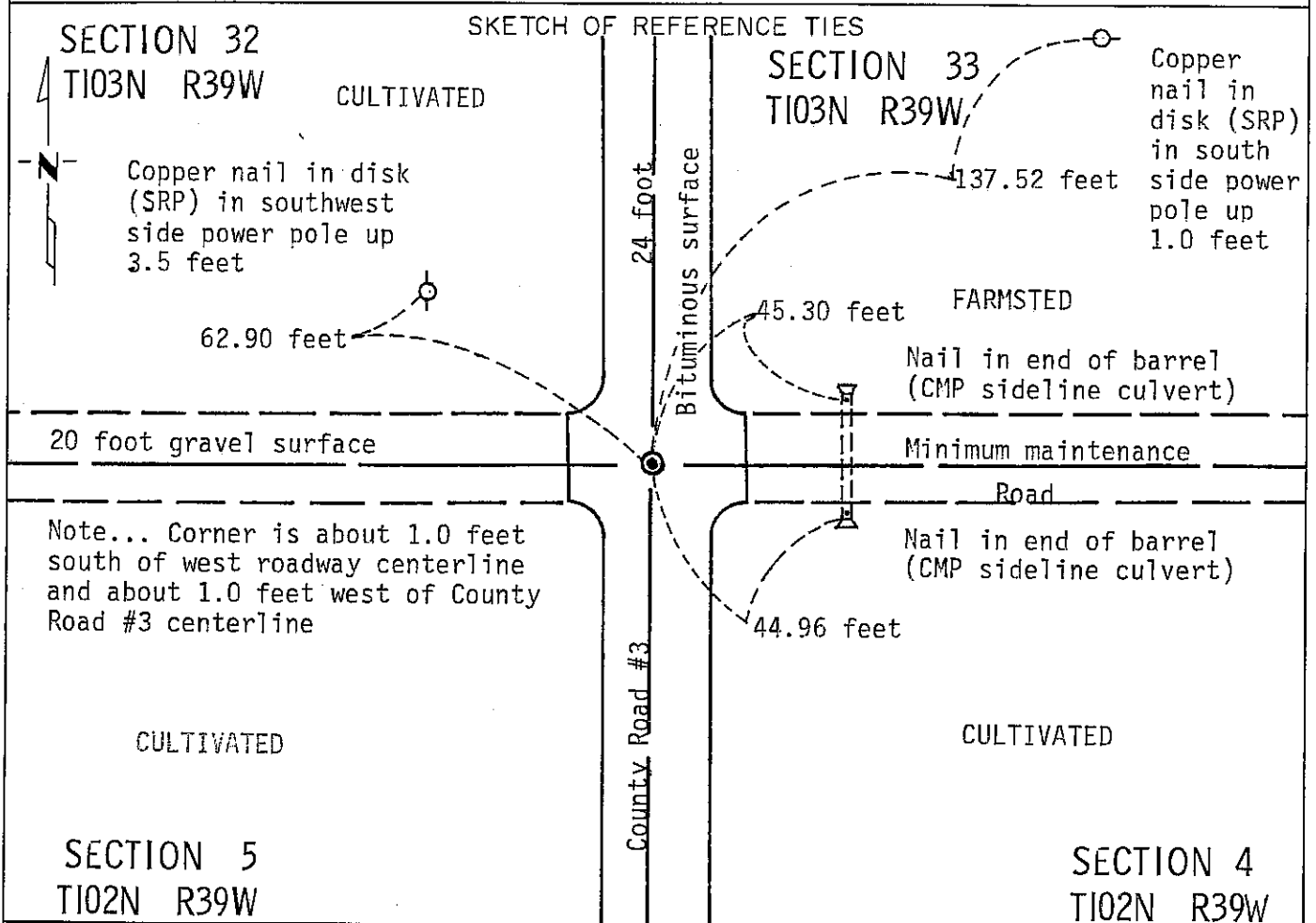
CERTIFICATE OF LOCATION OF GOVERNMENT CORNER

NORTHEAST Corner of Section 5, Township 102N, Range 39W, 5 P.M.

STATE OF MINNESOTA, County of NOBLES

At the corner location shown on the sketch:

- On Nov. 7, 1990 found a Bridge spike 1.3 feet below bituminous surface
DATE
(See statement of Evidence)
- left monument as found, lowered monument, removed monument (explain)
- On _____ placed a _____
DATE



Statement of evidence relative to this corner location is on back of page.

I hereby certify that this document and the data contained herein was prepared by me or under my direct supervision.

Allan E. Schorn 3-11-91
SIGNATURE DATE

Registration No. 11858

- Land Surveyor, Professional Engineer
- County Surveyor, County Engineer

OFFICE OF THE COUNTY RECORDER
County of Nobles

I hereby certify that this document was filed in the Co. Recorders office at 4:50 P. M. on the 6th day of September A.D., 1991

County Recorder Carol Howard

By _____, Deputy

DOCUMENT NO. 245403

Statement of Evidence: Northeast Corner of Section 5 T102N R39W 5th P.M.

- July 4, 1867 The original Public Land Survey between T102N and T103N was run in 1867 by Deputy Surveyor T. B. Walker, and his notes read: "Charred stake under Cor Secs 4, 5, 32 & 33 Moderately rolling soil No. 1".
- June 24, 1896 A survey plat by M. S. Smith, Nobles County Surveyor, shows: "Iron Wagon Sk_____ " (not legible).
- 1896 Nobles County Highway Department records show an iron pin in 1896.
- 1963 Nobles County Highway Department records show a wood stake in 1963.
- 1966 Nobles County Highway Department records show a wood stake in 1966 -- placed an iron rod.
- Nov. 7, 1990 A Minnesota Department of Transportation field survey crew, consisting of R. Busse, D. Janke and B. Ostman, found a bridge spike using Nobles County Highway Department records and ties. The bridge spike is about 1 foot south of the west roadway centerline and about 1 foot west of County Road #3 centerline.

An analysis of old survey records and occupation lines of long standing indicate that the in-place bridge spike is at a reasonable location for the corner.

For additional information, including measurements and photographs, contact the Minnesota Department of Transportation in Windom, Minnesota.

Tract 102N R39W 5th P.M. Compared du
 Photo du
 Fee DC