

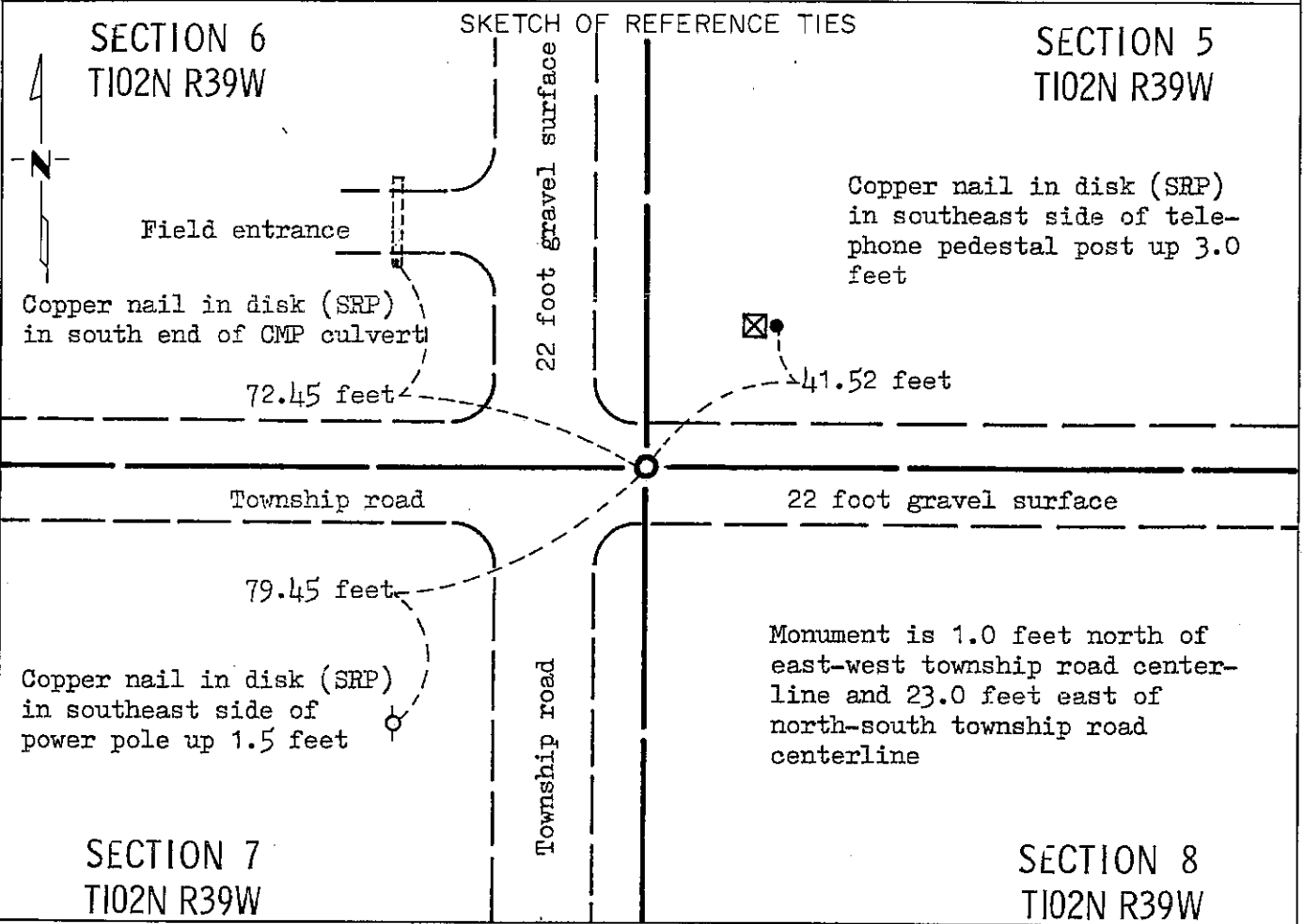
CERTIFICATE OF LOCATION OF GOVERNMENT CORNER

NORTHEAST Corner of Section 7, Township 102N, Range 39W, 5 P.M.

STATE OF MINNESOTA, County of NOBLES

At the corner location shown on the sketch:

- On Aug. 18, 1989 found a 6 inch by 6 inch by 13 inch stone 35 inches below gravel surface (See statement of evidence)
 - left monument as found, lowered monument, removed monument (explain)
- On Aug. 18, 1989 placed a Minnesota Department of Transportation cast iron monument 0.5 feet below gravel surface.



Statement of evidence relative to this corner location is on back of page.

I hereby certify that this document and the data contained herein was prepared by me or under my direct supervision.

Allan E. Schoon 3-11-91
SIGNATURE DATE

Registration No. 11858

- Land Surveyor, Professional Engineer
- County Surveyor, County Engineer

OFFICE OF THE COUNTY RECORDER

County of Nobles

I hereby certify that this document was filed in the Co. Recorders office at 8:00 A. M. on the 11th day of September A.D., 1991

County Recorder Joyce Howard

By _____, Deputy

DOCUMENT NO. 245422

Statement of Evidence: Northeast Corner of Section 7 T102N R39W 5th P.M.

- Oct. 23, 1868 The original Public Land Survey was run in 1868 by Deputy Surveyor George G. Howe and his notes read: "Set post in mound with pits for corner to sections 5, 6, 7 & 8 Surface rolling soil No. 1".
- May 21, 1894 A survey plat by Milton S. Smith, Nobles County Surveyor, shows a stone in place at the corner.
- 1894 Nobles County Highway Department records show a stone in 1894.
- June 15, 1918 A plat by William A. Saxon, Nobles County Surveyor, shows an old stone at the corner.
- 1918 Nobles County Highway Department records show a stone in 1918.
- Aug. 18, 1989 A Minnesota Department of Transportation field survey crew, consisting of R. Busse, K. Janovsky, M. Johnson and G. Menken, searched for the corner using a tractor mounted backhoe. During the course of their excavation, they found a $\frac{1}{2}$ inch diameter by 20 inch long rebar with a Registered Land Survey #12967 plastic cap down 0.7 feet below the gravel surface over a 6 inch by 6 inch by 13 inch stone 35 inches below the gravel surface. There were no visible markings on the stone. They left the stone as found, and removed the rebar to accommodate a Minnesota Department of Transportation Public Land Survey Monument placed 0.5 feet below the gravel surface and directly over the in place stone.

The origin of the stone could not be determined, but an analysis of old survey records and occupation lines of long standing indicate that the in place stone is at a reasonable location for the corner.

For additional information, including measurements and photographs, contact the Minnesota Department of Transportation in Windom, Minnesota.