

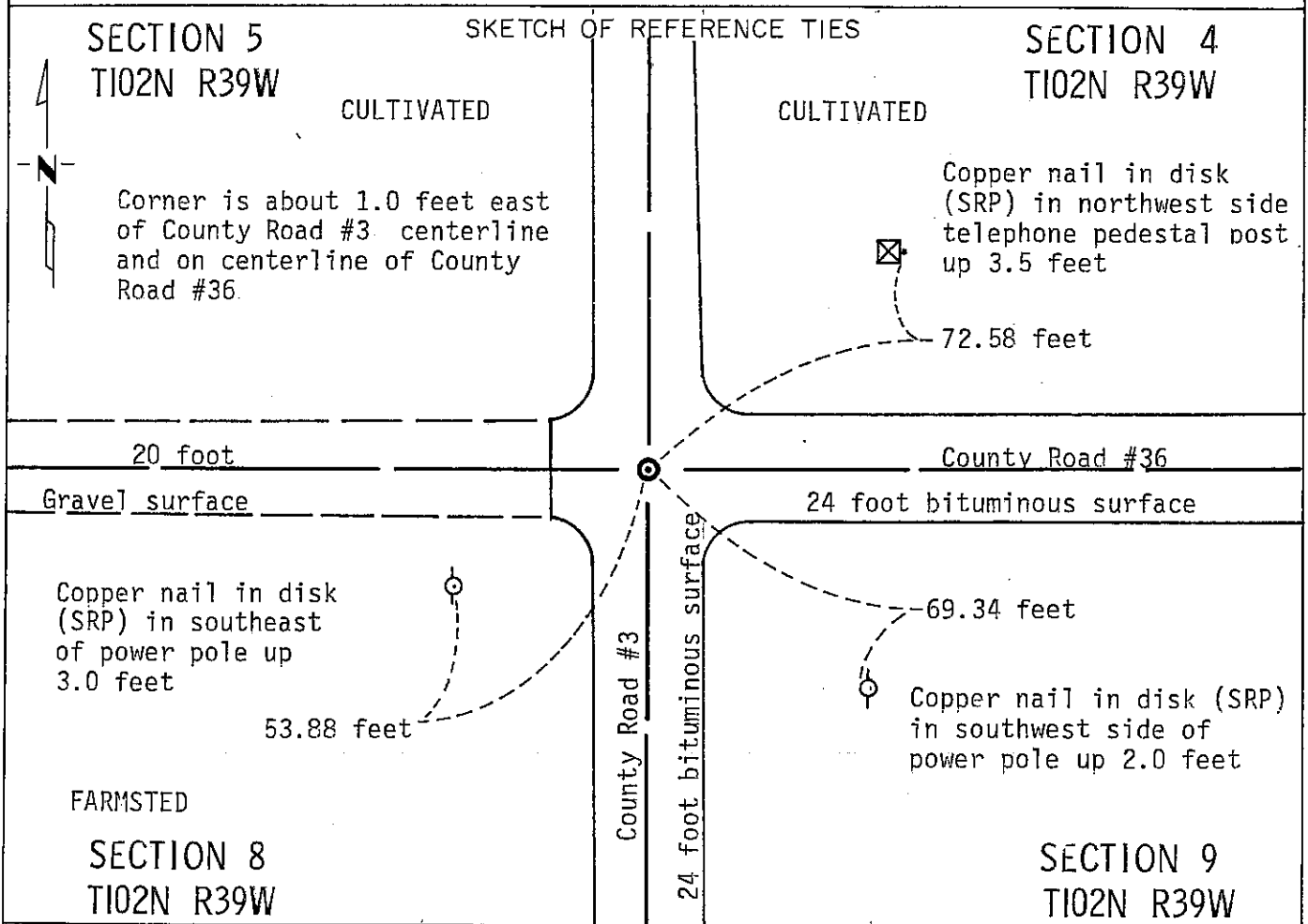
CERTIFICATE OF LOCATION OF GOVERNMENT CORNER

NORTHEAST Corner of Section 8, Township T102N, Range 39W, 5 P.M.

STATE OF MINNESOTA, County of NOBLES

At the corner location shown on the sketch:

- On Nov. 7, 1990 found a Bridge spike 1.4 feet below bituminous surface
DATE
 (See Statement of Evidence)
 left monument as found, lowered monument, removed monument (explain)
- On _____ placed a _____
DATE



Statement of evidence relative to this corner location is on back of page.

I hereby certify that this document and the data contained herein was prepared by me or under my direct supervision.

Allen E. Schorn 3-11-91
SIGNATURE DATE

Registration No. 11858

- Land Surveyor, Professional Engineer
- County Surveyor, County Engineer

OFFICE OF THE COUNTY RECORDER

County of Nobles

I hereby certify that this document was filed in the Co. Recorder's office at 8:05 A.M. on the 14th day of September A.D., 1991

County Recorder James Howard

By _____, Deputy

DOCUMENT NO. 245423

Statement of Evidence: Northeast Corner of Section 8 T102N R39W 5th P.M.

- Oct. 22, 1868 The original Public Land Survey was run in 1868 by Deputy Surveyors Goerge G. Howe and Richard H. L. Jewett, and their notes state: "Set post in mound with pits for corner to Sections 4, 5, 8 & 9".
- June 24, 1896 A survey plat by M. S. Smith, Nobles County Surveyor, shows a stone in a mound a distance of 596 feet east of the centerline of the railroad tracks.
- 1896 Nobles County Highway Department records show a stone in 1896.
- June 15, 1918 A plat by William A. Saxon, Nobles County Surveyor, indicates an old stone at the corner.
- 1918 Nobles County Highway Department records show a stone in 1918.
- June 13, 1934 A Minnesota Highway Department crew chief, Gebo, for Trunk Highway 60 location survey states in his notes: "True corner -- NW Cor Sec 9-102-39 -- Found grey granite rock with approx. 8" rounded top -- small "+" mark -- about 1' below grade". (Notes show cor. 48°32' Lt. (due north) of Trunk Highway 60 P.O.T. Sta. 351+16.1 on sec. line a distance of 360.7' from T. H. 60).
- Nov., 1935 A Minnesota Highway Department Right-of-Way map indicates a stone at the corner.
- 1963 Nobles County Highway Department records show a stone in 1963 -- placed a wood stake.
- 1965 Nobles County Highway Department records show a wood stake in 1965 -- placed an iron pin.
- Nov. 7, 1990 A Minnesota Department of Transportation field crew, consisting of R. Busse, D. Janke and B. Ostman, found a bridge spike at the corner based on Nobles County Highway Department records and ties. The bridge spike is about 1 foot east of County Road #3 centerline and on centerline of County Road #36.
- An analysis of survey records, measurements and occupation lines of long standing indicate that the inplace bridge spike is at a reasonable location for the corner.
- For additional information, including measurements and photographs, contact the Minnesota Department of Transportation in Windom, Minnesota.