

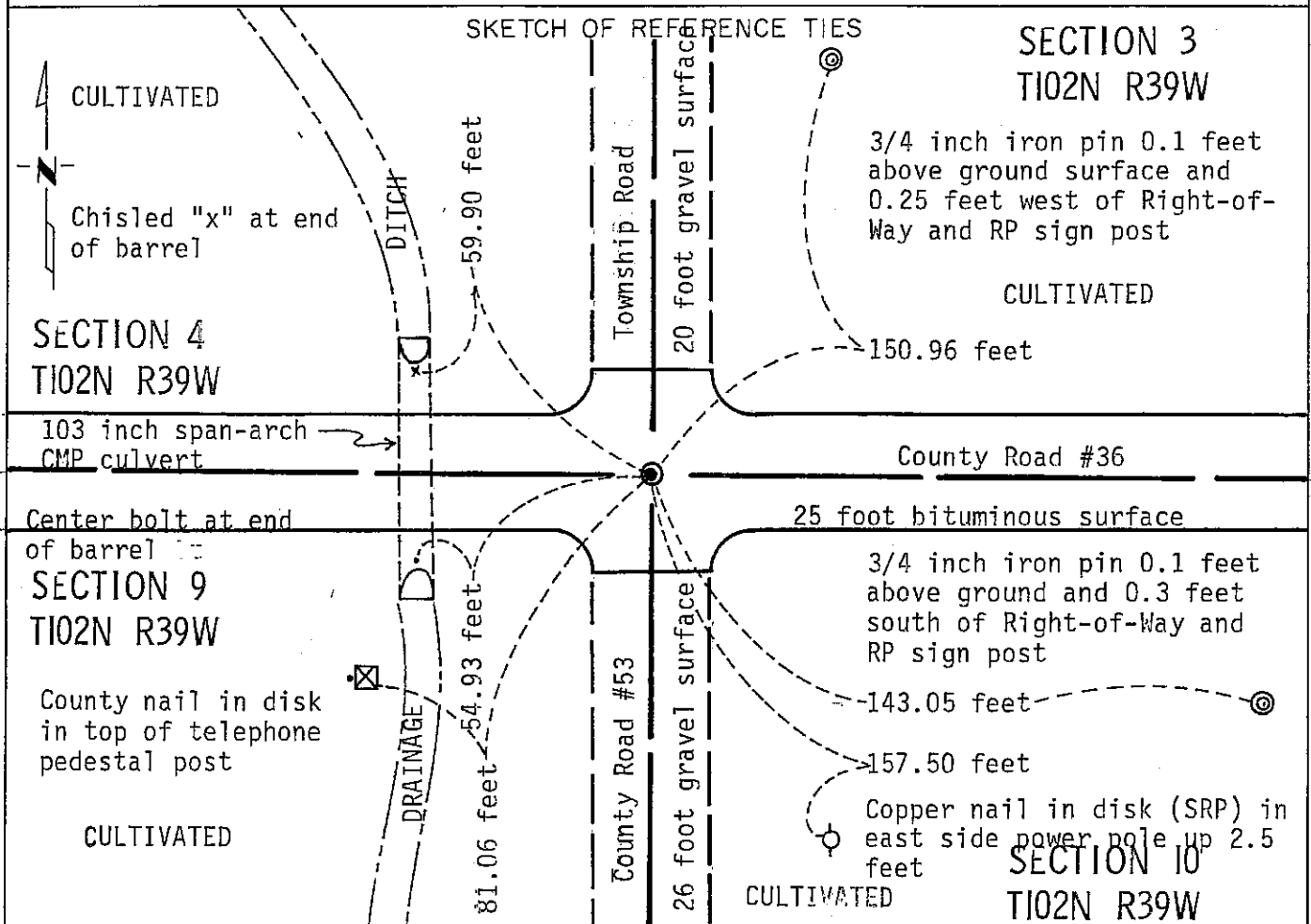
CERTIFICATE OF LOCATION OF GOVERNMENT CORNER

NORTHEAST Corner of Section 9, Township 102N, Range 39W, 5 P.M.

STATE OF MINNESOTA, County of NOBLES

At the corner location shown on the sketch:

- On Nov. 6, 1990 found a 3/8 inch diameter bridge spike, with missing head,
0.1 feet below bituminous surface (See Statement of Evidence)
 left monument as found, lowered monument, removed monument (explain)
- On _____ placed a _____
DATE



Statement of evidence relative to this corner location is on back of page.

I hereby certify that this document and the data contained herein was prepared by me or under my direct supervision.

Allan E. Schoon 3-11-91
SIGNATURE DATE

Registration No. 11858
 Land Surveyor, Professional Engineer
 County Surveyor, County Engineer

OFFICE OF THE COUNTY RECORDER
County of Nobles

I hereby certify that this document was filed in the Co. Recorders office at 8:20 A.M. on the 11th day of September A.D., 1991

County Recorder Oppe Howard
By _____, Deputy
DOCUMENT NO. 245426

Statement of Evidence: Northeast Corner Section 9 T102N R39W 5th P.M.

- Oct. 21, 1868 The original Public Land Survey was run in 1868 by Deputy Surveyor George G. Howe and his notes read: "Set post in mound with pits for corner to Secs. 3, 4, 9 & 10".
- June 24, 1896 A survey plat by M. S. Smith, Nobles County Surveyor, reads: "Stone".
- 1896 Nobles County Highway Department records show a stone in 1896.
- Sept. 6, 1912 A survey plat by William A. Saxon, Nobles County Surveyor, states that he set a stone at the corner.
- 1912 Nobles County Highway Department records show a stone set in 1912.
- 1965 Nobles County Highway Department records show an iron pin in 1965.
- 1973 Nobles County Highway Department records show an iron pin in 1973.
- Nov. 6, 1990 A Minnesota Department of Transportation field survey crew, consisting of R. Busse, A. Schafer and D. Janke, located a bridge spike based on Nobles County Highway Department ties and records. The bridge spike is approximately on the centerline of Nobles County Road No. 36 east-west and on the centerline of gravel roads to the north and south.

An analysis of old survey records and occupation lines of long standing indicate that the bridge spike is at a reasonable location for the corner.

For additional information, including measurements and photographs, contact the Minnesota Department of Transportation in Windom, Minnesota.