

# CERTIFICATE OF LOCATION OF GOVERNMENT CORNER

South 1/4 Corner of Section 12, Township 102N, Range 39W, 5th P.M.  
STATE OF MINNESOTA, County of Nobles

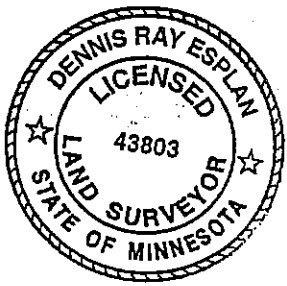
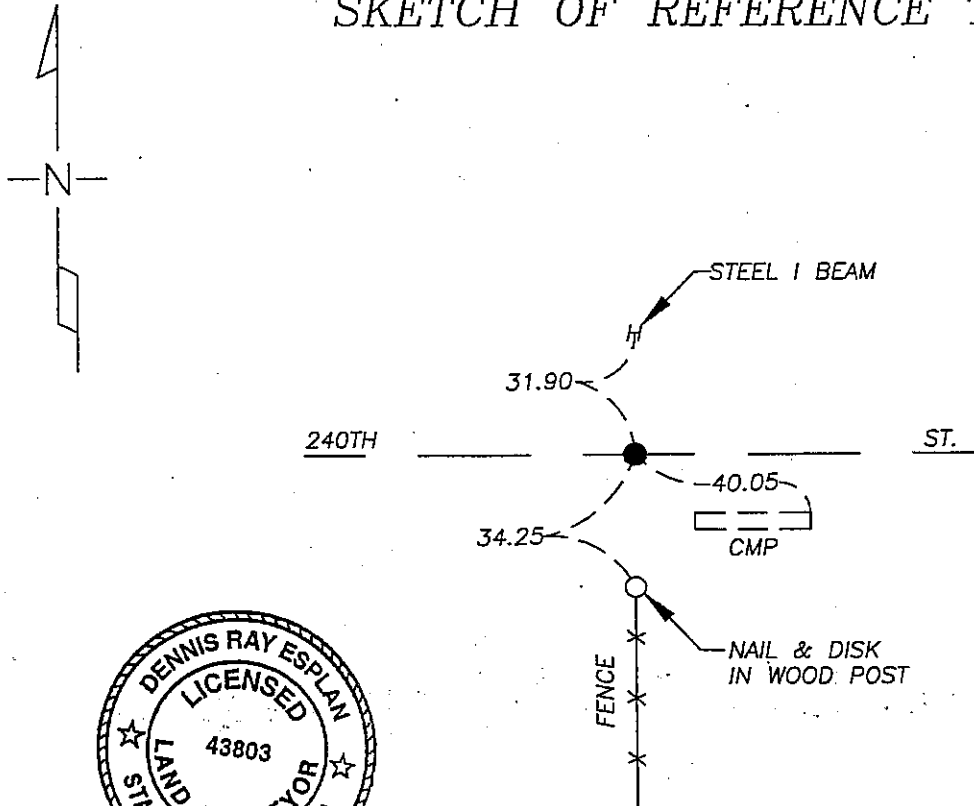
At the corner location shown on the sketch

On 9/26/05 found a t bar 2" deep on road centerline and in line with fence south.

left monument as found  lowered monument,  removed monument (explain)

On \_\_\_\_\_ placed a \_\_\_\_\_

## SKETCH OF REFERENCE TIES



NAD 83 (1996)  
US STATE PLANE 1983  
MN SOUTH  
566723.05N  
2237335.71E

Statement of evidence relative to this corner location is on page 2.

I hereby certify that this document and the data contained herein was prepared by me or under my direct supervision.

Dennis Ray Esplan 10/29/05  
SIGNATURE DATE

MN. REGISTRATION NO. 43803

- Land Surveyor,  Professional Engineer
- County Surveyor,  County Engineer

### OFFICE OF THE COUNTY RECORDER

I hereby certify that this document was filed in the Co. Recorder's Office at \_\_\_\_\_ on the

\_\_\_\_\_ day of \_\_\_\_\_

County Recorder \_\_\_\_\_  
By \_\_\_\_\_, Deputy

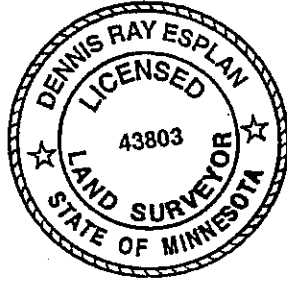
DOCUMENT NO. \_\_\_\_\_

Statement of Evidence

1868 Original Township Subdivision was surveyed by Jewett & Howe

1968 Nobles Co. Hwy. Dept. records indicate a spike and 1" x 2" was found.

2005 Gerald Vickerman PLS and Jeremy Lund, with Zieske Land Surveying, found iron T Bar on centerline of road and in line with fence south.



DOCUMENT NUMBER A 306805

Certified, Filed and or Recorded on  
NOV. 07, 2005 AT 03:05:00PM

*Lynn M. Wilson*

\_\_\_\_\_ COMPARED \_\_\_\_\_  
 TRACKED *DR* \_\_\_\_\_ COMPARED \_\_\_\_\_  
 PHOTO \_\_\_\_\_  
 FEE \_\_\_\_\_

NOBLES COUNTY RECORDER  
 LYNN M. WILSON  
 507-372-8216