

CERTIFICATE OF LOCATION OF GOVERNMENT CORNER

South 1/4 Corner of Section 13, Township 102N, Range 39W, 5th P.M.

STATE OF MINNESOTA, County of Nobles

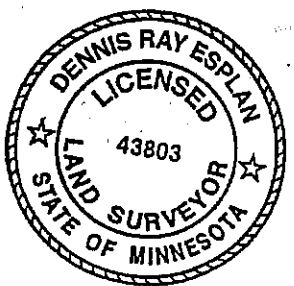
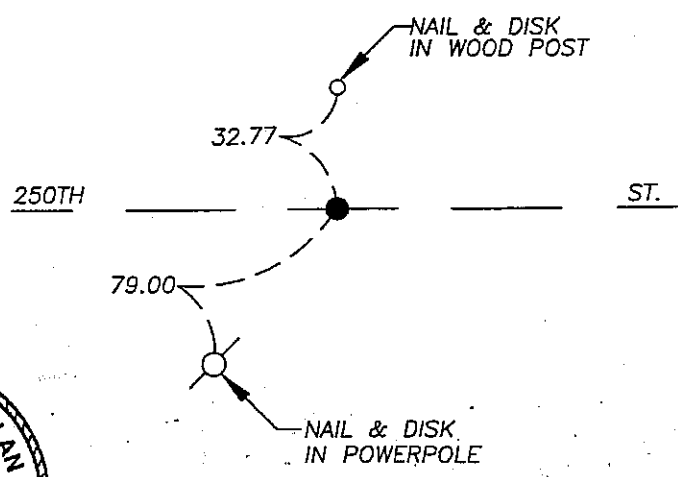
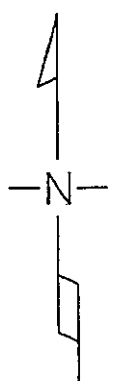
At the corner location shown on the sketch

On 9/21/05 found a 12" X 12" stone 14" deep and on centerline of road.

left monument as found lowered monument, removed monument (explain)

On 9/21/05 placed a 1" iron pipe with red survey cap #43803 over top of stone.

SKETCH OF REFERENCE TIES



NAD 83 (1996)
US STATE PLANE 1983
MN SOUTH
561376.27N
2237177.54E

Statement of evidence relative to this corner location is on page 2.

I hereby certify that this document and the data contained herein was prepared by me or under my direct supervision.

Dennis Ray Esplan 10/29/05
SIGNATURE DATE

MN. LICENSE NO. 43803

Land Surveyor, Professional Engineer

County Surveyor, County Engineer

OFFICE OF THE COUNTY RECORDER

I hereby certify that this document was filed in the Co. Recorder's Office at _____ on the _____ day of _____

County Recorder _____
By _____, Deputy

DOCUMENT NO. _____

Statement of Evidence

1868 Original Township Subdivision was surveyed by Jewett & Howe.

1960 Nobles Co. Hwy. Dept. records indicate a wood stake was set.

2005 Gerald Vickerman PLS and Jeremy Lund, with Zieske Land Surveying, excavated with a backhoe and found a 12" X 12" stone, 14" deep and on centerline of road. Crew placed a 1" iron pipe with red survey cap #43803 over top of stone.

