

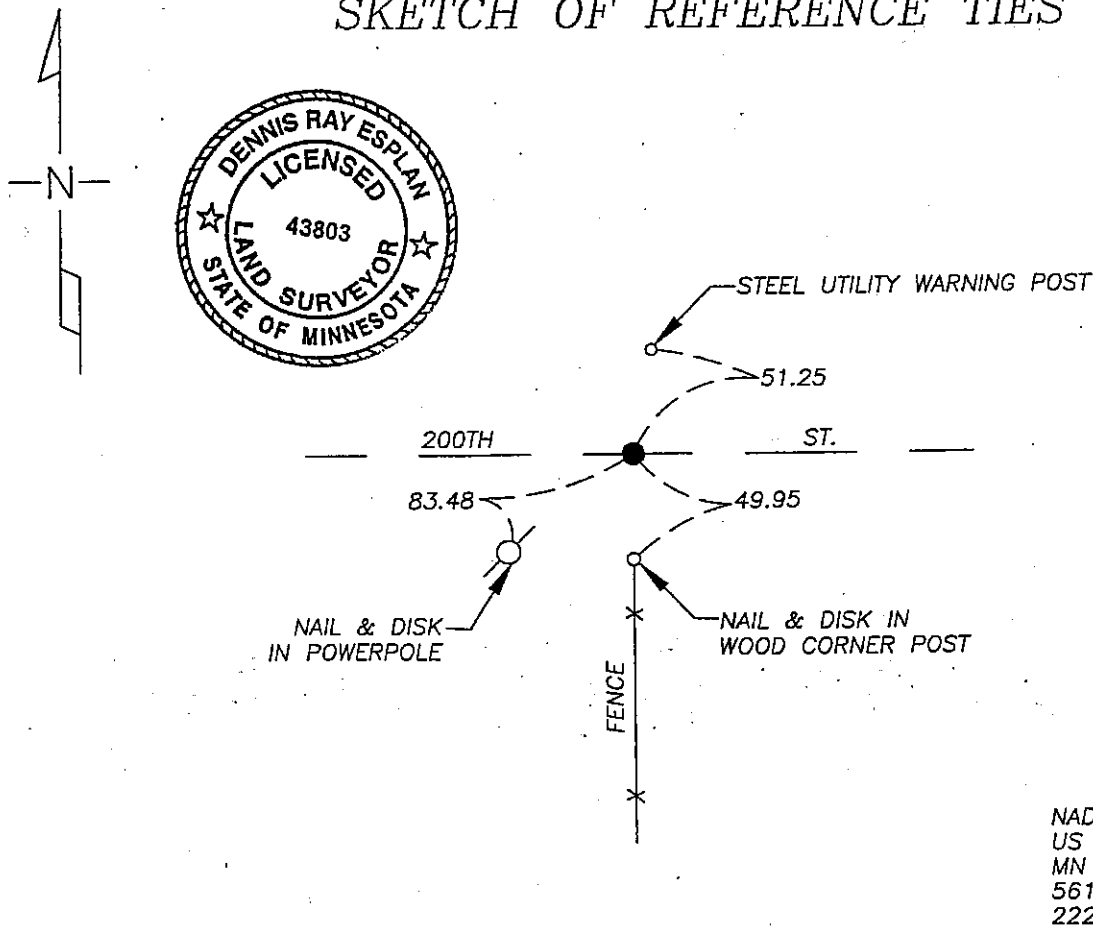
# CERTIFICATE OF LOCATION OF GOVERNMENT CORNER

South 1/4 Corner of Section 15, Township 102N, Range 39W, 5th P.M.  
 STATE OF MINNESOTA, County of Nobles

At the corner location shown on the sketch

- On 9/21/05 found a 60d spike at road surface, excavated below and found 3/4" iron pipe 2' deep and on road centerline.
  - left monument as found
  - lowered monument,
  - removed monument (explain)
- On 9/21/05 placed a 1" iron pipe with red survey cap #43803 over top of iron pipe.

## SKETCH OF REFERENCE TIES



NAD 83 (1996)  
 US STATE PLANE 1983  
 MN SOUTH  
 561691.79N  
 2226786.70E

Statement of evidence relative to this corner location is on page 2.

I hereby certify that this document and the data contained herein was prepared by me or under my direct supervision.

Dennis Ray Esplan 10/29/05  
 SIGNATURE DATE

MN. LICENSE NO. 43803

- Land Surveyor,  Professional Engineer
- County Surveyor,  County Engineer

OFFICE OF THE COUNTY RECORDER

I hereby certify that this document was filed in the Co. Recorder's Office at \_\_\_\_\_ on the \_\_\_\_\_ day of \_\_\_\_\_  
 County Recorder \_\_\_\_\_  
 By \_\_\_\_\_, Deputy  
 DOCUMENT NO. \_\_\_\_\_

Statement of Evidence

1868 Original Township Subdivision was surveyed by Jewett & Howe.

1913 Nobles Co. Hwy. Dept. records indicate a stone was found.

1959 Nobles Co. Hwy. Dept. records indicate an iron pin was found.

2005 Gerald Vickerman PLS and Jeremy Lund, with Zieske Land Surveying, found a 60d spike at road surface, excavated below and found a 3/4" iron pipe, 2' deep on centerline of road.



DOCUMENT NUMBER A 306812

Certified, Filed and or Recorded on  
NOV. 07, 2005 AT 03:40:00PM

*Lynn M. Wilson*

TRACKED \_\_\_\_\_ COMPARED \_\_\_\_\_  
PHOTO   *2*    
FEE \_\_\_\_\_

NOBLES COUNTY RECORDER  
LYNN M. WILSON  
507-372-8216