

# CERTIFICATE OF LOCATION OF GOVERNMENT CORNER

Southwest Corner of Section 13, Township 102N, Range 39W, 5th P.M.

STATE OF MINNESOTA, County of Nobles

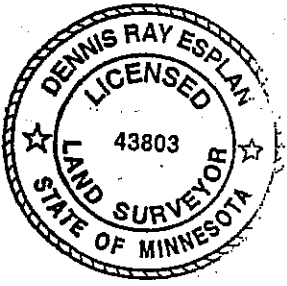
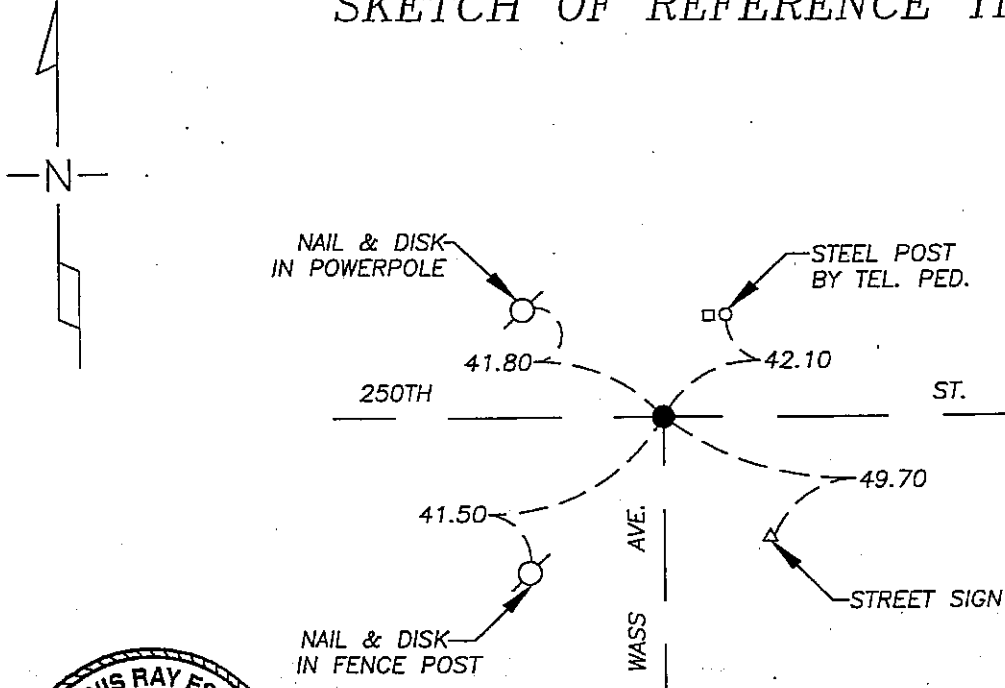
At the corner location shown on the sketch

On 9/21/05 found a 10" pointed stone stone, 18" deep and on center of road intersection.

left monument as found     lowered monument,     removed 1/2" iron stake

On 9/21/05 placed a 1" Iron Pipe with red survey cap #43803 over top of stone.

## SKETCH OF REFERENCE TIES



NAD 83 (1996)  
US STATE PLANE 1983  
MN SOUTH  
561441.57N  
2234687.23E

Statement of evidence relative to this corner location is on page 2.

I hereby certify that this document and the data contained herein was prepared by me or under my direct supervision.

Dennis Ray Esplan 10/29/05  
SIGNATURE DATE

MN. LICENSE NO. 43803

- Land Surveyor,     Professional Engineer
- County Surveyor,     County Engineer

OFFICE OF THE COUNTY RECORDER

I hereby certify that this document was filed in the Co. Recorder's Office at \_\_\_\_\_ on the \_\_\_\_\_ day of \_\_\_\_\_

County Recorder \_\_\_\_\_  
By \_\_\_\_\_, Deputy

DOCUMENT NO. \_\_\_\_\_

**Statement of Evidence**

1868 Original Township Subdivision was surveyed by Jewett & Howe.

1901, 1903 & 1953 Nobles Co. Hwy. Dept. records indicate a stone was found.

2005 Gerald Vickerman PLS and Jeremy Lund, with Zieske Land Surveying, excavated with a backhoe and found a 10" pointed stone, 18" deep and at center of road intersection. Crew placed a 1" iron pipe with red survey cap #43803 over top of stone.

