

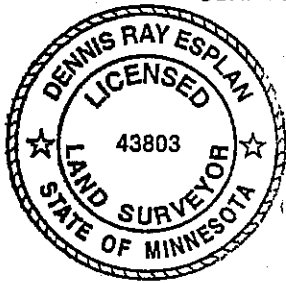
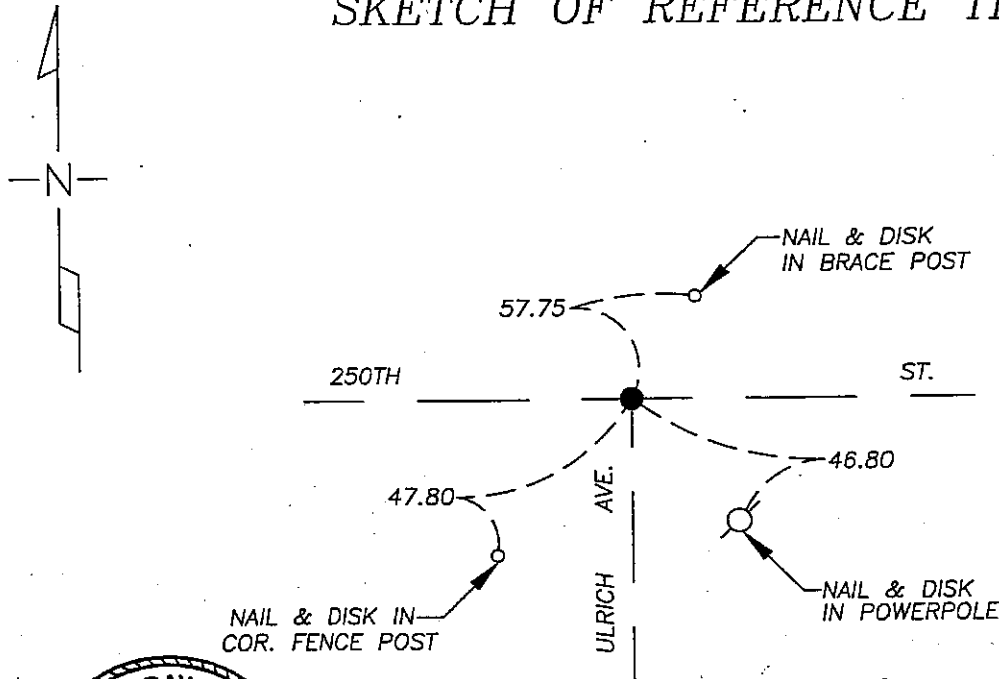
CERTIFICATE OF LOCATION OF GOVERNMENT CORNER

Southwest Corner of Section 14, Township 102N, Range 39W, 5th P.M.
STATE OF MINNESOTA, County of Nobles

At the corner location shown on the sketch

- On 9/21/05 found a 60d spike at road surface, excavated below and found a 10" pointed stone, 2.5' deep and on center of road intersection.
 - left monument as found
 - lowered monument,
 - removed 1/2" iron stake
- On 9/21/05 placed a 1" Iron Pipe with red survey cap #43803 over top of stone.

SKETCH OF REFERENCE TIES



NAD 83 (1996)
 US STATE PLANE 1983
 MN SOUTH
 561605.68N
 2249414.66E
 2

Statement of evidence relative to this corner location is on page 2.

I hereby certify that this document and the data contained herein was prepared by me or under my direct supervision.

Dennis Ray Esplan 10/29/05
 SIGNATURE DATE

MN. LICENSE NO. 43803

- Land Surveyor, Professional Engineer
- County Surveyor, County Engineer

OFFICE OF THE COUNTY RECORDER

I hereby certify that this document was filed in the Co. Recorder's Office at _____ on the

_____ day of _____

County Recorder _____
By _____, Deputy

DOCUMENT NO. _____

Statement of Evidence

1868 Original Township Subdivision was surveyed by Jewett & Howe.

1901 & 1903 Nobles Co. Hwy. Dept. records indicate a stone was found.

1913 Nobles Co. Hwy. Dept. records indicate a stone was set.

2005 Gerald Vickerman PLS and Jeremy Lund, with Zieske Land Surveying, found a 60d spike at road surface, excavated below and found a 10" pointed stone 2.5' deep and at center of road intersection. Placed 1" iron pipe with red survey cap #43803 over top of stone.

