

# CERTIFICATE OF LOCATION OF GOVERNMENT CORNER

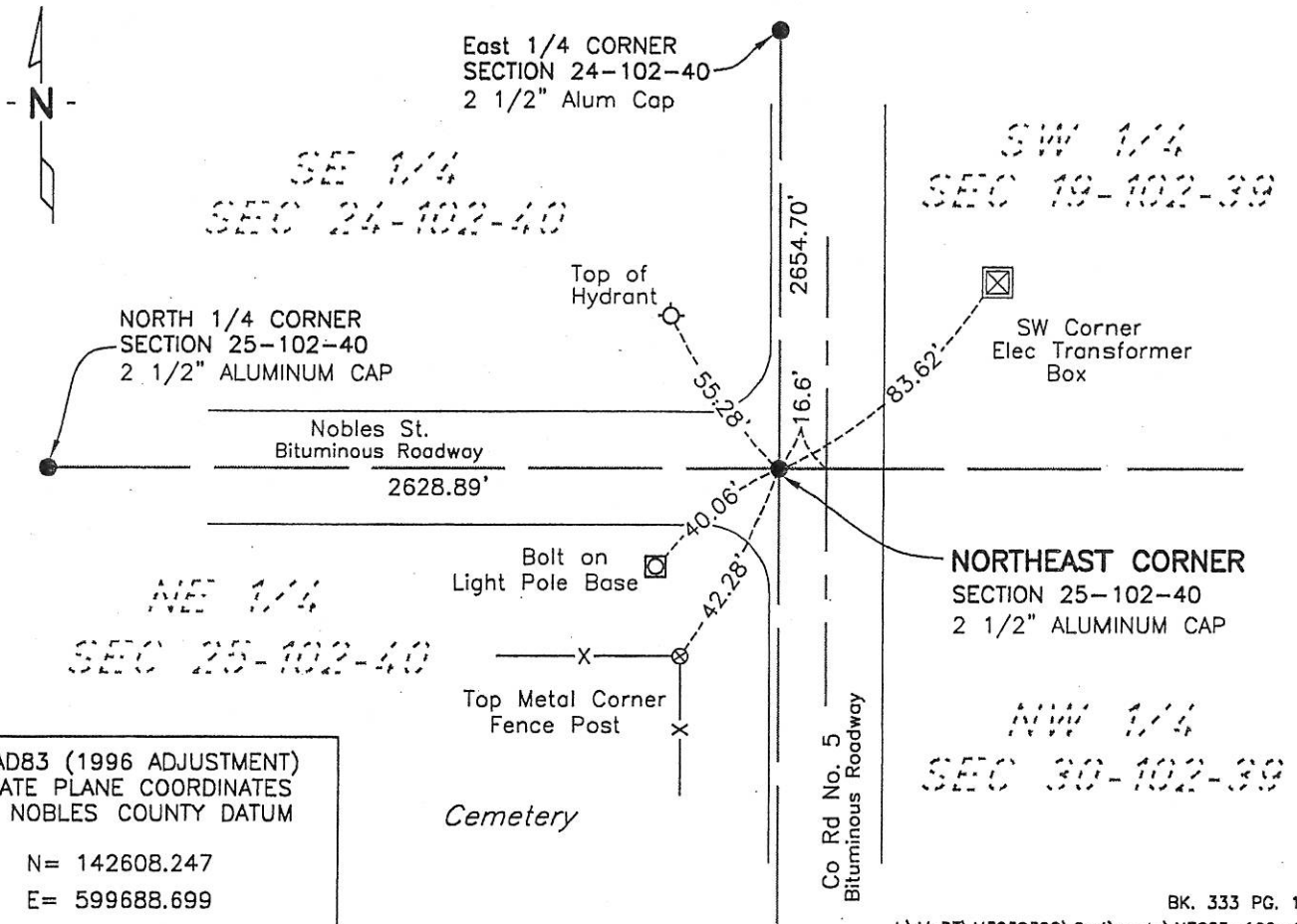
NORTHEAST Corner of Section 25, Township 102, Range 40, 5th P.M.

STATE OF MINNESOTA, County of NOBLES

At the corner location shown on the sketch:

- On 6-5-07 found a 2 1/2" ALUMINUM CAP IN BITUMINOUS 16.6' WEST  
DATE  
 OF THE CENTERLINE OF COUNTY ROAD NO. 5
  - left monument as found,  lowered monument,  removed monument (explain)
- On \_\_\_\_\_  
DATE

### SKETCH OF REFERENCE TIES



NAD83 (1996 ADJUSTMENT)  
 STATE PLANE COORDINATES  
 NOBLES COUNTY DATUM

N= 142608.247  
 E= 599688.699

BK. 333 PG. 10  
 I:\MnDT\M3239399\Cad\certs\NEC25-102-40

Statement of evidence relative to this corner location is on back of page.

I hereby certify that this document and the data contained herein was prepared by me or under my direct supervision.

Joseph A. Haefner 6-28-2007  
JOSEPH A. HAEFNER DATE

Registration No. 43909  
 Land surveyor,  Professional Engineer  
 County Surveyor,  County Engineer

OFFICE OF THE COUNTY RECORDER  
 County of \_\_\_\_\_

I hereby certify that this document was filed in the Co. Recorders office at \_\_\_\_M. on the \_\_\_\_\_ day of \_\_\_\_\_ A.D., 20\_\_\_\_  
 County Recorder \_\_\_\_\_  
 By \_\_\_\_\_, Deputy  
 DOCUMENT NO. \_\_\_\_\_

Statement of Evidence

Northeast Corner Section 25, Township 102 North, Range 40 West

- 1867 -T.B. Walker, U.S. Deputy Surveyor, his notes read: "North between sections 25 & 30, Var. 11°30'E" @ 80.00 chs "point for Cor 24, 25, 19 & 30 post in mound", no ties
- 14 Aug 1891 -Nobles County Recorder's Office, Surveyor's Record, Volume A-2, Page 16 by Milton S. Smith, County Surveyor, for a survey of NW ¼ Section 30-102-39, shows a stone monument at the NW corner (NE Corner Section 25-102-40)
- 25 Aug 1891 -Nobles County Recorder's Office, Surveyor's Record, Volume A-2, Page 20 by Milton S. Smith, County Surveyor, for a survey of Section 30-102-39, shows a stone monument at the NW corner (NE Corner Section 25-102-40)
- 1945 -Nobles County Highway Department, Construction plans for S.P. 53-514-01, shown a stone at the corner. The stone is shown to be 17' left of sta 681+28.75
- 1948 -Nobles County Highway Department records show that a stone was found and an iron pin was placed at this corner.
- 1965 -Nobles County Highway Department records show an iron pin was found at this corner.
- 13 Sep 1982 - Northland Engineers & Surveying, Inc., File No. 82011, Recorded as Document No. 215480, for a survey of Chichago, Rock Island & Pacific Railroad Monumentation, states "found monument (3/4" iron rod in bituminous pavement)"
- 18 July 1995 -Madsen Land Surveying Inc., Survey File No. 95110, for a survey in Section 24, states "found 5/8" rod (2" deep)"
- 29 April 1998 -City of Worthington GPS survey, "found ¾" I.R., Replaced with a 5/8" x 24" I.R. w/Alum Cap in Bit Paving"
- 9 Jan 2006 -Zieske Land Surveying Inc., Project No. N 0514 S, for a survey in Section 25, states "5/8" iron stake in place"
- 9 May 2007 -Bolton & Menk, Inc., survey crew found a 2 ½" aluminum cap & iron 16.6' west of the centerline of County Road No. 5 and in the centerline of Nobles Street.
- The written evidence appears to be tied to the 1891 Smith survey and that this evidence is supported by the occupational and collateral evidence which suggest that this is a reasonable location as to the corner. Additional information regarding the preparation of this certificate can be obtained by contacting: Bolton & Menk, Inc., 219 North Main Street, Fairmont, MN 56013