

# CERTIFICATE OF LOCATION OF GOVERNMENT CORNER

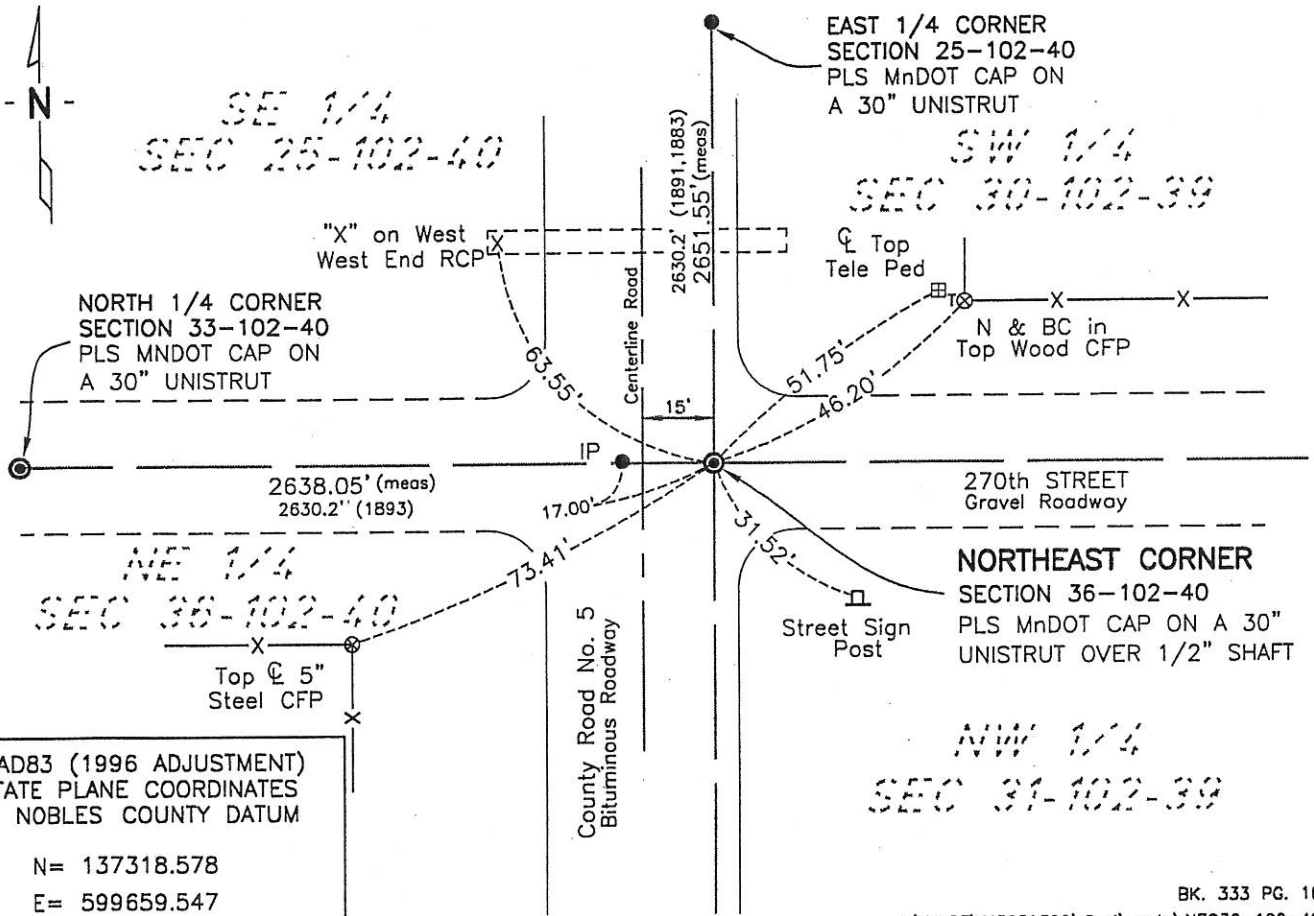
NORTHEAST Corner of Section 36, Township 102, Range 40, 5th P.M.

STATE OF MINNESOTA, County of NOBLES

At the corner location shown on the sketch:

- On 6-20-07 found a 1/2" IRON SHAFT w/CAP 15' WEST OF THE CENTERLINE OF COUNTY ROAD NO. 5  
DATE
- left monument as found,  lowered monument,  removed monument (explain)
- On 6-27-07 placed a PLS MnDOT CAP ON 30" UNISTRUT OVER SHAFT  
DATE

## SKETCH OF REFERENCE TIES



NAD83 (1996 ADJUSTMENT)  
 STATE PLANE COORDINATES  
 NOBLES COUNTY DATUM

N= 137318.578  
 E= 599659.547

BK. 333 PG. 16  
 I:\MnDT\M3239399\Cad\certs\NEC36-102-40

Statement of evidence relative to this corner location is on back of page.

I hereby certify that this document and the data contained herein was prepared by me or under my direct supervision.

*Joseph A. Haefner*  
 JOSEPH A. HAEFNER  
 DATE 6-28-2007

Registration No. 43909

- Land surveyor,  Professional Engineer
- County Surveyor,  County Engineer

OFFICE OF THE COUNTY RECORDER  
 County of \_\_\_\_\_

I hereby certify that this document was filed in the Co. Recorders office at \_\_\_\_\_ M. on the \_\_\_\_\_ day of \_\_\_\_\_ A.D., 20\_\_\_\_

County Recorder \_\_\_\_\_

By \_\_\_\_\_, Deputy

DOCUMENT NO. \_\_\_\_\_

Statement of Evidence

Northeast Corner Section 36, Township 102 North, Range 40 West

- 1867 -T.B. Walker, U.S. Deputy Surveyor, his notes read: "North between sections 31 & 36, Var. 11°30'E" @ 80.00 chs "point for Cor 25, 36, 30 & 31 for which W.C. 6 chs. north post in mound", no ties
- 25 Aug 1891 -Nobles County Recorder's Office, Surveyor's Record, Volume A-2, Page 20 by Milton S. Smith, County Surveyor, for a survey of Section 30-102-39, shows an iron bolt at the SW corner (NE Corner Section 36-102-40) a distance of north 40.16 chs (2650.56') is shown to the corresponding quarter section corner.
- 26 Aug 1893 -Nobles County Recorder's Office, Surveyor's Record, Volume A-2, Page 126-127 by Milton S. Smith, County Surveyor, for a survey of the Sections 25 & 36, states "NE Cor Sec 36 Iron Bolt in mound also original stake" distances of west 2630.2' and north 2650.6' are shown to the corresponding quarter section corner.
- 1945 -Nobles County Highway Department, Construction plans for S.P. 53-514-01, shows the corner 17' right of sta 628+39.3
- 8 Nov 1912 -Nobles County Recorder's Office, Surveyor's Record, Volume B, Page 38, by William A. Saxon, County Surveyor, for a survey of State Road along the east side of Sections 36, shows the section corner, there is no mention of what type of monument is in-place.
- 9 May 2007 -Bolton & Menk, Inc., survey crew survey crew found a ½" shaft w/cap 15' east of the centerline of County Road No. 5 and a ½" shaft 2' west of the centerline of County Road No 5, a distance of north 2651.55' was measured from the easterly shaft to the corresponding quarter section corner.
- 28 June 2007 -Bolton & Menk, Inc., survey crew set a PLS MnDot Cap on a 30" Unistrut over the easterly shaft.

The evidence appears to be conclusive back to the 1945 highway plans the evidence is supported by the occupational and collateral evidence and the fact that the measurement data from the 1891, 1893, and 2007 are close considering the time span therefore, the easterly shaft (now PLS MnDOT monument) is a reasonable location as to the corner. Additional information regarding the preparation of this certificate can be obtained by contacting: Bolton & Menk, Inc., 219 North Main Street, Fairmont, MN 56013.