

# CERTIFICATE OF LOCATION OF GOVERNMENT CORNER

West 1/4 Corner of Section 2, Township 102N, Range 39W, 5th P.M.

STATE OF MINNESOTA, County of Nobles

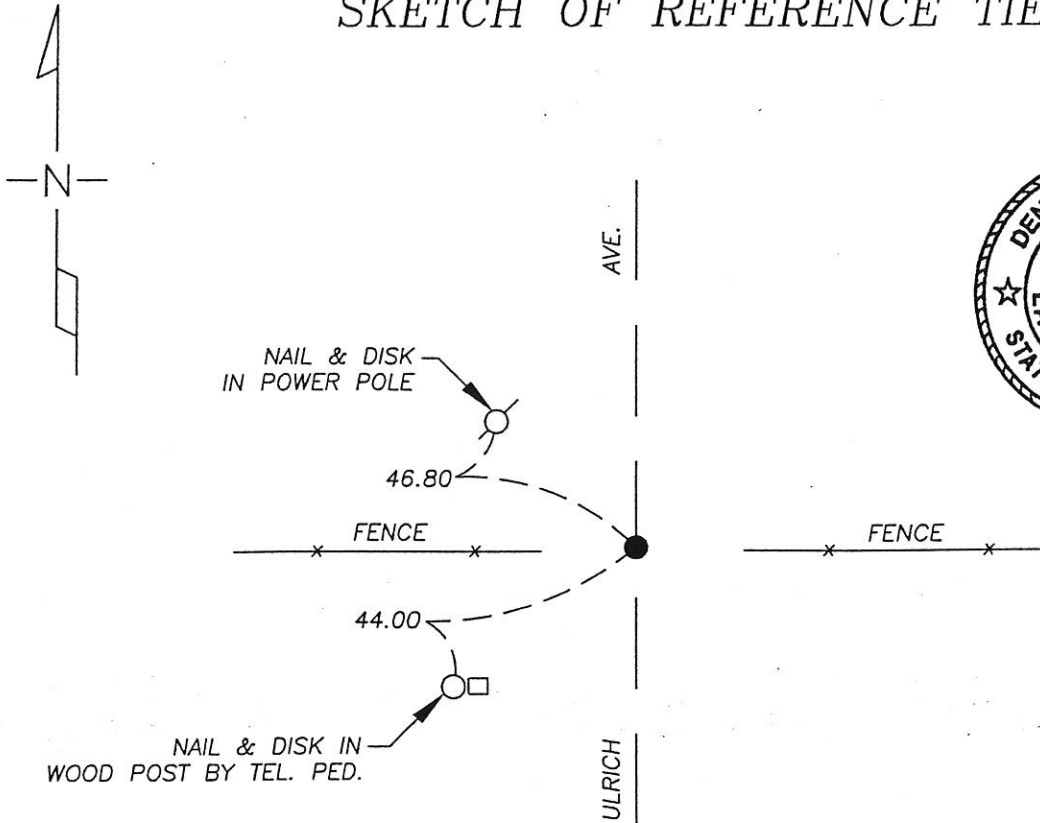
At the corner location shown on the sketch

On 9/15/05 found a 12" stone 3' deep in line with fence West and 3' north of fence east.

left monument as found     lowered monument,     removed monument (explain)

On 9/15/05 placed a 1" Iron Pipe with red survey cap #43803 at top of stone.

## SKETCH OF REFERENCE TIES



NAD 83 (1996)  
US STATE PLANE 1983  
MN SOUTH  
574801.94N  
2229641.84E

Statement of evidence relative to this corner location is on page 2.

I hereby certify that this document and the data contained herein was prepared by me or under my direct supervision.

Dennis Ray Esplan 10/29/05  
SIGNATURE DATE

MN. LICENSE NO. 43803

- Land Surveyor,     Professional Engineer
- County Surveyor,     County Engineer

OFFICE OF THE COUNTY RECORDER

I hereby certify that this document was filed in the Co. Recorder's Office at \_\_\_\_\_ on the

\_\_\_\_\_ day of \_\_\_\_\_

County Recorder \_\_\_\_\_

By \_\_\_\_\_, Deputy

DOCUMENT NO. \_\_\_\_\_

Statement of Evidence

1868 Original Township Subdivision was surveyed by Jewett & Howe.

1894 Nobles Co. Hwy. Dept. records indicate a stone was set.

1902 Nobles Co. Hwy. Dept. records indicated a stone was found.

2005 Gerald Vickerman PLS and Jeremy Lund, with Zieske Land Surveying, excavated with a backhoe and found a 12" stone, 3' deep. Crew placed a 1" iron pipe with red survey cap #43803 over top of stone.

