

CERTIFICATE OF LOCATION OF CORNER

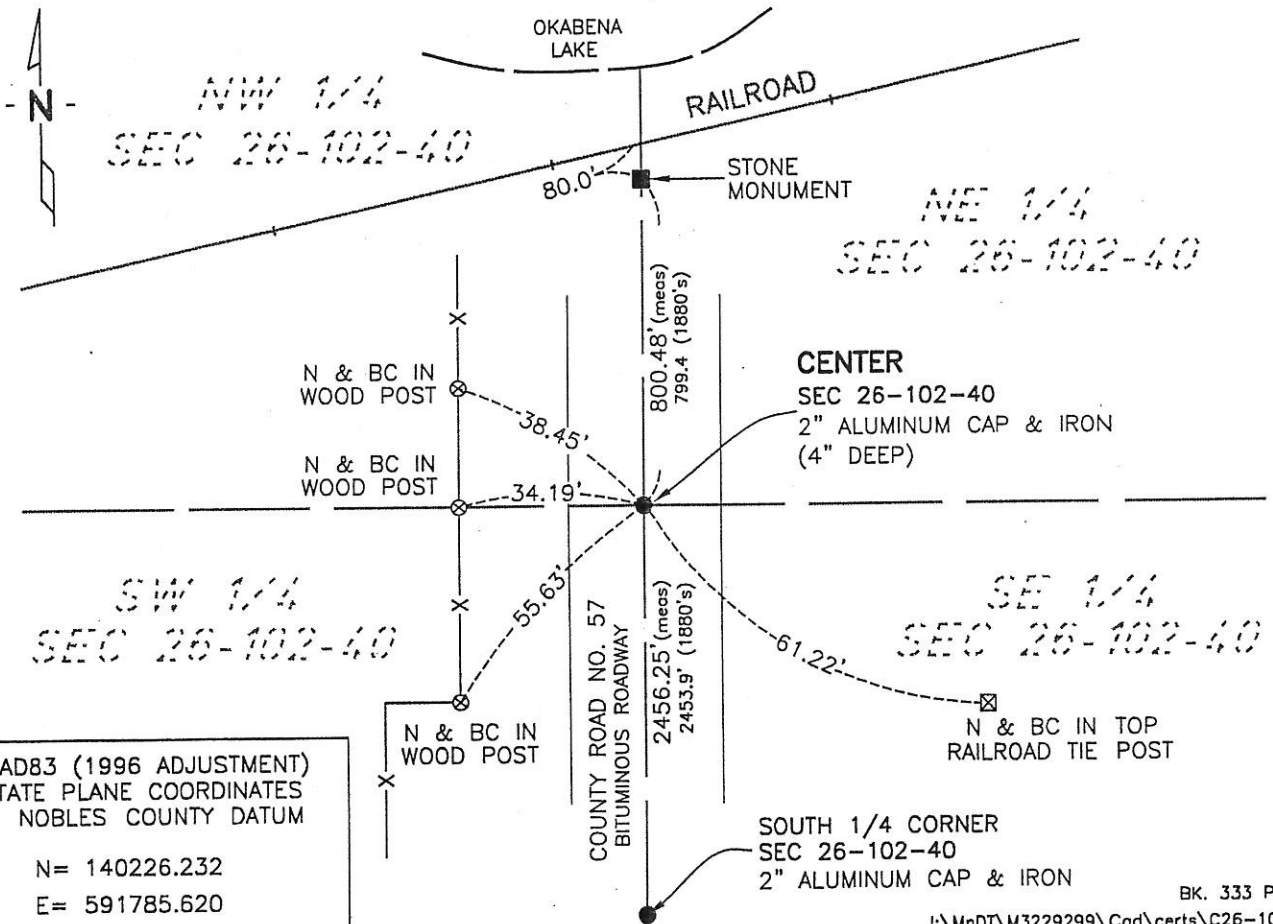
CENTER Corner of Section 26, Township 102, Range 40, 5th P.M.

STATE OF MINNESOTA, County of NOBLES

At the corner location shown on the sketch:

- On 7-26-06 found a 2" ALUMIN CAP & IRON AT CENTERLINE BIT SURFACE
DATE
(4" DEEP) ON LINE WITH SOUTH 1/4 AND A FOUND STONE NEAR RR TRACKS
 - left monument as found, lowered monument, removed monument (explain)
- On _____
DATE

SKETCH OF REFERENCE TIES



NAD83 (1996 ADJUSTMENT)
STATE PLANE COORDINATES
NOBLES COUNTY DATUM

N= 140226.232
E= 591785.620

BK. 333 PG. 32

I:\MnDT\M3229299\Cad\certs\C26-102-40

Statement of evidence relative to this corner location is on back of page.

I hereby certify that this document and the data contained herein was prepared by me or under my direct supervision.

Joseph A. Haepner
 JOSEPH A. HAEPNER
 DATE 6-28-2007

Registration No. 43909

- Land surveyor, Professional Engineer
- County Surveyor, County Engineer

OFFICE OF THE COUNTY RECORDER

County of _____

I hereby certify that this document was filed in the Co. Recorders office at ____M. on the _____ day of _____ A.D., 20__

County Recorder _____

By _____, Deputy

DOCUMENT NO. _____

Statement of Evidence

Center Section 26, Township 102 North, Range 40 West

George G. Howe, U.S. Deputy Surveyor, surveyed Township 102 North, Range 40 West in 1868. The Center of Section 26 was not set during the original survey. The following evidence will show the corner has been established and perpetuated for over 120 years. Therefore, this certificate is being prepared to further perpetuate its location and for guidance of future surveyors.

1880's -Nobles County Recorder's Office, Surveyor's Record, Volume A-2, Page 196, for a survey of the Section 26 shows a stone on the north - south 1/4 line 799.4' north of the center and 80' south of the in-place railroad tracks, a distance of south 2453.9' is also shown to the corresponding quarter section corner. No monument at the center of Section 26 is shown.

6 June 1979 -Martin Land Surveying, Job No. 79031, for a survey in Section 26, shows a survey monument found in place at this corner.

18 Jan 1980 -Nobles County Recorder's Office, Certificate of Location of Government Corner, filed January 18, 1980 in Document No. 208019, by Timothy J. Lehn, states "I used a proration factor of 1.0009 time Smith's distances based on his measurement from the south quarter corner to the trunk highway on my measurement of the same down the centerline of county road 57" a 1/2" iron pipe was set flush in asphalt with cap.

1993 -Madsen Land Surveying Inc, Survey File No. 93116, for a survey in Section 26, states "found 5/8" Rod (2" deep)

30 April 1998 -City of Worthington GPS survey, "found 3/4" iron rod; set alum cap on 5/8" iron rod (surface)"

20 July 2006 -Minnesota Department of Transportation, survey crew found an aluminum cap on an iron rod at the centerline of bituminous surface 4" deep.

5 June 2007 -Bolton & Menk, Inc, survey crew found the above referenced aluminum cap and a stone monument 80' south of the in-place railroad tracks. Said aluminum cap is on line with the south quarter corner and said stone. A distance of south 2456.31' was measured to the south quarter corner and a distance of north 800.48' was measured to said stone.

The evidence is conclusive and continuous back to the 1880's survey in which the north - south quarter line was run and the center of section was established, the measurement data from the 1880's and 2007 are in agreement considering the time span, therefore, the above referenced aluminum Cap is the best evidence of the corner location and the location of the north - south quarter line. Additional information regarding the preparation of this certificate can be obtained by contacting: Bolton & Menk, Inc., 219 North Main Street, Fairmont, MN 56013.