

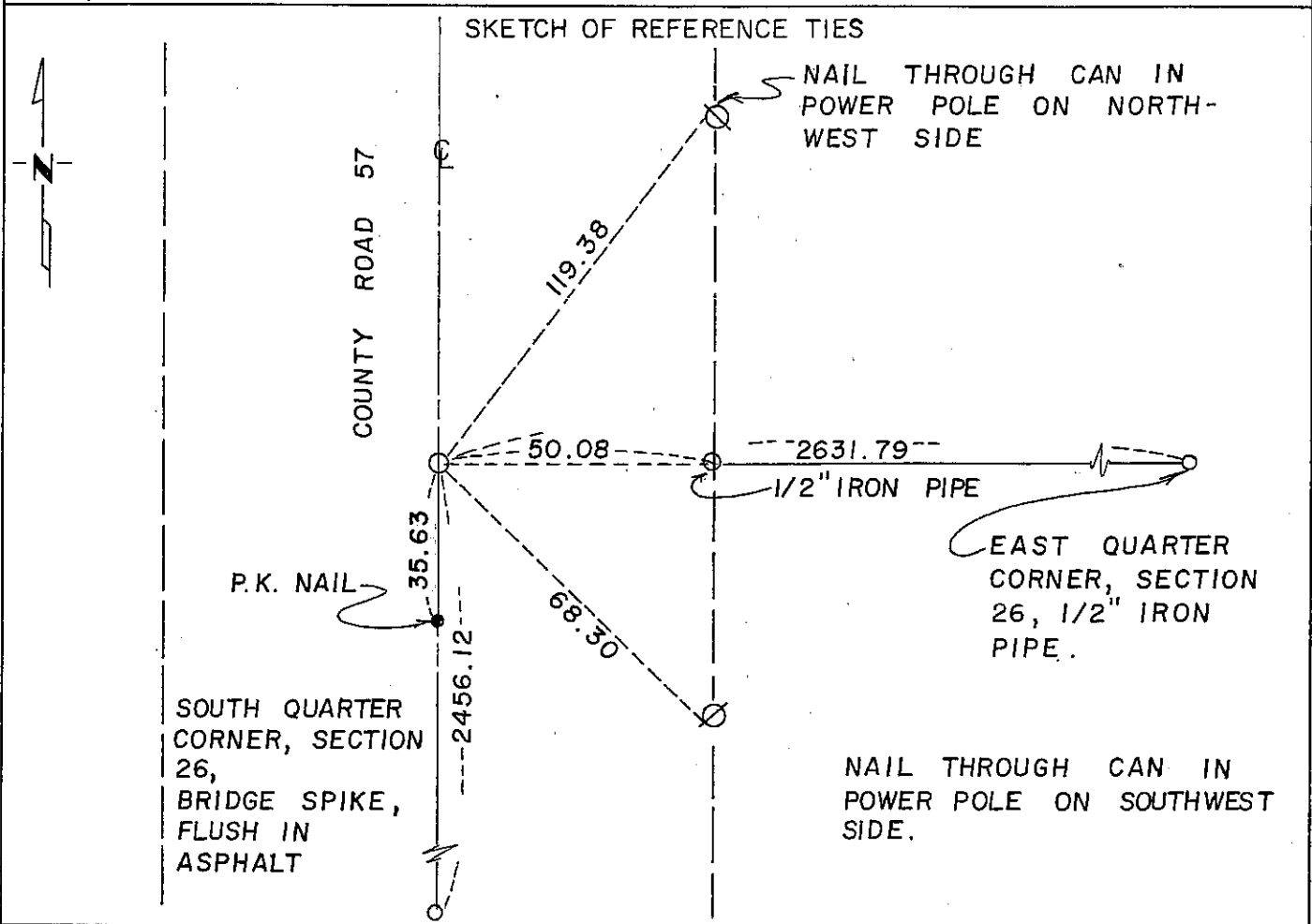
CERTIFICATE OF LOCATION OF GOVERNMENT CORNER

CENTER Corner of Section 26, Township 102, Range 40, 5 P.M.

STATE OF MINNESOTA, County of NOBLES

At the corner location shown on the sketch:

- On _____ found a _____
DATE
- left monument as found, lowered monument, removed monument (explain)
- On MAY 23, 1979 placed a 1/2" IRON PIPE FLUSH IN ASPHALT WITH CAP
DATE



Statement of evidence relative to this corner location is on back of page.

I hereby certify that this document and the data contained herein was prepared by me or under my direct supervision.

[Signature] Jan. 18, 1980
SIGNATURE DATE

Registration No. 12253

- Land Surveyor, Professional Engineer
- County Surveyor, County Engineer

OFFICE OF THE COUNTY RECORDER
County of Nobles

I hereby certify that this document was filed in the ~~Reg. of Deeds~~ ^{County Recorder's} office at 11:35 A. M. on the 18th day of January A.D., 1980
County Recorder

[Signature]
By _____, Deputy

DOCUMENT NO. 208019

Statement of Evidence: Center Section 26, T. 102, R. 40, Nobles County

Since this section is fractional and the North Quarter and Northwest Corners fall in West Lake Okabena, I have set the center as the Southwest Corner of Government Lot 4 and file this certificate as notice of such and for the guidance of future surveys.

Since East Lake Okabena labeled has been dried up for years, the East Quarter Corner is now recognized too.

April 10, 1900 - Milton S. Smith, County Surveyor, laid out a great portion of the East Half of Section 26.

June, 1914 - William A. Saxon, County Surveyor, laid out the East Okabena Lake bed, (dried up) in an Auditor's Plat.

I used a proration factor of 1.0009 times Smith's distances based on his measurement from the South Quarter Corner to the trunk highway on my measurement of the same down the centerline of County Road 57.

The current work was performed by : Hagemeister, Ebeling & Lehn, Inc.
921 4th Avenue, Suite 14
Worthington, MN 56187

Tract M.L. Compared J.S.
Photo J.S.
Fee N.C.