

# CERTIFICATE OF LOCATION OF GOVERNMENT CORNER

EAST QUARTER Corner of Section 14, Township 102N, Range 40W, 5TH P.M.

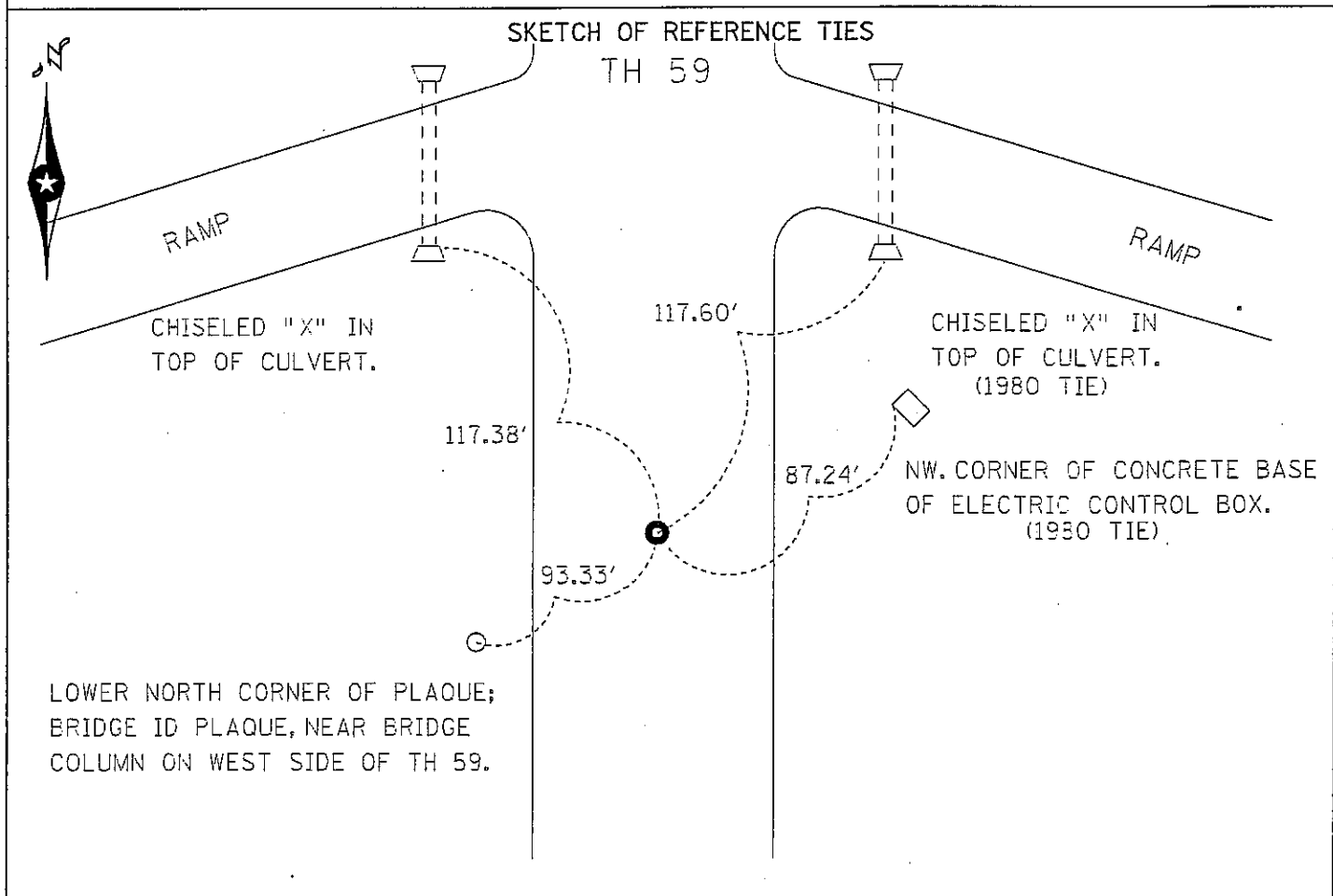
STATE OF MINNESOTA, County of NOBLES

At the corner location shown on the sketch

ON APRIL 1997 found BRASS FLUG.

left monument as found,  lowered monument,  removed monument (explain)

ON \_\_\_\_\_ placed a \_\_\_\_\_



Statement of evidence relative to this corner is on back of page

I hereby certify that this document and the data contained herein was prepared by me or under my direct supervision.

Daniel J. Domsain SIGNATURE 5/24/98 DATE

Registration No. 23037

- Land surveyor,  Professional Engineer
- County Surveyor,  County Engineer

OFFICE OF THE COUNTY RECORDER

County of Nobles

I hereby certify that this document was filed in the Co. Recorders office at 9:05 A.M. on the 24th day of August A.D., 1998

County Recorder Jayce Howard  
By \_\_\_\_\_, Deputy

DOCUMENT NO. 272485

## STATEMENT OF EVIDENCE

- Sept. 25, 1868 R.H.L. Jewett and G.G. Howe Original Public Land Survey notes read, "Set post in mound with pits for witness corner to 1/4 Sec. Corner, 2 chains South of true corner."
- 1894 Nobles County Highway land corner records read, "Stone in 1894 (Set)."
- Nov. 8, 1902 M.S. Smith, County Surveyor, notes on a drawing of a survey read, "Old stone." Measurements are 2612 feet to Northeast 23, and 2646.6 feet to "Old stone" at Center Section 14.
- Oct. 29, 1914 Wm. A. Saxon County Surveyor, made a survey in Section 13 and drawing of survey indicates measurement of 2657 feet to Center Section 13, 2614 feet to Northeast Corner Section 23 and 2610 feet to Northeast Corner Section 14.
- Oct. 19, 1927 Minnesota Highway Department field notes indicate, placed a railroad spike at assumed 1/4 corner at L.P.O.T. 77+74.5.
- May 20, 1929 Minnesota Highway Department field notes read, "P.O.T. 77+74.5 = 1/4 corner Stone inplace."
- 1930's G. D. McMurtey, County Surveyor, made a survey in Section 14 for airport, "railroad spike" marked land corner location. Measurement is 2646.6 feet to original post and stone Center Section 14.
- 1935 Nobles County Highway Department land corner records read, "Iron pin in 1935."
- 1955 Minnesota Highway Department Grading and Paving plans read, "Stone inplace at P.O.T." P.O.T. is Station 77+74.5.
- 1960 Minnesota Highway Department location notes indicate "Brass Plug" inplace at 1/4 Corner = P.O.T. 77+74.5.
- May 5, 1980 Minnesota Department of Transportation field survey crew found and tied in location of Brass plug.
- 1980 The concrete pavement on TH 59 was broken, removed, and recycled. After pavement was removed the Minnesota Department of Transportation, Windom office, searched for land corner.
- Aug. 4, 1980 Minnesota Department of Transportation field crew using a tractor backhoe found a 1.7 foot by 1.5 foot by 0.75 foot grey granite stone 1.5 feet below bituminous surface that was placed in 1929, and 0.5 feet below what appeared to be an old grass line. Stone had a 1/2 inch in diameter by 3/8 inch deep hole in top. Also found a 7/8 inch by 1 1/2 inch iron pin in proximity above hole in stone.
- Sept. 10, 1980 Minnesota Department of Transportation field crew placed brass plug in concrete surface above hole in stone using previous ties.
- The inplace location of the brass plug is compatible with the occupation lines within the section. An analysis of the Statement of Evidence and the field measurements indicate that the brass plug is in a reasonable location. I therefore accept the monument as the location of the land corner.
- April 1998 The above history is from the MnDot Windom office. The brass plug above the stone is approximately 2.5' southwest of the old brass plug at P.O.T. 77+74.5. I believe that the true corner is the brass plug above the stone and not the old brass plug at P.O.T. 77+74.5.

TRACKED	<i>J</i>	COMPARED	<i>dm</i>
PHOTO	<i>pw</i>		
FEE	<i>nc</i>		