

CERTIFICATE OF LOCATION OF GOVERNMENT CORNER

EAST QUARTER Corner of Section 15, Township 102 N, Range 40 W, 5th P.M.

STATE OF MINNESOTA, County of NOBLES

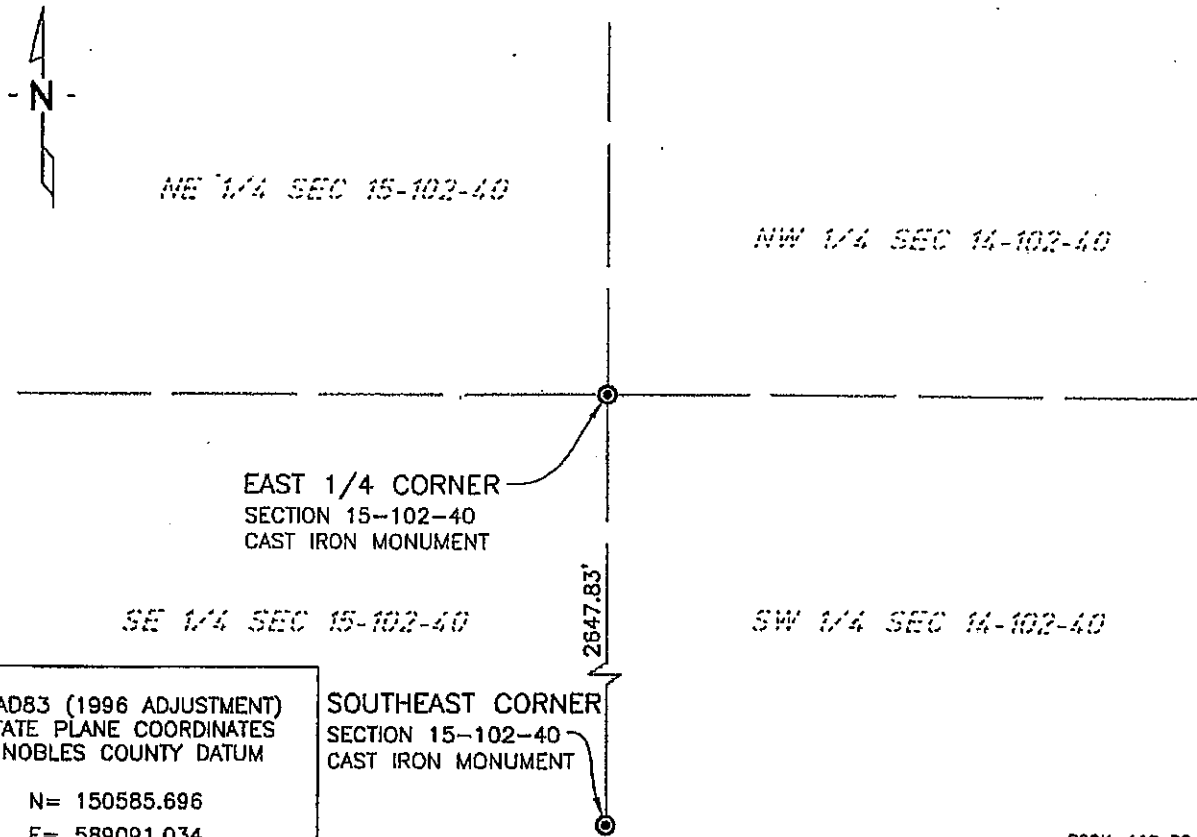
At the corner location shown on the sketch:

On 7/16/03 found a CAST IRON MONUMENT
DATE

left monument as found, lowered monument, removed monument (explain)

On _____ placed a _____
DATE

SKETCH OF REFERENCE TIES



NAD83 (1996 ADJUSTMENT)
STATE PLANE COORDINATES
NOBLES COUNTY DATUM

N= 150585.696
E= 589091.034

SOUTHEAST CORNER
SECTION 15-102-40
CAST IRON MONUMENT

BODK: 110 PG. 43
I:\NOBLS\CERTIFICATES\2005\CAD\E15-102-40

Statement of evidence relative to this corner location is on back of page.

I hereby certify that this document and the data contained herein was prepared by me or under my direct supervision.

Janele Fowlds 4-24-06
JANELE FOWLDS DATE

Registration No. 26748

Land surveyor, Professional Engineer
 County Surveyor, County Engineer

OFFICE OF THE COUNTY RECORDER

County of _____
I hereby certify that this document was filed in the Co. Recorders office at _____ M. on the _____ day of _____ A.D., 19____

County Recorder _____
By _____, Deputy

DOCUMENT NO. _____

Statement of Evidence

East Quarter Corner Section 15, Township 102 North, Range 40 West

Original Notes

- 1902 Nobles County Highway Department records show a stone monument.
- 1959 Nobles County Highway Department records show a stake, and also placed an iron pin.
- 1965 Nobles County Highway Department records show an iron pin with the following ties:
Nail & Disk in FE Post – Northwest 41.11'
Nail & Disk in Cor Fe Post – West 32.53'
Fe Post – Northeast 54.20'
- 1978 MN/DOT research this corner, found an iron pin. In talking to neighbors and no other disputing evidence found, this iron pin is accepted as the corner. A cast iron monument was placed over iron pin. The evidence was recorded on September 15. The ties are as follows:
Nail & Disk in FE Post – West 32.52'
Nail & Disk in FE Post – South 34.55'
Nail & Disk in Power Pole – Northeast 79.55'
- 1998 Field notes received by Madsen Land Surveying Inc., Fairmont, shows a cast iron monument was found on April 29, with the following ties:
SRP in Wood Post – Northeast 79.63
SRP in Wood FE Post – Northeast 54.57'
SRP in Wood FE Post – South 34.33'
Fence N & S – East 32.5'
Fence E & W – South 34.5'
- 2003 On July 16, Bolton & Menk, Inc., Mankato, found a cast iron monument 0.4 foot below surface.