

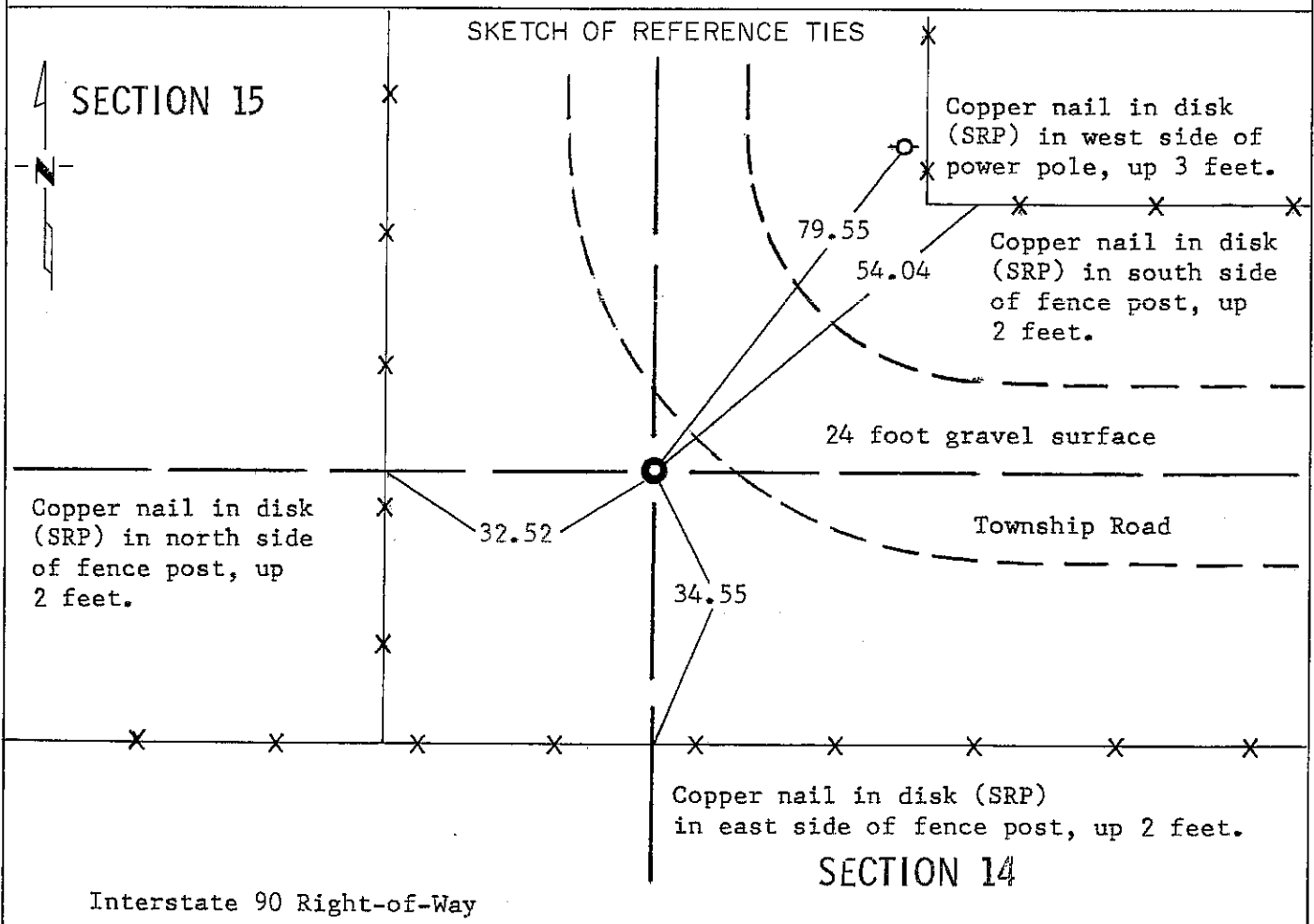
# CERTIFICATE OF LOCATION OF GOVERNMENT CORNER

EAST QUARTER Corner of Section 15, Township 102N, Range 40W, 5 P.M.

STATE OF MINNESOTA, County of NOBLES

At the corner location shown on the sketch:

- On May 1, 1978 found a iron pin, down 2.0 feet, at the intersection of  
DATE  
township road centerlines to the north and east.
  - left monument as found,  lowered monument,  removed monument (explain)
- On May 1, 1978 placed a M.H.D. cast iron monument, over the iron pin.  
DATE



Statement of evidence relative to this corner location is on back of page.

I hereby certify that this document and the data contained herein was prepared by me or under my direct supervision.

S. Eldon Lober Sept. 13, 1978  
SIGNATURE DATE

Registration No. 11933

- Land Surveyor,  Professional Engineer
- County Surveyor,  County Engineer

OFFICE OF THE COUNTY RECORDER

County of Nobles

I hereby certify that this document was filed in the Co. Recorders office at 10:55 A.M. on the 15th day of September A.D., 19 78

County Recorder Jayce Lemke

By \_\_\_\_\_, Deputy

DOCUMENT NO. 203807

Statement of Evidence:East  $\frac{1}{4}$  Cor. Sec. 15 T102N R40 Nobles

- September 25, 1868 - George G. Howe - The original Public Land Surveyor's notes read: "Set post in mound with pits for  $\frac{1}{4}$  section corner".
- November 8, 1902 - W. S. Smith - County Surveyor, survey record of Section 14 shows there is "Stone & Iron" at west quarter corner.
- 1902 - Notes from Nobles County Highway Department read: "Stone in 1902".
- 1959 - Notes from Nobles County Highway Department read: "Stake in 1959 placed iron pin".
- April 13, 1960 - E. Polesky - Minnesota Highway Department's survey crew on location for T.H. I-90 - "Found a 1 x 2 stake. Replaced with I.P.".
- 1965 - Notes from Nobles County Highway Department read: "Iron pin in 1965".
- March 28, 1978 - David Raley of the Minnesota Department of Transportation contacted the following farmers in the area of this land corner: James Kramer - age 60± and Bob Hansen - age 60±. Mr. Hansen has lived in the area all his life and Mr. Kramer has lived here 12 years. Neither knew of any surveys or property disputes affecting this land corner, and both consider the center-lines of the roads as the property lines. Mr. Kramer advised that this corner should be 14' north of the R/W fence. Mr. Hansen advised that there should be at least a stone at this location.
- The in-place location of the iron pin is compatible with the occupation lines within the section. An analysis of the Statement of Evidence and the field measurements indicate that the iron pin is in a reasonable location. I therefore accept the monument as the location of the land corner.
- For additional information, including field measurements and photographs, contact the Minnesota Department of Transportation in Windom.