

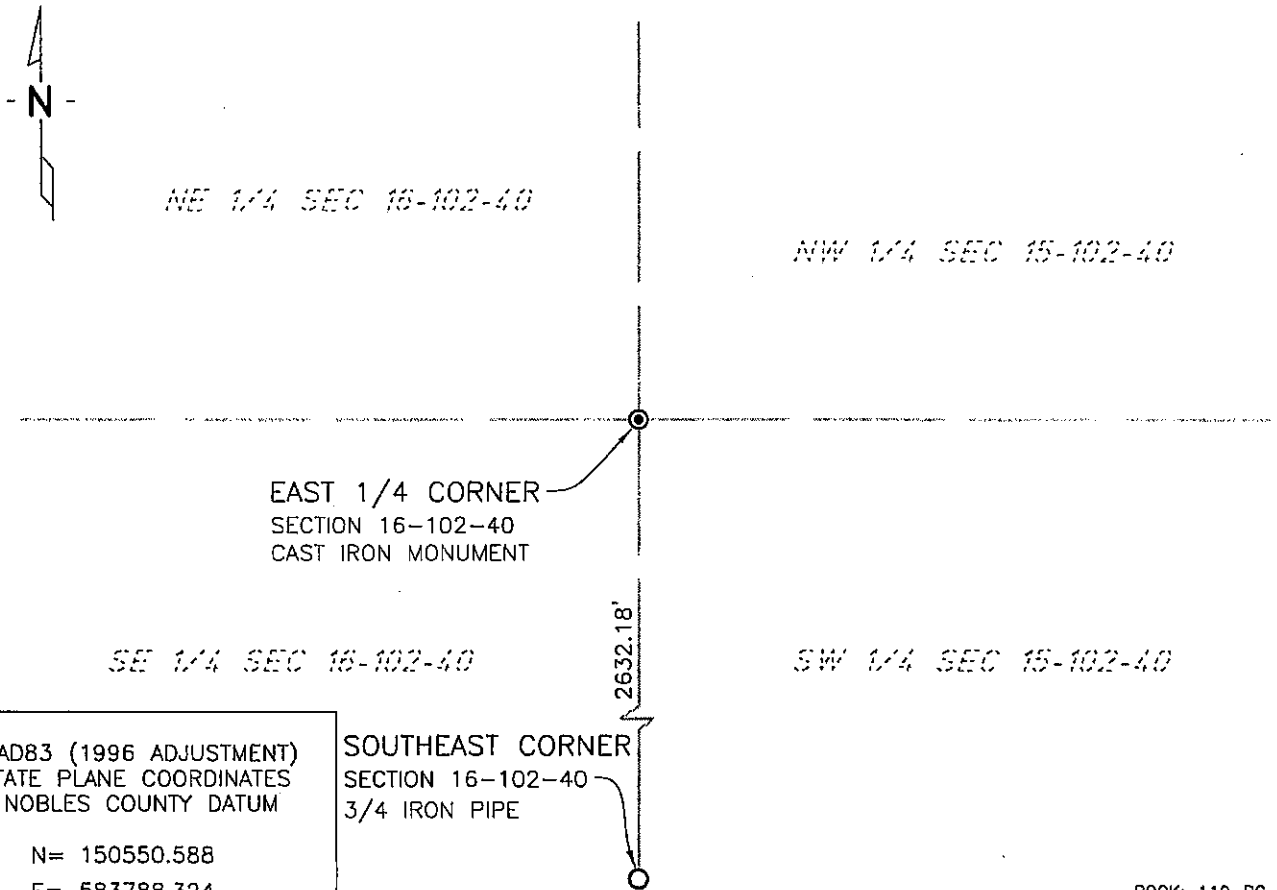
# CERTIFICATE OF LOCATION OF GOVERNMENT CORNER

EAST QUARTER Corner of Section 16, Township 102 N, Range 40 W, 5th P.M.  
STATE OF MINNESOTA, County of NOBLES

At the corner location shown on the sketch:

- On 7/16/03 found a CAST IRON MONUMENT  
DATE
- left monument as found,  lowered monument,  removed monument (explain)
- On \_\_\_\_\_ placed a \_\_\_\_\_  
DATE

### SKETCH OF REFERENCE TIES



BOOK: 110 PG. 43  
I:\NOBLS\CERTIFICATES\2005\CAD\E16-102-40

Statement of evidence relative to this corner location is on back of page.

I hereby certify that this document and the data contained herein was prepared by me or under my direct supervision.

Janele Fowlds 4-24-06  
JANELE FOWLDS DATE

Registration No. 26748

- Land surveyor,  Professional Engineer
- County Surveyor,  County Engineer

OFFICE OF THE COUNTY RECORDER

County of \_\_\_\_\_

I hereby certify that this document was filed in the Co. Recorders office at \_\_\_\_M. on the \_\_\_\_\_ day of \_\_\_\_\_ A.D., 19\_\_

County Recorder \_\_\_\_\_

By \_\_\_\_\_, Deputy

DOCUMENT NO. \_\_\_\_\_

Statement of Evidence

East Quarter Corner Section 16, Township 102 North, Range 40 West

Original Notes

- 1892 Nobles County Highway Department records show a stone monument.
- 1978 The DNR research this corner, found a stone 3.6' deep. Neighbors knew nothing of land corner and/or land disputes, with no disputing evidence the stone is accepted as location. The DNR place a cast iron monument over high point of stone. The ties are as follows:  
Nail & Disk in North side Sign Post – Northwest 34.46'  
Nail & Disk in North side of fence Post – Southeast 34.55'  
Brass plug At I-90 PI Sta 2201+95.8 – South 101.2'  
Nail & Disk in Fence Post – Southwest 7.80'
- 1998 Field notes received by Madsen Land Surveying Inc., Fairmont, shows a cast iron monument was found about 12" deep on North side I-90, with the following ties:  
Bottle cap in Wood Post – East-Southeast 34.48'  
Bottle cap in Wood Post – West-Southwest 18.45'  
R/W Post – West 3.20'  
R/W Fence E&W – South 5.2'
- 2003 On July 16, Bolton & Menk, Inc., Mankato, found a cast iron monument 0.3 foot below surface.