

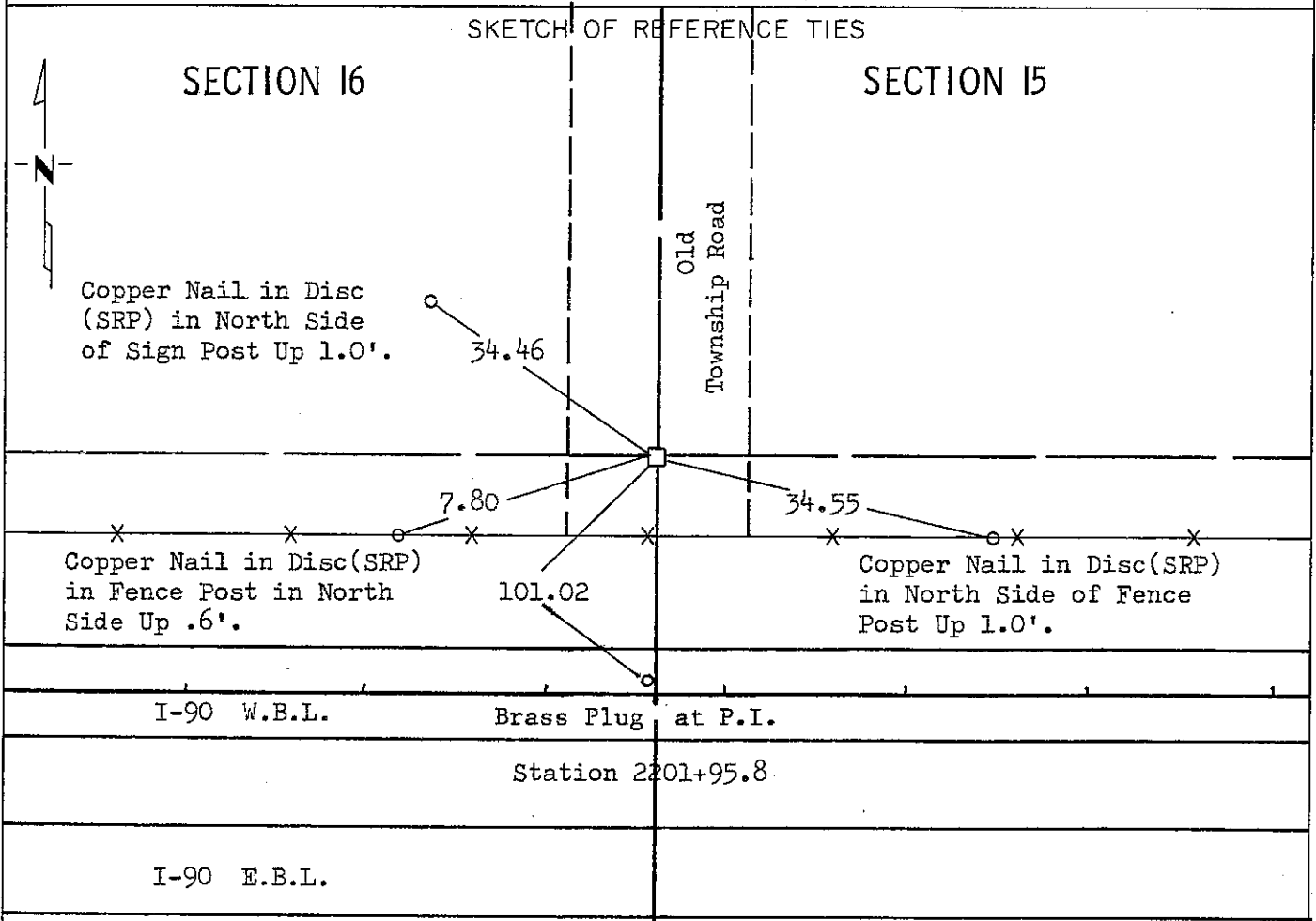
CERTIFICATE OF LOCATION OF GOVERNMENT CORNER

EAST QUARTER Corner of Section 16, Township 102N, Range 40W, 5 P.M.

STATE OF MINNESOTA, County of NOBLES

At the corner location shown on the sketch:

- On April 10, 1978 found a Field Stone 3.6 feet Below the Surface
DATE
- left monument as found, lowered monument, removed monument (explain)
- On May 1, 1978 placed a M. H. D. Cast Iron Monument Down .3 feet, Over
DATE
High Point on Stone.



Statement of evidence relative to this corner location is on back of page.

I hereby certify that this document and the data contained herein was prepared by me or under my direct supervision.

S. Eldon Lober SIGNATURE Sept 13, 1978 DATE

Registration No. 11933

- Land Surveyor, Professional Engineer
- County Surveyor, County Engineer

OFFICE OF THE COUNTY RECORDER

County of Nobles

I hereby certify that this document was filed in the Co. Recorders office at 11:15 A.M. on the 15th day of September A.D., 1978

County Recorder Joyce Lemke

By _____, Deputy

DOCUMENT NO. 203811

Statement of Evidence:East $\frac{1}{4}$ Sec. 16 T102N R40W Nobles

September 25, 1868 - G. G. Howe, the original Public Land Surveyor's notes read:
"Set post in mound with pits for $\frac{1}{4}$ section corner".

April 30, 1892 - Milton S. Smith - Nobles County Surveyor, " $\frac{1}{4}$ post on east is a stone set in mound by L. L. Palmer".

1892 - Notes from Nobles County Highway Department read: "Stone in 1892".

Unknown - Circa 1959 - Minnesota Highway Department's Survey party - "ass'd at E-W Fe line and centerline N-S road" placed spike.

March 28, 1978 - David Raley of the Minnesota Department of Transportation contacted Don Johnson - age 50± and Bennie Gerdes - age 50±. Neither man knew anything about this land corner. They knew of no property disputes or any surveys other than what the State has done.

An analysis of the Statement of Evidence and the field measurements indicate that the in-place location of the field stone provides a continuous chain of perpetuation of the original Public Land Survey corner.

For additional information, including field measurements and photographs, contact the Minnesota Department of Transportation in Windom.