

CERTIFICATE OF LOCATION OF GOVERNMENT CORNER

EAST QUARTER Corner of Section 17, Township 102N, Range 40W, 5TH P.M.

STATE OF MINNESOTA, County of NOBLES

At the corner location shown on the sketch :

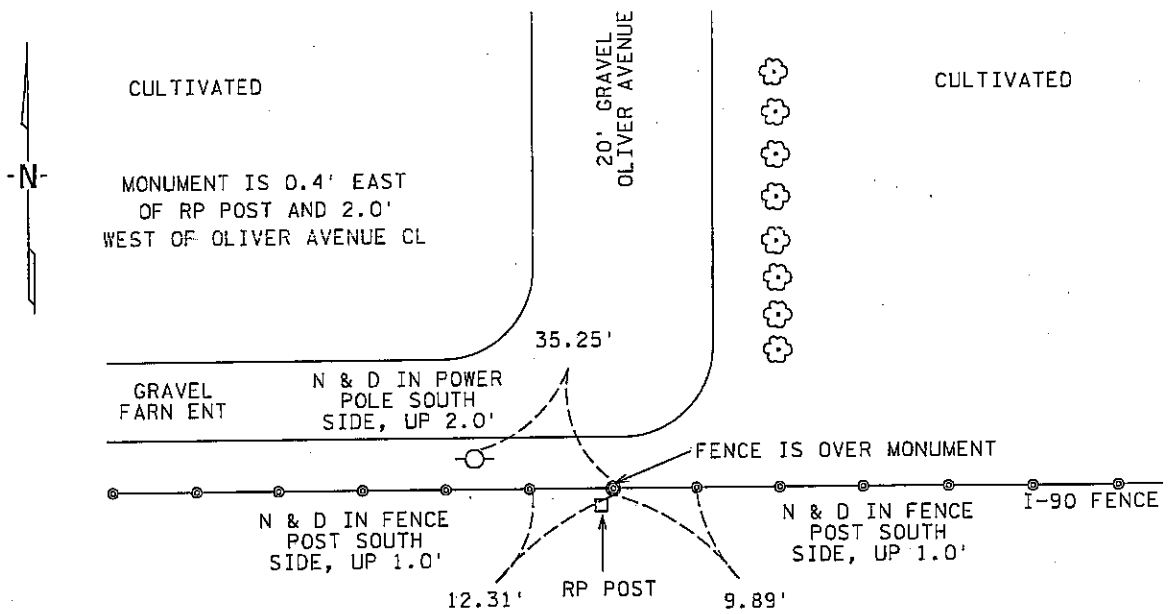
On 3 OCTOBER 2000 found MN D.O.T. CAST IRON MONUMENT

left monument as found, lowered monument, removed monument (explain)

On _____ set _____

Sketch of reference ties

SEC 16-102N-40W



8' BIT SHOULDER

14' CONCRETE

CL WBL I-90

SEC 17-102N-40W

Statement of evidence relative to this corner location is on back page

I hereby certify that this document and the data contained herein was prepared by me or under my direct supervision.

Signature: *[Handwritten Signature]* Date: *6 DEC 00*

Registration No. 22883
 Land Surveyor, Professional Engineer
 County Surveyor, County Engineer

OFFICE OF THE COUNTY RECORDER

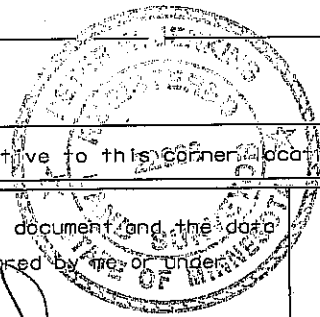
County of *Nobles*

I hereby certify that this document was filed in the Co. Recorders office at *8:40* A.M. on the *19th* day of *December, 2000* A.D.

County Recorder *[Handwritten Signature]*
By _____, Deputy

DOCUMENT NO. **281817**

TRACKED & COMPARED
PHOTO
FEE *MC*



Statement of Evidence:

EAST QUARTER CORNER
SECTION 17, TOWNSHIP 102 NORTH, RANGE 40 WEST
5th PRINCIPAL MERIDIAN, MINNESOTA

- 25 Sept. 1868 -R.H.L. Jewett & George G. Howe, U.S. Deputy Surveyors, "North bet. Sec's. 16 & 17" @ 40.00 chs. "Set post in mound with pits for 1/4 Sec. Cor." No ties.
- 25 July 1891 -Nobles County Recorder's Office, Surveyor's Record, Volume A-2, Page 8, by Milton S. Smith, County Surveyor, shows a stone at the West Quarter Corner of Sec. 16-102-40.
- 29 Apr. 1892 -Nobles County Recorder's Office, Surveyor's Record, Volume A-2, Page 54, by Milton S. Smith, County Surveyor, shows a stone at the West Quarter Corner of Sec. 16-102-40 and a distance of 2650.6 feet north to the Northwest Corner and a distance of 2641.5 feet south to the Southwest Corner.
- 7 May 1959 -Minnesota Highway Department, Land Tie Field Notes for I-90, SP 5380, states that a rock was found, down 1.5' and that a SRP in a 2" X 2" wood hub was placed over the rock for the East Quarter Corner of Sec. 17-102-40.
- 9 Apr. 1987 -Nobles County Recorder's Office, Document No. 230010, a Resolution by the Town Board of Worthington Township, declaring 66 foot wide easements for roads where the centerline of said easements incorporate the section lines and corners.
- 3 Oct. 2000 -MnDOT survey crew found a MnDOTcast iron monument, down 0.1' and under the Interstate 90 right of way fence and on centerline with gravel road to the north, also set new ties per sketch.

The evidence is not conclusive as to the true corner location, however the written, occupational and collateral evidence suggest that this is a reasonable location as to the corner. Additional information regarding the preparation of this certificate can be obtained by contacting: Survey Section, Minnesota Department of Transportation, 501 South Victory Drive, P.O. Box 4039, Mankato, MN 56002-4039.