

CERTIFICATE OF LOCATION OF GOVERNMENT CORNER

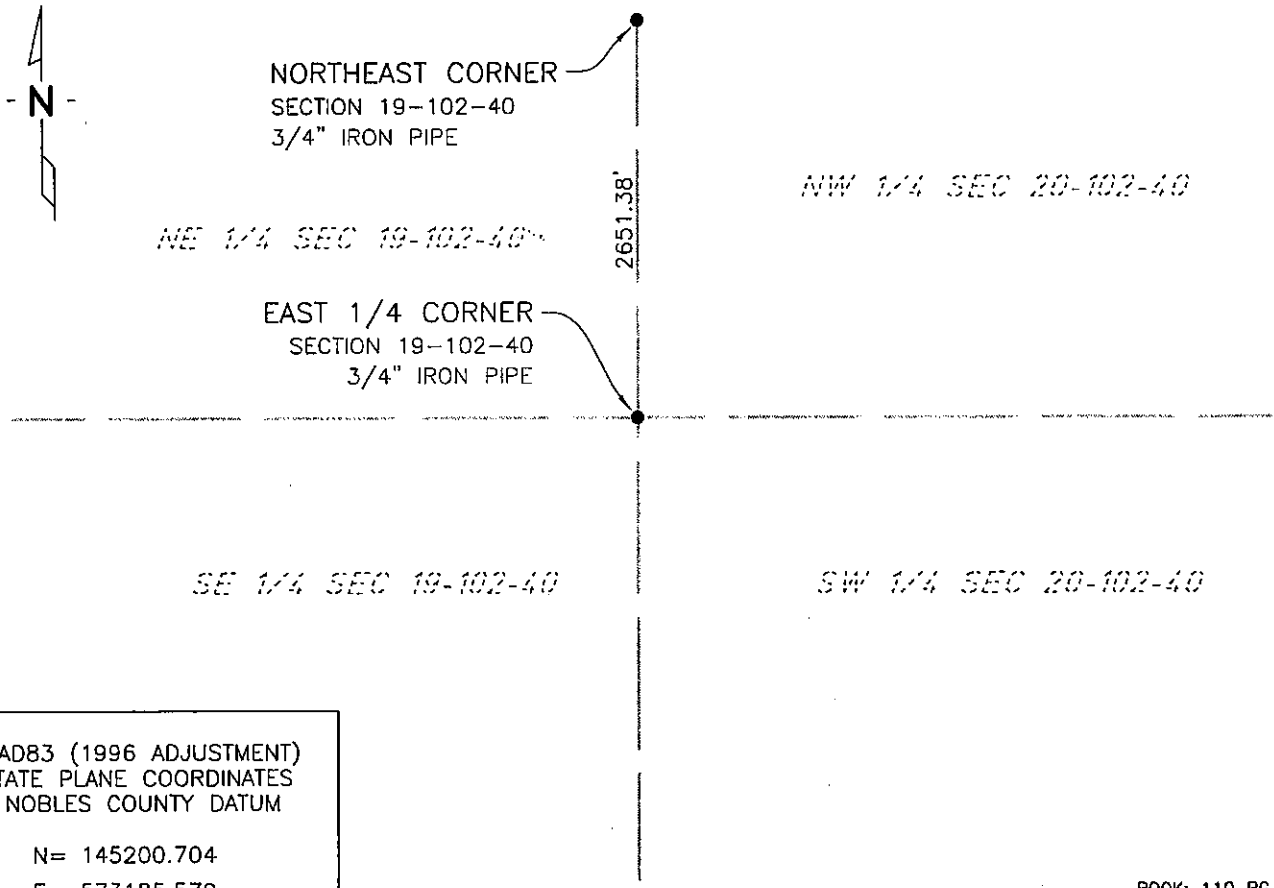
EAST QUARTER Corner of Section 19, Township 102 N, Range 40 W, 5th P.M.

STATE OF MINNESOTA, County of NOBLES

At the corner location shown on the sketch:

- On 7/15/03 found a 3/4" IRON PIPE
DATE
- left monument as found, lowered monument, removed monument (explain)
- On _____ placed a _____
DATE

SKETCH OF REFERENCE TIES



NAD83 (1996 ADJUSTMENT)
 STATE PLANE COORDINATES
 NOBLES COUNTY DATUM

N= 145200.704
 E= 573185.579

BOOK: 110 PG. 42
 F:\NOBLS\CERTIFICATES\2005\CAD\E19-102-40

Statement of evidence relative to this corner location is on back of page.

I hereby certify that this document and the data contained herein was prepared by me or under my direct supervision.

Janele Fowlds 4-24-06
JANELE FOWLDS DATE

Registration No. 26748

Land surveyor, Professional Engineer
 County Surveyor, County Engineer

OFFICE OF THE COUNTY RECORDER
 County of _____

I hereby certify that this document was filed in the Co. Recorders office at ____M. on the _____ day of _____ A.D., 19____

County Recorder _____
 By _____, Deputy

DOCUMENT NO. _____

Statement of Evidence

East Quarter Corner Section 19, Township 102 North, Range 40 West

Original Notes

- 1999 Field notes from, Madsen Land Surveying Inc., Fairmont, states they dug a 6x8x3 feet hole, found no evidence of a corner. Set a 3/4"x24" iron pipe on a straight line between Northeast and Southeast Corners, and in line with E&W fence. New ties for the corner are as follows:
- Steel Fence Post – Northwest 57.85'
 - Steel Fence Post – Northeast 62.80'
 - Bottle Cap in Cor Fence Post – West 32.40'
 - On E&W Fence line
- 2003 On July 15, Bolton & Menk, Inc., Mankato, found a 3/4" iron pipe 1.0 foot below surface.