

# CERTIFICATE OF LOCATION OF GOVERNMENT CORNER

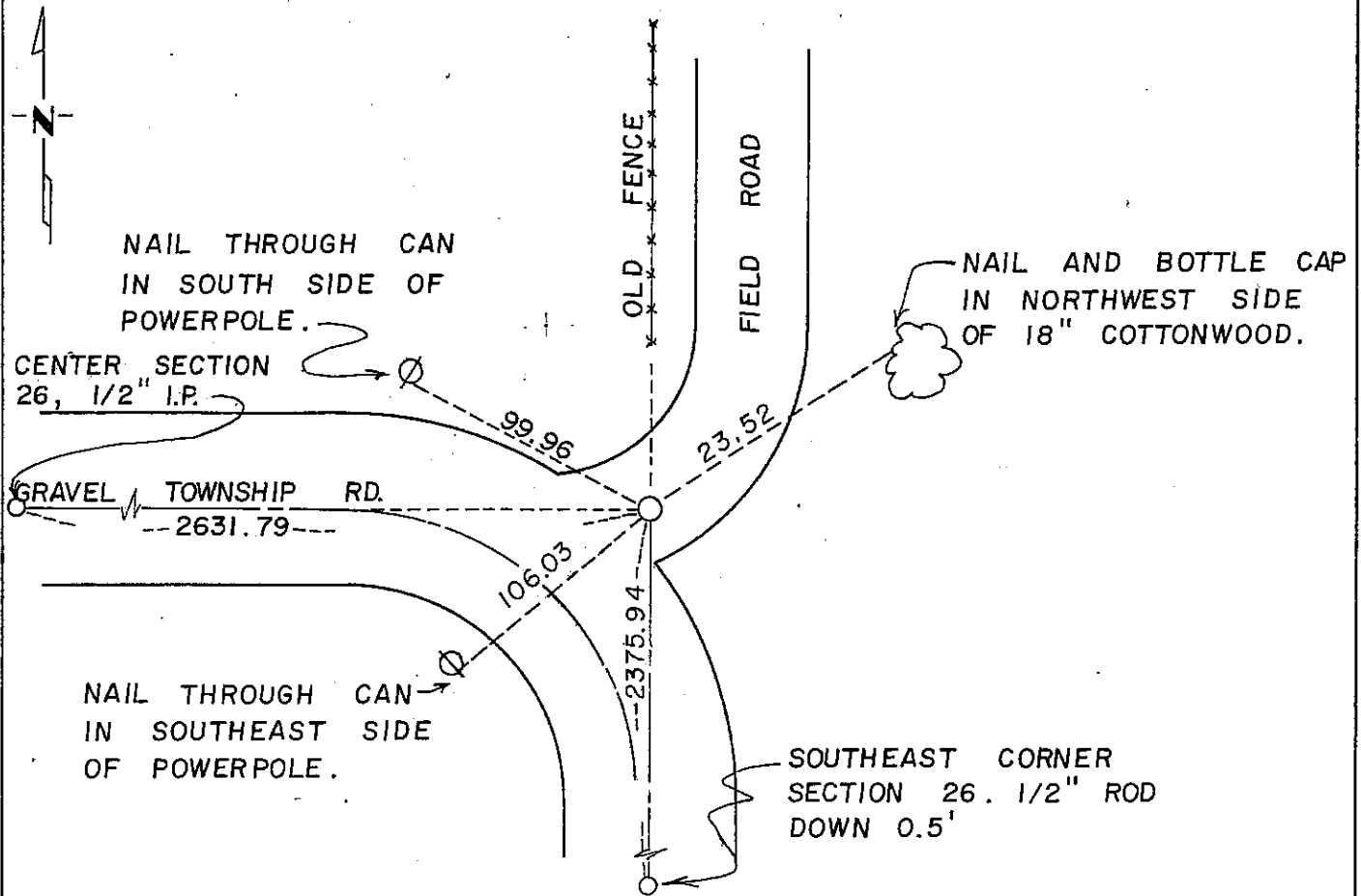
EAST QUARTER Corner of Section 26, Township 102, Range 40, 5 P.M.

STATE OF MINNESOTA, County of NOBLES

At the corner location shown on the sketch:

- On \_\_\_\_\_ found a \_\_\_\_\_
- left monument as found,  lowered monument,  removed monument (explain)
- On MAY 23, 1979 placed a 1/2" IRON PIPE FLUSH WITH CAP.

SKETCH OF REFERENCE TIES



Statement of evidence relative to this corner location is on back of page.

I hereby certify that this document and the data contained herein was prepared by me or under my direct supervision.

Timothy J. Leh Jan. 18, 1980  
SIGNATURE DATE

Registration No. 12253

- Land Surveyor,  Professional Engineer
- County Surveyor,  County Engineer

OFFICE OF THE COUNTY RECORDER

County of Nobles

I hereby certify that this document was filed in the ~~County of Nobles~~ <sup>County Recorder's</sup> office at 11:30 A.M. on the 18th day of January A.D., 1980

Joyce Lemke  
County Recorder

By \_\_\_\_\_, Deputy

DOCUMENT NO. 208018

Statement of Evidence: East Quarter Corner of Section 26, T. 102, R. 40, Nobles Co.

April 10, 1900 - Milton S. Smith, County Surveyor, writes "oak stake in mound" when he laid out a great portion of the East Half of Section 26.

June, 1914 - William A. Saxon, County Surveyor, produced an Auditor's Plat of the East Okabena Lake bed on which he shows a monument found.

May 11, 1979 - I had Merle Nienkerk out with his large back hoe. He dug a hole  $\pm$  8' square at the location down to below the original topsoil (which he believed was filled for a road about 10 years earlier). We found no evidence of the oak stake.

This location lines up with the township road West and South and with an old fence running north. Open field is to the east. I have used the same proration factor of 1.0009 times M. S. Smith's distance from the Southeast Corner to place this monument.

The current work was performed by: Hagemeister, Ebeling & Lehn, Inc.  
921 4th Avenue, Suite 14  
Worthington, MN 56187

Tract M.L. Compared Q.C.  
Photo Q.C.  
Fee M.L.C.