

CERTIFICATE OF LOCATION OF GOVERNMENT CORNER

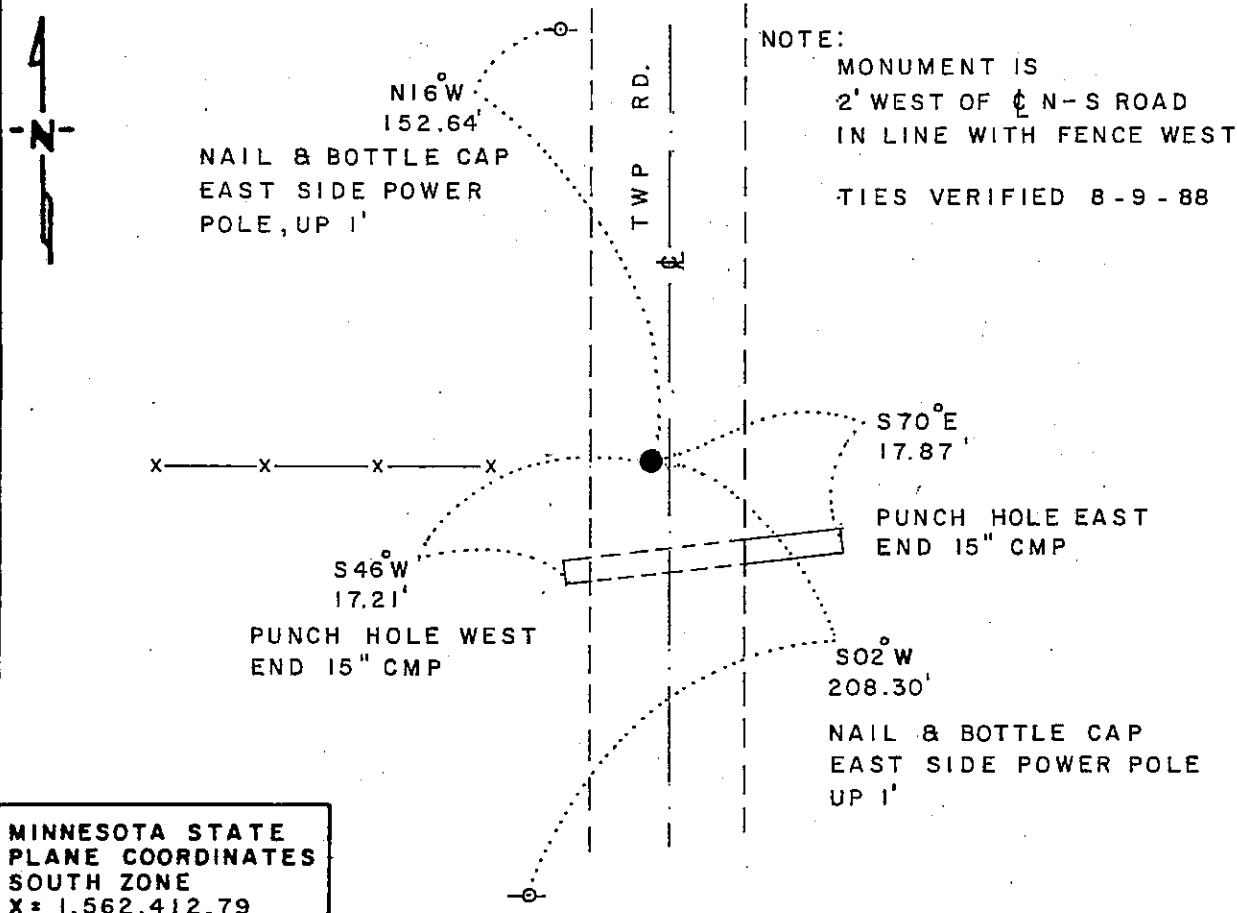
EAST QUARTER Corner of Section 8, Township 102 N, Range 40 W, 5th P.M.

STATE OF MINNESOTA, County of NOBLES

At the corner location shown on the sketch:

- On 6-25-84 found a 1" INSIDE DIAMETER 12" IRON PIPE, OVER A
12" x 14" x 8" STONE, DOWN 12"
 left monument as found, lowered monument, removed monument (explain)
- On 6-25-84 placed a 1 1/4" x 1 1/4" x 10" PERFORATED STEEL TUBE WITH
ALUMINUM CAP STAMPED "DNR SURVEY MARKER", OVER STONE, DOWN 0.5'

SKETCH OF REFERENCE TIES



NOTE:
 MONUMENT IS
 2' WEST OF ϕ N-S ROAD
 IN LINE WITH FENCE WEST
 TIES VERIFIED 8-9-88

MINNESOTA STATE
 PLANE COORDINATES
 SOUTH ZONE
 X = 1,562,412.79
 Y = 242,330.78

BEARINGS OBSERVED WITH COMPASS

Statement of evidence relative to this corner location is on back of page J.B.M. 8-29-88
G-965

I hereby certify that this document and the data contained herein was prepared by me or under my direct supervision
Lowell R. Pomeroy 9-20-88
SIGNATURE DATE
 Registration No. 17005
 Land Surveyor, Professional Engineer
 County Surveyor, County Engineer

OFFICE OF THE COUNTY RECORDER
 County of Nobles
 I hereby certify that this document was filed in the Co. Recorders office at 4:00 P.M. on the 21st day of September A.D., 1988
 County Recorder George Howard
 By _____, Deputy
 DOCUMENT NO. 234936

East Quarter Corner Section 8, Township 102 North, Range 40 West

The DNR Bureau of Engineering contacted the following offices for survey information on this corner:

MN Secretary of State
Nobles County Recorder and Highway Engineer
Mn/DOT at Windom
Martin Land Surveying at Worthington
Rieke-Carroll-Muller

1868 The U.S. General Land Office notes in the Secretary of State's Office show the corner is a post, set in a mound with pits.

No Date Surveyor's Record Book A-1, on page 58, obtained from the County Recorder's Office, contains a survey, surveyor not indicated. Survey shows a distance of 40.40 chains from this corner to the center of Section 8. No mention of a monument is made.

1901 Surveyor's Record Book A-2, on page 454, obtained from the County Recorder's Office, contains a survey by Milton S. Smith, County Surveyor. Survey shows an original mound at this corner.

1980 February, field notes and worksheet, obtained from Martin Land Surveying, shows a 1" iron pipe was found at this corner. Iron is in line with a fence west and 1 ft. west of the center line of a north-south road. Iron is shown to measure:
2639.27 ft. from the northeast corner Section 17
2646.34 ft. from the northeast corner Section 8

1984 June 25, the DNR Bureau of Engineering conducted a search for this corner and found a 1" by 12" iron pipe over a 12" by 14" by 8" stone, down 12". Left stone as found, and replaced iron pipe with a DNR Survey Marker. Corner is:
on fence line west
2 ft. west of center line north-south road
2639.29 ft. from the northeast corner Section 17
2646.20 ft. from the northeast corner Section 8

Analysis of the available information led the DNR Bureau of Engineering to conclude that the found stone and iron pipe marks the location of the corner.

1988 August, the DNR Bureau of Engineering revisited the corner and found the DNR Survey Marker as previously set in good condition.