

**UNITED STATES PUBLIC LAND SURVEY CORNER CERTIFICATE FOR**

Land survey monuments situated in Section 3, Township 102 North, Range 40 West, of the Fifth Principal Meridian, Nobles County, Minnesota..

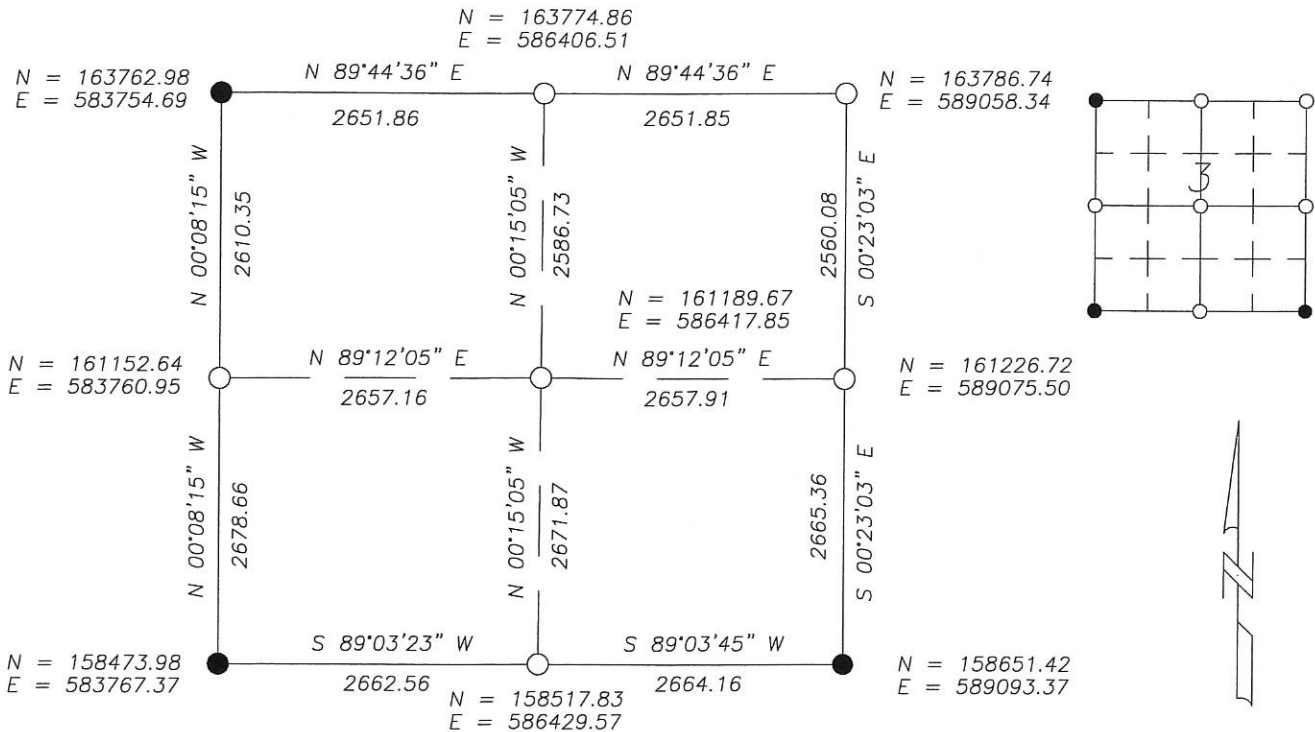
Previously recorded in N/A in County Recorder's Office.

(Show reason for preparing this certificate, the evidence and detailed procedure used in establishing the corner position & monumentation found or placed.)

MONUMENT DESCRIPTION AND REMARKS: On October 1, 2007 we dug with backhoe for North 1/4 Corner, Northeast Corner, East 1/4 Corner, South 1/4 Corner & West 1/4 Corner. At NE Corner we found a wood stake 1' below surface and nothing below wood stake. Nobles County indicated a stake in 1935. I accepted wood stake as corner & set a 1" Iron Pipe with survey cap at wood stake location. We found a 10" X 10" stone at South 1/4 Corner 1.8' below surface. County records indicated stone in 1916. Accepted stone as corner & set 1" Iron Pipe with survey cap 23008 over top center of stone. Found no evidence at North 1/4 Corner, East 1/4 Corner & West 1/4 Corner. Set 1" Iron Pipe with survey cap 23008 at North 1/4 Corner midway & on line between NW & NE Corners as per PLS Instructions. Set 1" Iron Pipe with cap 23008 at East 1/4 Corner on line between NE & SE Corners and at proportional distance from Township Plat. Set 1" Iron Pipe with survey cap at West 1/4 Corner on line between NW & SW Corners and at proportional distance from Township Plat. Nobles County records indicated nothing at East 1/4 Corner for West 1/4 Corner indicated a stone in 1894 and 1916 but we did not find.

NOBLES COUNTY COORDINATES NAD 83 (1996)

**PLAN-VIEW**



I hereby certify that this land surveying document was prepared and related survey work was performed by me or under my direct supervision and that I am a duly licensed Land Surveyor under the laws of the State of Minnesota.

*Perry L. Zieske* 10-9-07  
Signature Date  
Perry Zieske  
License number 23008

Corners to be Indexed

Corners	Section	Township	Range
N 1/4	3	102	40
NE	3	102	40
E 1/4	3	102	40
S 1/4	3	102	40
W 1/4	3	102	40
CTR.	3	102	40