

CERTIFICATE OF LOCATION OF GOVERNMENT CORNER

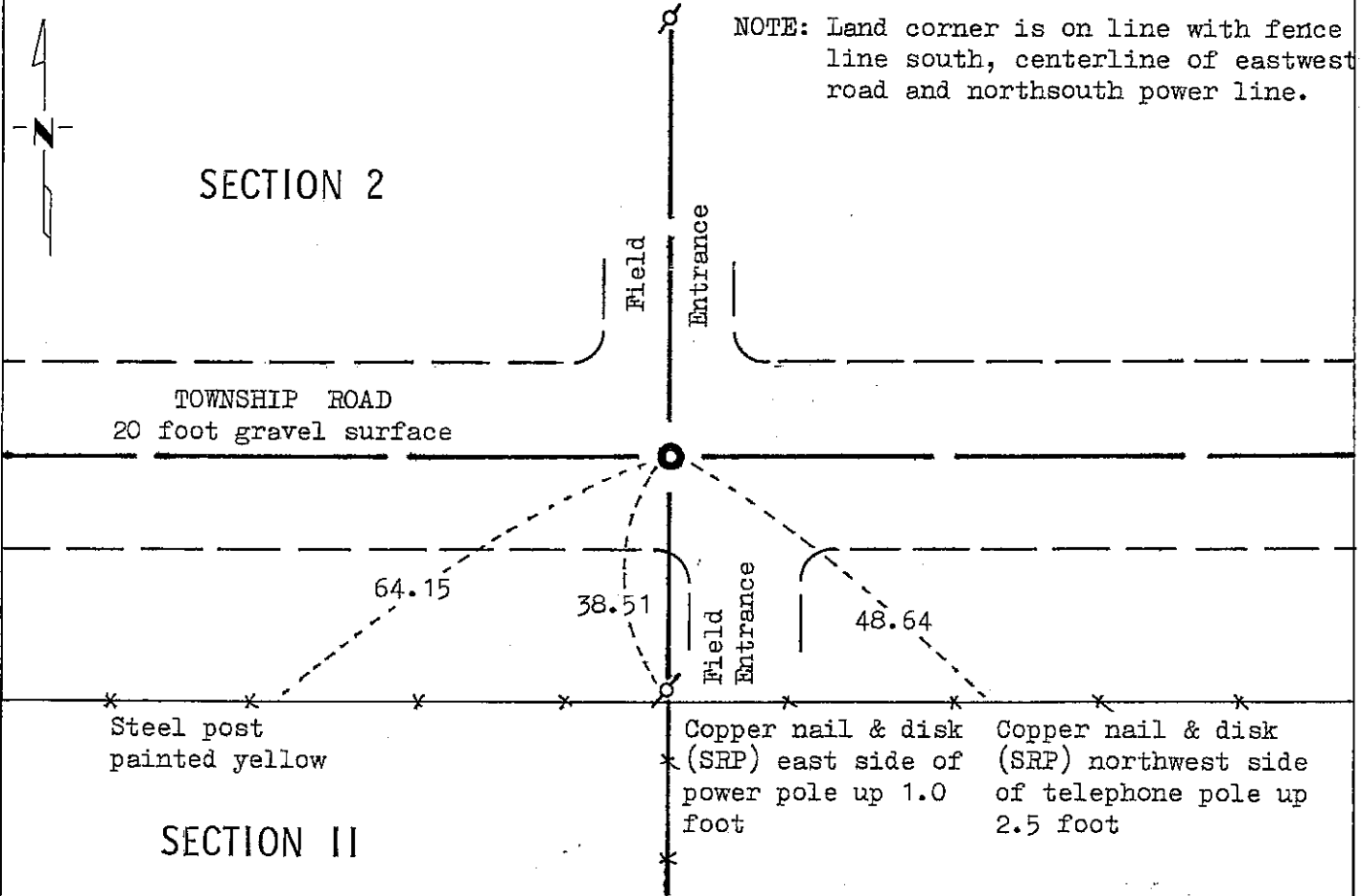
NORTH QUARTER Corner of Section 11, Township 102N, Range 40, 5 P.M.

STATE OF MINNESOTA, County of NOBLES

At the corner location shown on the sketch:

- On Nov. 5, 1981 found a 12 inch by 12 inch by 18 inch stone down 2.0 foot in
DATE
natural soil
 - left monument as found, lowered monument, removed monument (explain)
- On Nov. 5, 1981 placed a M.H.D. cast iron monument down 0.6 foot directly over
DATE
stone. "+" in cast iron monument.

SKETCH OF REFERENCE TIES



Statement of evidence relative to this corner location is on back of page.

I hereby certify that this document and the data contained herein was prepared by me or under my direct supervision.

Allan E. Schoon 10-15-92
SIGNATURE DATE

Registration No. 11858

- Land Surveyor, Professional Engineer
- County Surveyor, County Engineer

OFFICE OF THE COUNTY RECORDER

County of Nobles

I hereby certify that this document was filed in the Co. Recorders office at 9:15 A.M. on the 21st day of October A.D., 1992

County Recorder James Howard

By _____, Deputy

DOCUMENT NO. 249758

Statement of Evidence: North Quarter of Section 11, T102N, R40W, 5th P.M.

- Sept. 25, 1868 The original Government Survey of the Township Subdivision by Deputy Surveyor George G. Howe was run in 1868 and his notes read, "Set post in mound with pits for $\frac{1}{4}$ Sec. Corner".
- Aug. 18, 1891 Milton S. Smith, Nobles County Surveyor, found the "Original $\frac{1}{4}$ post mound & pits" at the south quarter of Section 2. Measurement is 2640 feet to center of Section 2.
- Oct. 17, 1903 M.S. Smith, Nobles County Surveyor, notes read "Stone" at mid point between section corner stones 2648.8 feet east and 2648.8 feet west. It is 5266.7 to north $\frac{1}{4}$ of Section 12.
- 1935 Nobles County Highway records indicate "Stone".
- Nov. 5, 1981 Minnesota Department of Transportation field survey crew using a tractor backhoe found a stone 12 inches by 12 inches by 18 inches down 24 inches and into natural soil, used center of flat top for corner location. Placed Minnesota Highway Department Cast Iron Monument directly over the stone and down $\frac{1}{2}$ foot below the gravel surface.
- An analysis of the Statement of Evidence and the field measurements indicate that the in place location of the Cast Iron Monument provides a continuous chain of perpetuation of the original Public Land Survey corner.
- For additional information, including field measurements and photographs, contact the Minnesota Department of Transportation in Windom.
- Dec. 12, 1991 Al Schafer, with the Minnesota Department of Transportation, and crew found the Cast Iron Monument and reference ties.