

# CERTIFICATE OF LOCATION OF GOVERNMENT CORNER

NORTH QUARTER Corner of Section 15, Township 102 N, Range 40 W, 5th P.M.

STATE OF MINNESOTA, County of NOBLES

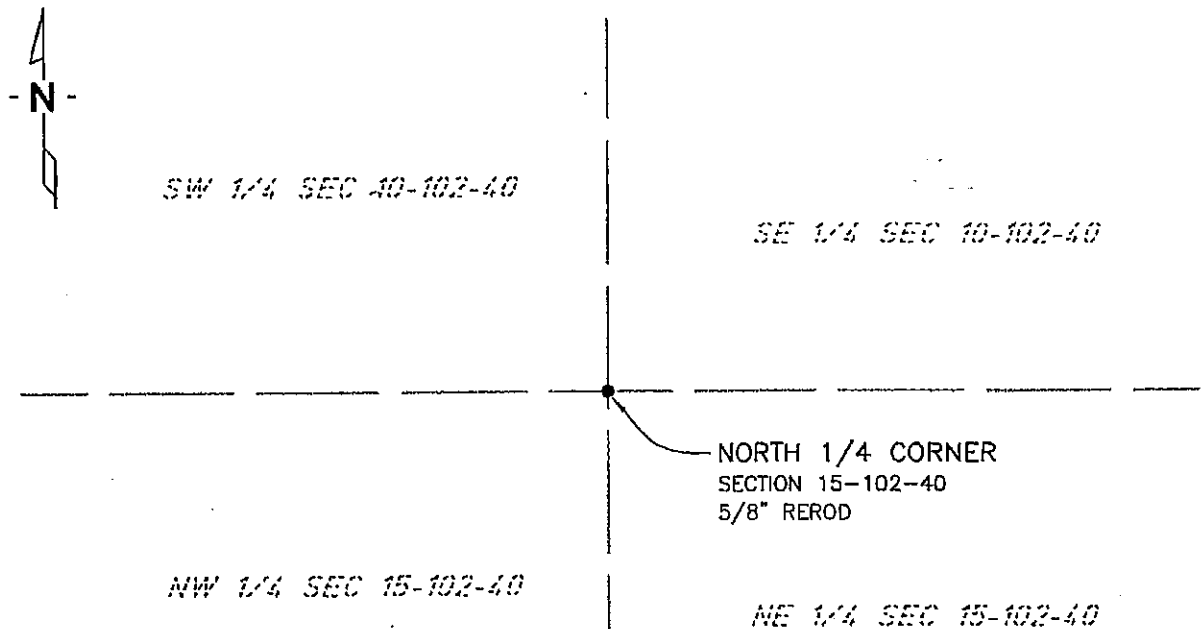
At the corner location shown on the sketch:

On 7/16/03 found a 5/8" REROD  
DATE

left monument as found,  lowered monument,  removed monument (explain)

On \_\_\_\_\_ placed a \_\_\_\_\_  
DATE

### SKETCH OF REFERENCE TIES



NAD83 (1996 ADJUSTMENT)  
 STATE PLANE COORDINATES  
 NOBLES COUNTY DATUM

N= 153218.950  
 E= 586430.474

BOOK: 110 PG. 43  
 I:\NOBLS\CERTIFICATES\2005\CAD\N15-102-40

Statement of evidence relative to this corner location is on back of page.

I hereby certify that this document and the data contained herein was prepared by me or under my direct supervision.

Janele Fowlds 4-24-06  
JANELE FOWLDS DATE

Registration No. 26748

- Land surveyor,  Professional Engineer  
 County Surveyor,  County Engineer

#### OFFICE OF THE COUNTY RECORDER

County of \_\_\_\_\_

I hereby certify that this document was filed in the Co. Recorders office at \_\_\_\_M. on the \_\_\_\_\_ day of \_\_\_\_\_ A.D., 19\_\_

County Recorder \_\_\_\_\_

By \_\_\_\_\_, Deputy

DOCUMENT NO. \_\_\_\_\_

Statement of Evidence

North Quarter Corner Section 15, Township 102 North, Range 40 West

Original Notes

- 1894 Nobles County Highway Department records show a stone monument being set.
- 1940 Nobles County Highway Department records show a stone monument.
- 1959 Nobles County Highway Department records show a stone monument, and also placed an iron pin, has the following ties:  
FE Post – Southwest 44.70'  
FE Post – Southeast 32.62'  
Steel FE Post – North 33.08'
- 1983 Field notes from Martin Land Surveying, Worthington, shows a 5/8" iron bar found in the centerline of E&W road and in line with fence N&S.
- 1992 Nobles County Highway Department records show a 3/4" iron pin being found by Madsen Land Surveying Inc., Fairmont, with the following ties:  
S. Edge STL Cor Post – North 34.00'  
SRP in Power Pole – Southwest 134.15'  
Cor Post – South-Southeast 31.65'
- 2003 On July 16, Bolton & Menk, Inc., Mankato, found a 5/8" rerod 0.5 foot below surface of a township road.

The evidence is not conclusive as to the true corner location, however the occupational and collateral evidence suggest that this is a reasonable location as to the corner. Additional information regarding the preparation of this certificate can be obtained by contacting: Bolton & Menk, Inc., Mankato, MN.