

# CERTIFICATE OF LOCATION OF GOVERNMENT CORNER

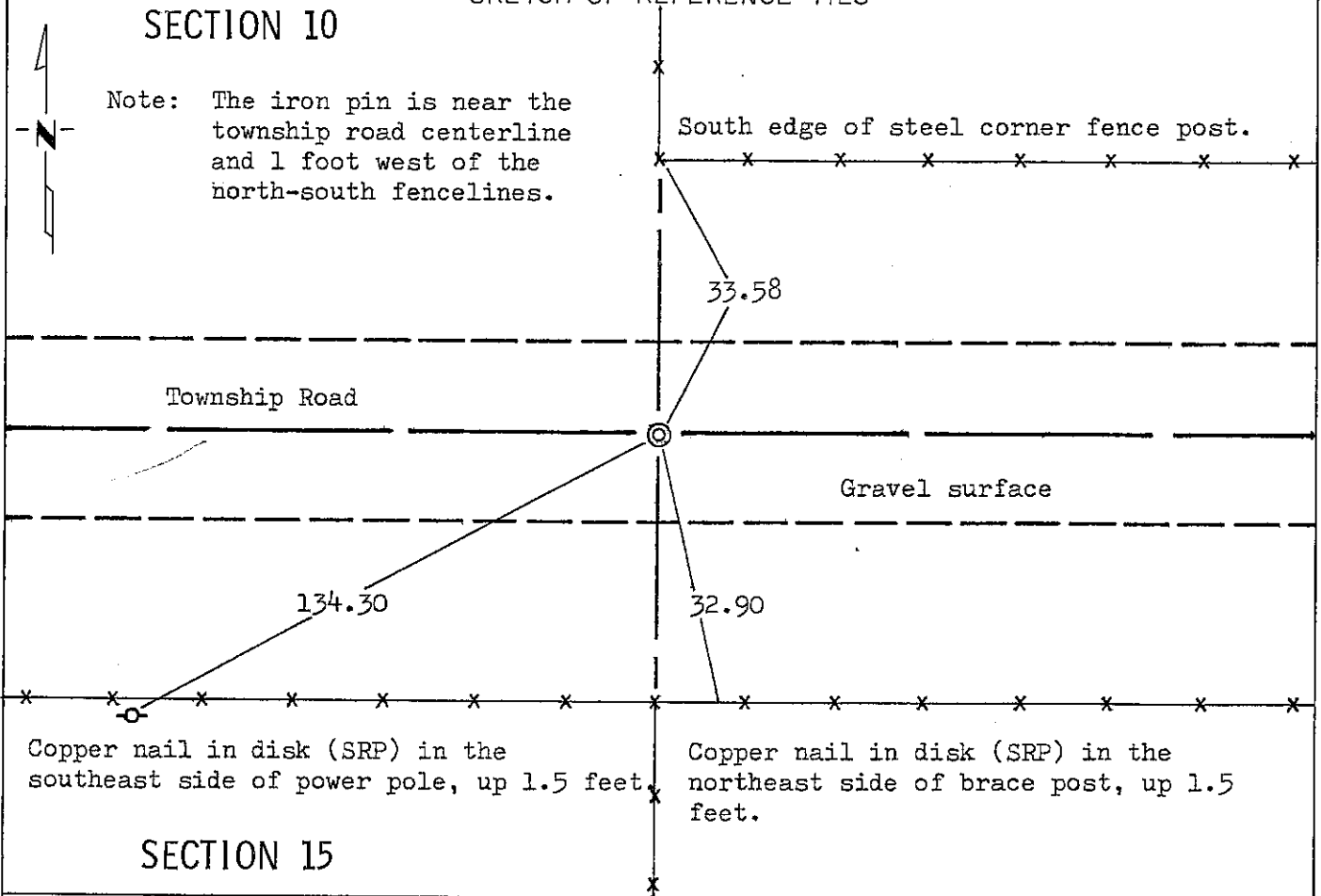
NORTH QUARTER Corner of Section 15, Township 102N, Range 40W, 5 P.M.

STATE OF MINNESOTA, County of NOBLES

At the corner location shown on the sketch:

- On May 22, 1978 found a 3/4 inch iron pin, down 0.4 feet, over the point of a 6 inch by 12 inch by 18 inch field stone, down 2.0 feet, over a wooden stake.
  - left monument as found,  lowered monument,  removed monument (explain)
- On \_\_\_\_\_ placed a \_\_\_\_\_

## SKETCH OF REFERENCE TIES



Statement of evidence relative to this corner location is on back of page.

I hereby certify that this document and the data contained herein was prepared by me or under my direct supervision.

S. Eldon Lober Sept. 13, 1978  
SIGNATURE DATE

Registration No. 11933

- Land Surveyor,  Professional Engineer
- County Surveyor,  County Engineer

## OFFICE OF THE COUNTY RECORDER

County of Nobles

I hereby certify that this document was filed in the Co. Recorders office at 11:05 A.M. on the 15th day of September A.D., 19 78

County Recorder Joyce Lamba  
By \_\_\_\_\_, Deputy

DOCUMENT NO. 203809

Statement of Evidence:N $\frac{1}{4}$  Sec. 15 T102N R40W Nobles

September 25, 1868 - G. G. Howe - The original Public Land Surveyor's notes read:  
"Set post in mound with pits for  $\frac{1}{4}$  section corner".

April 30, 1894 - Milton S. Smith - County Surveyor, "original stake in mound -  
set stone".

1894 - Notes from Nobles County Highway Department read: "Stone in 1894 set".

1940 - Notes from Nobles County Highway Department read: "Stone in 1940".

1959 - Notes from Nobles County Highway Department read: "Stone in 1959 Placed  
Iron Pin".

Circa 1959 - Anonymous - Minnesota Highway Department's Survey Crew - "Found Field  
Rock" down 3.0' Pl.  $\frac{3}{4}$  I.P. down 0.3'.

February 22, 1978 - Foster, Stoeckman and Verdoorn of the Minnesota Department of  
Transportation used notes from Location Survey S.P. 5380-01. Found  $\frac{3}{4}$  inch  
iron pin as described.

March 28, 1978 - David Raley of the Minnesota Department of Transportation con-  
tacted James Kramer and Lloyd Standafer about this land corner. Neither knew  
anything about the land corner, nor of any surveys or property disputes in the  
area. They both consider the N-S fence as the property line. They have lived  
in the area for the past 12 years.

An analysis of the Statement of Evidence and the field measurements indicate that  
the in-place location of the iron pin, field stone, and wooden stake provides a  
continuous chain of perpetuation of the original Public Land Survey corner.

For addition information, including field measurements and photographs, contact the  
Minnesota Department of Transportation in Windom.